

Datasheet for 600-401-AU8**DELE Antibody****Overview**

Description:	Anti-DELE (RABBIT) Antibody - 600-401-AU8
Item No.:	600-401-AU8
Size:	100 µg
Applications:	ELISA, IF, WB
Reactivity:	Human, Rat
Host Species:	Rabbit

Product Details

Background:	DELE is a recently identified DAP3-binding protein that is thought to be important in the induction of death receptor-mediated apoptosis. Transfected cells that stably express DELE were found to be susceptible to apoptosis induction by TNF- α and TRAIL, whereas reducing DELE expression by siRNA rescued these cells from apoptosis induction. Furthermore, the reduction of DELE expression also inhibited the activation of caspase-3, caspase-8 and caspase-9 following stimulation by TNF- α , anti-Fas, or TRAIL, indicating the importance of DELE in apoptosis mediated by death receptors.
Synonyms:	DELE Antibody, Death ligand signal enhancer, DAP3-binding cell death enhancer 1, KIAA0141, DELE1
Host Species:	Rabbit
Clonality:	Polyclonal
Format:	IgG

Target Details

Gene Name:	DELE1
Reactivity:	Human, Rat
Immunogen Type:	Conjugated Peptide
Immunogen:	Anti-DELE antibody was prepared from whole rabbit serum produced by repeated immunizations with an 18 amino acid synthetic peptide near the N-terminus of human DELE.

Purity/Specificity: Anti-DELE Antibody was affinity purified from monospecific antiserum by immunoaffinity chromatography. Cross reactivity with DELE from other sources has not been determined.

Relevant Links:

- [UniProtKB - Q14154](#)
- [GeneID - 9812](#)
- [NCBI - NP_055588](#)

Application Details

Tested Applications: ELISA, IF, WB

Application Note: Anti-DELE Antibody has been tested for use in ELISA, Western Blotting and Immunofluorescence. Specific conditions for reactivity should be optimized by the end user. Expect a band at approximately 56 kDa in Western Blots of specific cell lysates and tissues.

Assay Dilutions: All assays should be optimized by the user. Recommended dilutions (if any) may be listed below.

ELISA: 1:10,000

IF: 20 µg/mL

WB: 1 µg/mL

Formulation

Physical State: Liquid (sterile filtered)

Concentration: 1 mg/mL by UV absorbance at 280 nm

Buffer: 0.01 M Sodium Phosphate, 0.25 M Sodium Chloride, pH 7.2

Preservative: 0.02% (w/v) Sodium Azide

Stabilizer: None

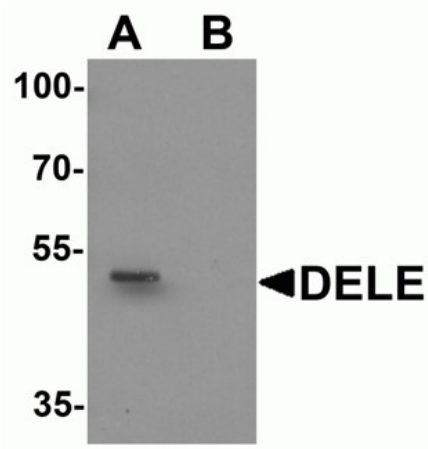
Shipping & Handling

Shipping Condition: Wet Ice

Storage Condition: Antibody can be stored at 4°C up to one year. Antibodies should not be exposed to prolonged high temperatures.

Expiration: Expiration date is one (1) year from date of receipt.

Images

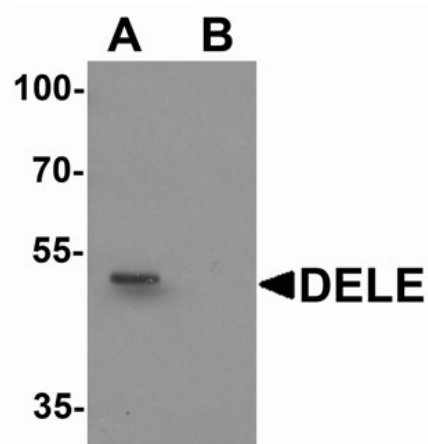


Immunofluorescence Microscopy

Immunofluorescence of DELE.

Tissue: human brain tissue.

Primary Antibody: DELE antibody at 20 µg/mL.



Immunofluorescence Microscopy

Immunofluorescence of DELE.

Tissue: human brain tissue.

Primary Antibody: DELE antibody at 20 µg/mL.

Disclaimer

This product is for research use only and is not intended for therapeutic or diagnostic applications. Please contact a technical service representative for more information. All products of animal origin manufactured by Rockland Immunochemicals are derived from starting materials of North American origin. Collection was performed in United States Department of Agriculture (USDA) inspected facilities and all materials have been inspected and certified to be free of disease and suitable for exportation. All properties listed are typical characteristics and are not specifications. All suggestions and data are offered in good faith but without guarantee as conditions and methods of use of our products are beyond our control. All claims must be made within 30 days following the date of delivery. The prospective user must determine the suitability of our materials before adopting them on a commercial scale. Suggested uses of our products are not recommendations to use our products in violation of any patent or as a license under any patent of Rockland Immunochemicals, Inc. If you require a commercial license to use this material and do not have one, then return this material, unopened to: Rockland Inc., P.O. BOX 5199, Limerick, Pennsylvania, USA.