

**Datasheet for 600-401-AU2****DDC Antibody****Overview**

<b>Description:</b>	Anti-DDC (RABBIT) Antibody - 600-401-AU2
<b>Item No.:</b>	600-401-AU2
<b>Size:</b>	100 µg
<b>Applications:</b>	ELISA, IF, IHC, WB
<b>Reactivity:</b>	Human, Mouse, Rat
<b>Host Species:</b>	Rabbit

**Product Details**

<b>Background:</b>	DOPA decarboxylase (DDC) belongs to the group II decarboxylase family of proteins (1). It is an important protein in the catecholamine biosynthesis pathway. DDC catalyzes the second reaction in the biosynthesis of catecholamines, trace amines and serotonin (1,2). It can form a homodimer and is expressed in the central nervous system (2). DDC can be used as markers for dopaminergic, noradrenergic and serotonergic neurons in a variety of applications including depression, schizophrenia, Parkinson's disease, neuroendocrine tumors and drug abuse (3,4). Defects in DDC gene may cause the autosomal recessive disorder AADC deficiency (4).
<b>Synonyms:</b>	DDC Antibody , AADC, AADC, Aromatic-L-amino-acid decarboxylase, DOPA decarboxylase
<b>Host Species:</b>	Rabbit
<b>Clonality:</b>	Polyclonal
<b>Format:</b>	IgG

**Target Details**

<b>Gene Name:</b>	DDC
<b>Reactivity:</b>	Human, Mouse, Rat
<b>Immunogen Type:</b>	Conjugated Peptide
<b>Immunogen:</b>	Anti-DDC antibody was prepared from whole rabbit serum produced by repeated immunizations with a 14 amino acid peptide near the C-terminus of human DDC

**Purity/Specificity:** Anti-DDC Antibody was affinity purified from monospecific antiserum by immunoaffinity chromatography. DDC antibody is human, mouse and rat reactive.

**Relevant Links:**

- [UniProtKB - P20711](#)
- [GeneID - 1644](#)
- [NCBI - NP\\_000781](#)

## Application Details

**Tested Applications:** ELISA, IF, IHC, WB

**Application Note:** Anti-DDC Antibody has been tested for use in ELISA, Western Blotting, Immunohistochemistry and Immunofluorescence. Specific conditions for reactivity should be optimized by the end user. Expect a band at approximately 54 kDa in Western Blots of specific cell lysates and tissues.

**Assay Dilutions:** All assays should be optimized by the user. Recommended dilutions (if any) may be listed below.

**ELISA:** User Optimized

**IF:** User Optimized

**IHC:** User Optimized

**WB:** User Optimized

## Formulation

**Physical State:** Liquid (sterile filtered)

**Concentration:** 1.0 mg/mL by UV absorbance at 280 nm

**Buffer:** 0.01 M Sodium Phosphate, 0.25 M Sodium Chloride, pH 7.2

**Preservative:** 0.02% (w/v) Sodium Azide

**Stabilizer:** None

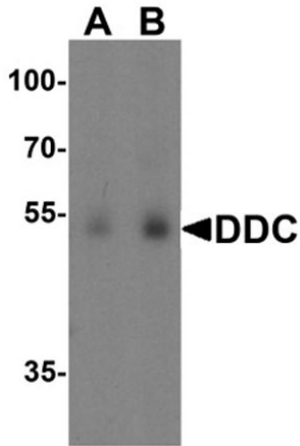
## Shipping & Handling

**Shipping Condition:** Dry Ice

**Storage Condition:** Store vial at -20° C prior to opening. Aliquot contents and freeze at -20° C or below for extended storage. Avoid cycles of freezing and thawing. Centrifuge product if not completely clear after standing at room temperature. This product is stable for several weeks at 4° C as an undiluted liquid. Dilute only prior to immediate use.

**Expiration:** Expiration date is one (1) year from date of receipt.

## Images

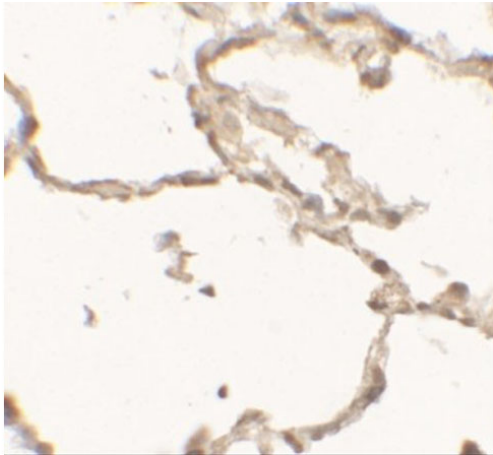


### Western Blot

Western blot of DDC.

Load: human lung tissue lysate.

Primary Antibody: DDC antibody at (A) 0.5 and (B) 1  $\mu\text{g/ml}$ .

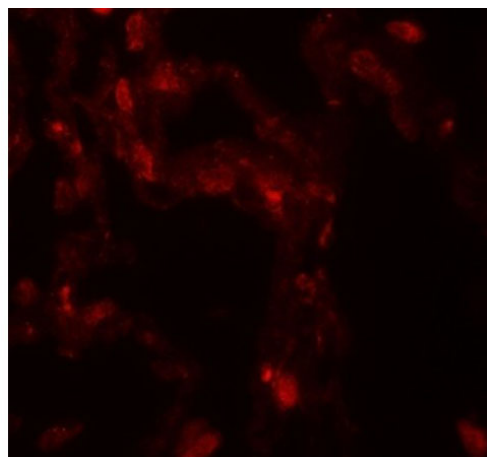


### Immunohistochemistry

Immunohistochemistry of DDC.

Tissue: human lung tissue.

Primary Antibody: DDC antibody at 2.5  $\mu\text{g/mL}$ .

**Immunofluorescence Microscopy**

Immunofluorescence of DDC.

Tissue: human lung tissue.

Primary Antibody: DDC antibody at 20 µg/mL.

**Disclaimer**

This product is for research use only and is not intended for therapeutic or diagnostic applications. Please contact a technical service representative for more information. All products of animal origin manufactured by Rockland Immunochemicals are derived from starting materials of North American origin. Collection was performed in United States Department of Agriculture (USDA) inspected facilities and all materials have been inspected and certified to be free of disease and suitable for exportation. All properties listed are typical characteristics and are not specifications. All suggestions and data are offered in good faith but without guarantee as conditions and methods of use of our products are beyond our control. All claims must be made within 30 days following the date of delivery. The prospective user must determine the suitability of our materials before adopting them on a commercial scale. Suggested uses of our products are not recommendations to use our products in violation of any patent or as a license under any patent of Rockland Immunochemicals, Inc. If you require a commercial license to use this material and do not have one, then return this material, unopened to: Rockland Inc., P.O. BOX 5199, Limerick, Pennsylvania, USA.