

Datasheet for 600-401-AU1**DDA Antibody****Overview**

Description:	Anti-DDA (RABBIT) Antibody - 600-401-AU1
Item No.:	600-401-AU1
Size:	100 µg
Applications:	ELISA, IF, IHC, WB
Reactivity:	Human, Mouse, Rat
Host Species:	Rabbit

Product Details

Background:	DDA1 (DET1 and DDB1 associated 1), along with DET1 and DDB1 and a member of the UBE2E group of canonical ubiquitin-conjugating enzymes, comprise DDD-E2 complexes, which interact with multiple ubiquitin E3 ligases. One of these E3 ligases is Cul4-containing E3 ligase complex CRL4. Cells depleted of DDA1 spontaneously accumulate double-stranded DNA breaks in a similar fashion as Cul4A-, Cul4B-, or WDR23-depleted cells, suggesting that DDA1 interacts with the CRL4 complex and may be involved in the ubiquitination and subsequent proteasomal degradation of target proteins.
Synonyms:	DDA Antibody, PCIA1, C19orf58, PCIA1, DET1- and DDB1-associated protein 1, Placenta cross-immune reaction antigen 1, PCIA-1
Host Species:	Rabbit
Clonality:	Polyclonal
Format:	IgG

Target Details

Gene Name:	DDA1
Reactivity:	Human, Mouse, Rat
Immunogen Type:	Conjugated Peptide
Immunogen:	Anti-DDA1 antibody was prepared from whole rabbit serum produced by repeated immunizations with an 18 amino acid synthetic peptide near the C-terminus of human DDA1.

Purity/Specificity: Anti-DDA Antibody was affinity purified from monospecific antiserum by immunoaffinity chromatography. Cross reactivity with DDA from other sources has not been determined.

Relevant Links:

- [UniProtKB - Q9BW61](#)
- [GeneID - 79016](#)
- [NCBI - NP_003253](#)

Application Details

Tested Applications: ELISA, IF, IHC, WB

Application Note: Anti-DDA Antibody has been tested for use in ELISA, Western Blotting, Immunohistochemistry and Immunofluorescence. Specific conditions for reactivity should be optimized by the end user. Expect a band at approximately 12 kDa in Western Blots of specific cell lysates and tissues.

Assay Dilutions: All assays should be optimized by the user. Recommended dilutions (if any) may be listed below.

ELISA: 1:10,000

IF: 20 µg/mL

IHC: 5 µg/mL

WB: 1 µg/mL

Formulation

Physical State: Liquid (sterile filtered)

Concentration: 1 mg/mL by UV absorbance at 280 nm

Buffer: 0.01 M Sodium Phosphate, 0.25 M Sodium Chloride, pH 7.2

Preservative: 0.02% (w/v) Sodium Azide

Stabilizer: None

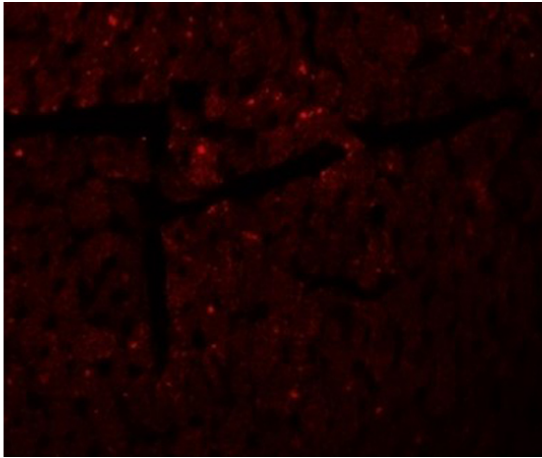
Shipping & Handling

Shipping Condition: Dry Ice

Storage Condition: Store vial at -20° C prior to opening. Aliquot contents and freeze at -20° C or below for extended storage. Avoid cycles of freezing and thawing. Centrifuge product if not completely clear after standing at room temperature. This product is stable for several weeks at 4° C as an undiluted liquid. Dilute only prior to immediate use.

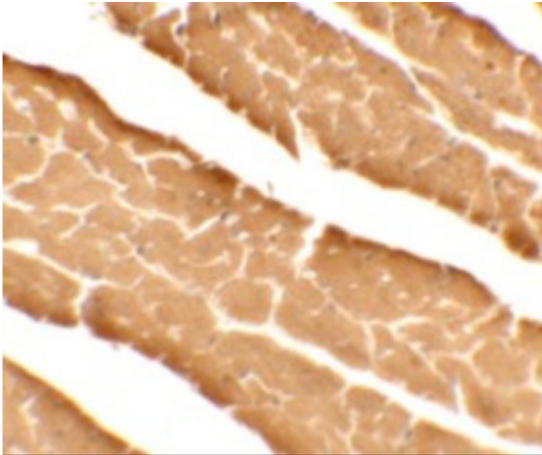
Expiration: Expiration date is one (1) year from date of receipt.

Images



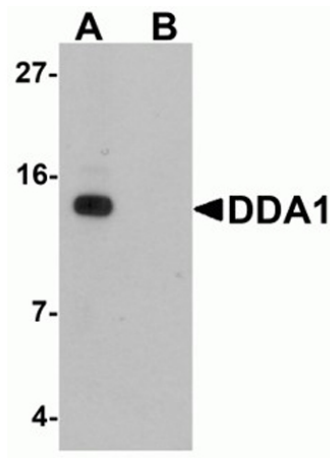
Immunofluorescence Microscopy

Immunofluorescence of DDA1. Tissue: mouse heart tissue.
Primary Antibody: DDA1 antibody at 20 $\mu\text{g}/\text{mL}$.



Immunohistochemistry

Immunohistochemistry of DDA1. Tissue: mouse heart tissue.
Primary Antibody: DDA1 antibody at 5 $\mu\text{g}/\text{mL}$.

**Western Blot**

Western blot analysis of DDA1.

Load: mouse heart tissue lysate.

Primary Antibody: DDA1 antibody at 1 $\mu\text{g}/\text{mL}$ in (A) the absence and (B) the presence of blocking peptide.

Disclaimer

This product is for research use only and is not intended for therapeutic or diagnostic applications. Please contact a technical service representative for more information. All products of animal origin manufactured by Rockland Immunochemicals are derived from starting materials of North American origin. Collection was performed in United States Department of Agriculture (USDA) inspected facilities and all materials have been inspected and certified to be free of disease and suitable for exportation. All properties listed are typical characteristics and are not specifications. All suggestions and data are offered in good faith but without guarantee as conditions and methods of use of our products are beyond our control. All claims must be made within 30 days following the date of delivery. The prospective user must determine the suitability of our materials before adopting them on a commercial scale. Suggested uses of our products are not recommendations to use our products in violation of any patent or as a license under any patent of Rockland Immunochemicals, Inc. If you require a commercial license to use this material and do not have one, then return this material, unopened to: Rockland Inc., P.O. BOX 5199, Limerick, Pennsylvania, USA.