

**Datasheet for 600-401-AS0****Dact2 Antibody****Overview**

<b>Description:</b>	Anti-Dact2 (RABBIT) Antibody - 600-401-AS0
<b>Item No.:</b>	600-401-AS0
<b>Size:</b>	100 µg
<b>Applications:</b>	ELISA, IF, IHC, WB
<b>Reactivity:</b>	Human, Mouse, Rat
<b>Host Species:</b>	Rabbit

**Product Details**

<b>Background:</b>	The Wnt signaling cascade is a conserved process in multicellular animals that plays important roles during development and can contribute to cancer and other diseases. Many members of this pathway are also expressed in the postnatal tissues such as brain. One such protein is Dact2, a member of the Dact protein family that was initially identified through binding to Disheveled (Dvl), a cytoplasmic protein essential to Wnt signaling. Dact2 is most prominent during the development of the thymus kidneys, and salivary gland. Dact2 is thought to play a role distinct from that of Dact1 with Dact2 having a greater impact on a beta-catenin-independent process termed planar cell polarity/convergent-extension signaling. Furthermore, Dact2 but not Dact1 can inhibit Nodal signaling by promoting the endocytic degradation of TGF-beta receptors. At least two isoforms of Dact2 are known to exist.
<b>Synonyms:</b>	Dact2 Antibody, DPR2, DAPPER2, C6orf116, bA503C24.7, PP13671, Dapper homolog 2, Dapper antagonist of catenin 2
<b>Host Species:</b>	Rabbit
<b>Clonality:</b>	Polyclonal
<b>Format:</b>	IgG

**Target Details**

<b>Gene Name:</b>	DACT2
<b>Reactivity:</b>	Human, Mouse, Rat
<b>Immunogen Type:</b>	Conjugated Peptide

<b>Immunogen:</b>	Anti-Dact2 antibody was prepared from whole rabbit serum produced by repeated immunizations with a 12 amino acid synthetic peptide from near the N-terminus of human DACT2.
<b>Purity/Specificity:</b>	Anti-Dact2 Antibody was affinity purified from monospecific antiserum by immunoaffinity chromatography. Cross reactivity with Dact2 from other sources has not been determined.
<b>Relevant Links:</b>	<ul style="list-style-type: none"><li>• <a href="#">UniProtKB - Q5SW24</a></li><li>• <a href="#">GeneID - 168002</a></li><li>• <a href="#">NCBI - NP_999627</a></li></ul>

## Application Details

<b>Tested Applications:</b>	ELISA, IF, IHC, WB
<b>Application Note:</b>	Anti-Dact2 Antibody has been tested for use in ELISA, Western Blotting, Immunohistochemistry and Immunofluorescence. Specific conditions for reactivity should be optimized by the end user. Expect a band at approximately 83 kDa in Western Blots of specific cell lysates and tissues.
<b>Assay Dilutions:</b>	All assays should be optimized by the user. Recommended dilutions (if any) may be listed below.
<b>ELISA:</b>	1:10,000
<b>IF:</b>	20 µg/mL
<b>IHC:</b>	2.5 µg/mL
<b>WB:</b>	1 µg/mL

## Formulation

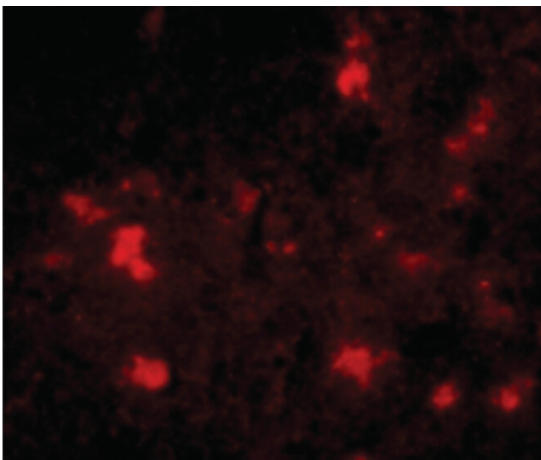
<b>Physical State:</b>	Liquid (sterile filtered)
<b>Concentration:</b>	1 mg/mL by UV absorbance at 280 nm
<b>Buffer:</b>	0.01 M Sodium Phosphate, 0.25 M Sodium Chloride, pH 7.2
<b>Preservative:</b>	0.02% (w/v) Sodium Azide
<b>Stabilizer:</b>	None

## Shipping & Handling

<b>Shipping Condition:</b>	Dry Ice
----------------------------	---------

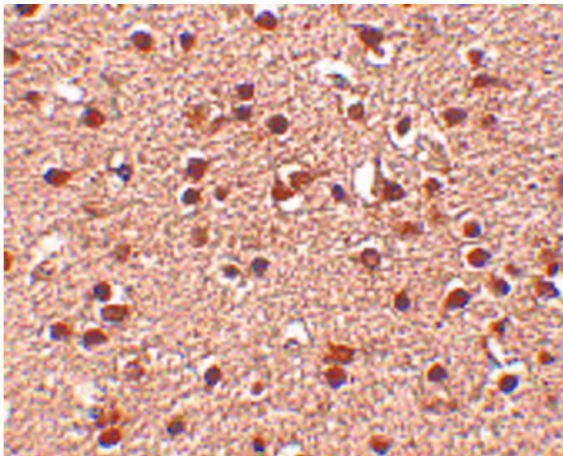
<b>Storage Condition:</b>	Store vial at -20° C prior to opening. Aliquot contents and freeze at -20° C or below for extended storage. Avoid cycles of freezing and thawing. Centrifuge product if not completely clear after standing at room temperature. This product is stable for several weeks at 4° C as an undiluted liquid. Dilute only prior to immediate use.
<b>Expiration:</b>	Expiration date is one (1) year from date of receipt.

## Images



### Immunofluorescence Microscopy

Immunofluorescence Microscopy of Dact2 antibody. Tissue: Human brain cells. Fixation: 0.5% PFA. Antigen retrieval: not required. Primary antibody: Dact2 antibody at 20 µg/mL for 1 h at RT. Secondary antibody: Fluorescein rabbit secondary antibody at 1:10,000 for 45 min at RT. Staining: Dact2 as a red fluorescent signal.



### Immunohistochemistry

Immunohistochemistry of Dact2 antibody. Tissue: Human brain tissue. Fixation: formalin fixed paraffin embedded. Antigen retrieval: not required. Primary antibody: Dact2 antibody at 2.5 µg/mL for 1 h at RT. Secondary antibody: Peroxidase rabbit secondary antibody at 1:10,000 for 45 min at RT. Localization: Dact2 is nuclear and occasionally cytoplasmic. Staining: Dact2 as precipitated red signal with hematoxylin purple nuclear counterstain.

**Western Blot**

Western Blot of Dact2 antibody. Lane 1: SK-N-SH cell lysate at 1  $\mu\text{g}/\text{mL}$ . Load: 35  $\mu\text{g}$  per lane. Secondary antibody: Peroxidase rabbit secondary antibody at 1:10,000 for 45 min at RT. Block: 5% BLOTTO overnight at 4°C. Predicted/Observed size: 82.7 kDa, ~82 kDa for Dact2.

**Disclaimer**

This product is for research use only and is not intended for therapeutic or diagnostic applications. Please contact a technical service representative for more information. All products of animal origin manufactured by Rockland Immunochemicals are derived from starting materials of North American origin. Collection was performed in United States Department of Agriculture (USDA) inspected facilities and all materials have been inspected and certified to be free of disease and suitable for exportation. All properties listed are typical characteristics and are not specifications. All suggestions and data are offered in good faith but without guarantee as conditions and methods of use of our products are beyond our control. All claims must be made within 30 days following the date of delivery. The prospective user must determine the suitability of our materials before adopting them on a commercial scale. Suggested uses of our products are not recommendations to use our products in violation of any patent or as a license under any patent of Rockland Immunochemicals, Inc. If you require a commercial license to use this material and do not have one, then return this material, unopened to: Rockland Inc., P.O. BOX 5199, Limerick, Pennsylvania, USA.