

Datasheet for 600-401-AR8

Cyclin O Antibody

Overview

Description:	Anti-Cyclin O [RABBIT] Antibody - 600-401-AR8
Item No.:	600-401-AR8
Size:	100 µg
Applications:	ELISA, WB
Reactivity:	Human, Mouse, Rat
Host Species:	Rabbit

Product Details

Background:	Cyclin O, also known as CCNO, has recently been identified as a Cdk1- and Cdk2-activating cyclin specific to apoptosis in lymphoid cells. Cyclin O binds to and activates Cdk2 in response to intrinsic apoptotic stimuli such as glucocorticoids or DNA-damaging agents. Suppression of Cyclin O expression by shRNA leads to the inhibition of glucocorticoid and DNA-damage-induced apoptosis due to a failure of apical caspase activation while leaving the CD95 death receptor-mediated apoptosis intact. Note: this gene, which had a previous symbol of UNG2, was erroneously identified as a uracil DNA glycosylase. A later publication identified this gene's product as a cyclin protein family member.
Synonyms:	Cyclin O Antibody, CCNU, UDG2, Cyclin-O
Host Species:	Rabbit
Clonality:	Polyclonal
Format:	IgG

Target Details

Gene Name:	CCNO
Reactivity:	Human, Mouse, Rat
Immunogen Type:	Conjugated Peptide
Immunogen:	Anti-Cyclin O antibody was prepared from whole rabbit serum produced by repeated immunizations with a 14 amino acid synthetic peptide from near the N-terminus of human Cyclin O.

Purity/Specificity: Anti-Cyclin O Antibody was affinity purified from monospecific antiserum by immunoaffinity chromatography. At least two isoforms of Cyclin O are known to exist; this antibody will recognize both isoforms.

Relevant Links:

- [UniProtKB - P22674](#)
- [GeneID - 10309](#)
- [NCBI - NP_066970](#)

Application Details

Tested Applications: ELISA, WB

Application Note: Anti-Cyclin O Antibody has been tested for use in ELISA and Western Blotting. Specific conditions for reactivity should be optimized by the end user. Expect a band at approximately 29 kDa in Western Blots of specific cell lysates and tissues.

Assay Dilutions: All assays should be optimized by the user. Recommended dilutions (if any) may be listed below.

ELISA: 1:10,000 - 1:20,000

WB: 1-2 µg/mL

Formulation

Physical State: Liquid (sterile filtered)

Concentration: 1 mg/mL by UV absorbance at 280 nm

Buffer: 0.01 M Sodium Phosphate, 0.25 M Sodium Chloride, pH 7.2

Preservative: 0.02% (w/v) Sodium Azide

Stabilizer: None

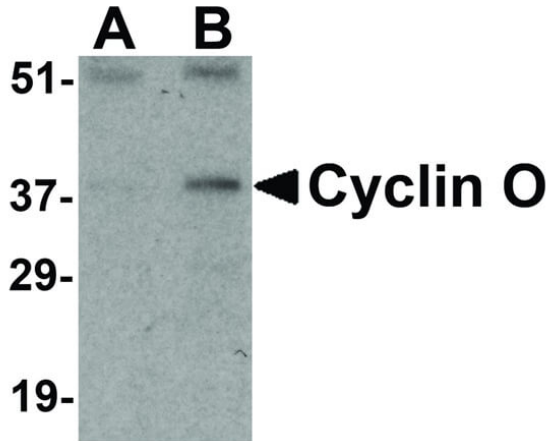
Shipping & Handling

Shipping Condition: Dry Ice

Storage Condition: Store vial at -20° C prior to opening. Aliquot contents and freeze at -20° C or below for extended storage. Avoid cycles of freezing and thawing. Centrifuge product if not completely clear after standing at room temperature. This product is stable for several weeks at 4° C as an undiluted liquid. Dilute only prior to immediate use.

Expiration: Expiration date is one (1) year from date of receipt.

Images



Western Blot

Western Blot of Cyclin O antibody. Load: 35 μ g mouse bladder tissue lysate per lane. Primary antibody: Lane A: Cyclin O antibody at 1 μ g/mL; Lane B: Cyclin O antibody at 2 μ g/mL; overnight at 4°C. Secondary antibody: Peroxidase rabbit secondary antibody at 1:10,000 for 45 min at RT. Block: 5% BLOTTO overnight at 4°C. Predicted/Observed size: 38 kDa, 38 kDa for Cyclin O.

Disclaimer

This product is for research use only and is not intended for therapeutic or diagnostic applications. Please contact a technical service representative for more information. All products of animal origin manufactured by Rockland Immunochemicals are derived from starting materials of North American origin. Collection was performed in United States Department of Agriculture (USDA) inspected facilities and all materials have been inspected and certified to be free of disease and suitable for exportation. All properties listed are typical characteristics and are not specifications. All suggestions and data are offered in good faith but without guarantee as conditions and methods of use of our products are beyond our control. All claims must be made within 30 days following the date of delivery. The prospective user must determine the suitability of our materials before adopting them on a commercial scale. Suggested uses of our products are not recommendations to use our products in violation of any patent or as a license under any patent of Rockland Immunochemicals, Inc. If you require a commercial license to use this material and do not have one, then return this material, unopened to: Rockland Inc., P.O. BOX 5199, Limerick, Pennsylvania, USA.