

Datasheet for 600-401-AR2**CX3CL1 Antibody****Overview**

Description:	Anti-CX3CL1 (RABBIT) Antibody - 600-401-AR2
Item No.:	600-401-AR2
Size:	100 µg
Applications:	ELISA, IP, WB
Reactivity:	Human, Mouse
Host Species:	Rabbit

Product Details

Background:	Chemokines are a family of proteins associated with the trafficking of leukocytes in immune surveillance and inflammatory cell recruitment. They are classified based on the positions of key cysteine residues. CX3CL1 is a CX3C chemokine known to induce adhesion and migration of leukocytes mediated by a membrane-bound and soluble form respectively. Recent experiments have shown that CX3CL1 can suppress the production of nitrous oxide, interleukin-6, and TNF-α in activated microglia and neuronal cells, suggesting that it may act as an intrinsic inhibitor against neurotoxicity by activated microglia. Its receptor, CX3CR1, also functions as a co-receptor for HIV-1 and HIV-2 envelope fusion and virus infection, which can be inhibited by CX3CL1.
Synonyms:	CX3CL1 Antibody, NTN, NTT, CXC3, CXC3C, SCYD1, ABCD-3, C3Xkine, fractalkine, neurotactin, FKN, A-152E5.2, Fractalkine, C-X3-C motif chemokine 1
Host Species:	Rabbit
Clonality:	Polyclonal
Format:	IgG

Target Details

Gene Name:	CX3CL1
Reactivity:	Human, Mouse
Immunogen Type:	Conjugated Peptide

Immunogen:	Anti-CX3CL1 antibody was prepared from whole rabbit serum produced by repeated immunizations with a peptide corresponding to 18 amino acids near the N-terminus of human CX3CL1.
Purity/Specificity:	Anti-CX3CL1 Antibody was affinity purified from monospecific antiserum by immunoaffinity chromatography. Cross reactivity with CX3CL1 from other sources has not been determined.
Relevant Links:	<ul style="list-style-type: none">• UniProtKB - P78423• GeneID - 6376• NCBI - AAB50014

Application Details

Tested Applications:	ELISA, IP, WB
Application Note:	Anti-CX3CL1 Antibody has been tested for use in ELISA, Western Blotting and Immunoprecipitation. Specific conditions for reactivity should be optimized by the end user. Expect a band at approximately 42 kDa in Western Blots of specific cell lysates and tissues.
Assay Dilutions:	All assays should be optimized by the user. Recommended dilutions (if any) may be listed below.
ELISA:	1:5000 - 1:20,000
IP:	User Optimized
WB:	0.5-2 µg/mL

Formulation

Physical State:	Liquid (sterile filtered)
Concentration:	1 mg/mL by UV absorbance at 280 nm
Buffer:	0.01 M Sodium Phosphate, 0.25 M Sodium Chloride, pH 7.2
Preservative:	0.02% (w/v) Sodium Azide
Stabilizer:	None

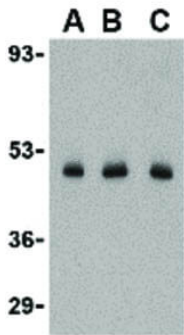
Shipping & Handling

Shipping Condition:	Dry Ice
----------------------------	---------

Storage Condition: Store vial at -20° C prior to opening. Aliquot contents and freeze at -20° C or below for extended storage. Avoid cycles of freezing and thawing. Centrifuge product if not completely clear after standing at room temperature. This product is stable for several weeks at 4° C as an undiluted liquid. Dilute only prior to immediate use.

Expiration: Expiration date is one (1) year from date of receipt.

Images



Western Blot

Western Blot of CX3CL1 antibody. Lane 1: C2C12 cell lysate with CX3CL1 at 0.5 mg/mL. Lane 2: C2C12 cell lysate with CX3CL1 at 1 mg/mL. Lane 3: C2C12 cell lysate with CX3CL1 at 2 mg/mL. Load: 35 µg per lane. Secondary antibody: Peroxidase rabbit secondary antibody at 1:10,000 for 45 min at RT. Block: 5% BLOTTO overnight at 4°C. Predicted/Observed size: 42.2 kDa, 47 kDa for CX3CL1.

Disclaimer

This product is for research use only and is not intended for therapeutic or diagnostic applications. Please contact a technical service representative for more information. All products of animal origin manufactured by Rockland Immunochemicals are derived from starting materials of North American origin. Collection was performed in United States Department of Agriculture (USDA) inspected facilities and all materials have been inspected and certified to be free of disease and suitable for exportation. All properties listed are typical characteristics and are not specifications. All suggestions and data are offered in good faith but without guarantee as conditions and methods of use of our products are beyond our control. All claims must be made within 30 days following the date of delivery. The prospective user must determine the suitability of our materials before adopting them on a commercial scale. Suggested uses of our products are not recommendations to use our products in violation of any patent or as a license under any patent of Rockland Immunochemicals, Inc. If you require a commercial license to use this material and do not have one, then return this material, unopened to: Rockland Inc., P.O. BOX 5199, Limerick, Pennsylvania, USA.