

Datasheet for 600-401-AP9**CTRP3 Antibody****Overview**

Description:	Anti-CTRP3 (RABBIT) Antibody - 600-401-AP9
Item No.:	600-401-AP9
Size:	100 µg
Applications:	ELISA, IF, IHC, WB
Reactivity:	Human, Mouse
Host Species:	Rabbit

Product Details

Background:	Adipose tissue of an organism plays a major role in regulating physiologic and pathologic processes such as metabolism and immunity by producing and secreting a variety of bioactive molecules termed adipokines. One highly conserved family of adipokines is adiponectin/ACRP30 and its structural and functional paralogs, the C1q/tumor necrosis factor-alpha-related proteins (CTRPs) 1-7. Unlike adiponectin, which is expressed exclusively by differentiated adipocytes, the CTRPs are expressed in a wide variety of tissues. An analysis of the crystal structure of adiponectin revealed a structural and evolutionary link between TNF and C1q-containing proteins, suggesting that these proteins arose from a common ancestral innate immunity gene. Multiple isoforms of human CTRP3 have been reported. It has been suggested that CTRP3 may play a role in skeletal development.
Synonyms:	CTRP3 Antibody, CORS, CORCS, CTRP3, CORS26, C1ATNF3, CORS-26, UNQ753/PRO1484, Complement C1q tumor necrosis factor-related protein 3, Collagenous repeat-containing sequence 26 kDa protein
Host Species:	Rabbit
Clonality:	Polyclonal
Format:	IgG

Target Details

Gene Name:	C1QTNF3
Reactivity:	Human, Mouse

Immunogen Type:	Conjugated Peptide
Immunogen:	Anti-CTRP3 antibody was prepared from whole rabbit serum produced by repeated immunizations with a 16 amino acid synthetic peptide from near the internal region of human CTRP3.
Purity/Specificity:	Anti-CTRP3 Antibody was affinity purified from monospecific antiserum by immunoaffinity chromatography. These proteins are often highly modified post-translationally and migrate in SDS-PAGE at positions other than their predicted size.
Relevant Links:	<ul style="list-style-type: none">• UniProtKB - Q9BXJ4• GeneID - 114899• NCBI - NP_852100

Application Details

Tested Applications:	ELISA, IF, IHC, WB
Application Note:	Anti-CTRP3 Antibody has been tested for use in ELISA, Western Blotting, Immunohistochemistry and Immunofluorescence. Specific conditions for reactivity should be optimized by the end user. Expect a band at approximately 27 kDa in Western Blots of specific cell lysates and tissues.
Assay Dilutions:	All assays should be optimized by the user. Recommended dilutions (if any) may be listed below.
ELISA:	1:10,000
IF:	10 µg/mL
IHC:	2 µg/mL
WB:	1 µg/mL

Formulation

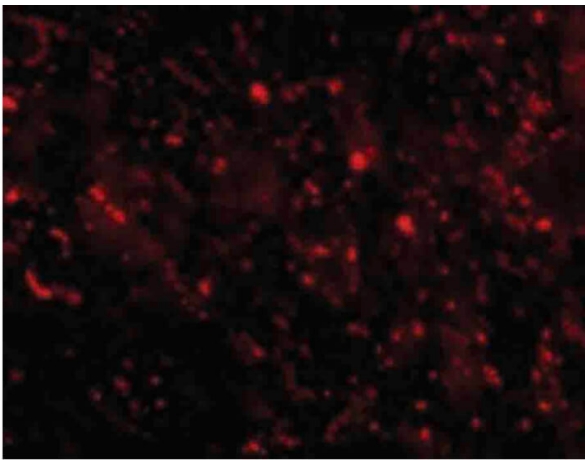
Physical State:	Liquid (sterile filtered)
Concentration:	1 mg/mL by UV absorbance at 280 nm
Buffer:	0.01 M Sodium Phosphate, 0.25 M Sodium Chloride, pH 7.2
Preservative:	0.02% (w/v) Sodium Azide
Stabilizer:	None

Shipping & Handling

Shipping Condition:	Dry Ice
----------------------------	---------

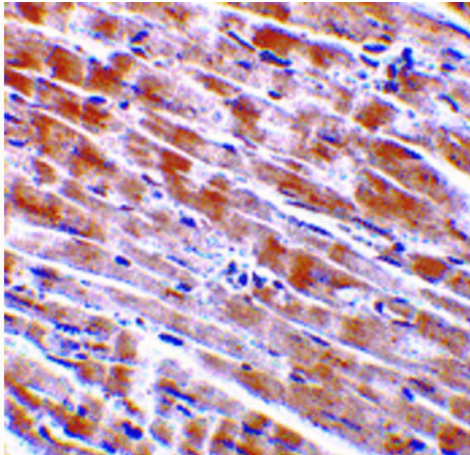
Storage Condition:	Store vial at -20° C prior to opening. Aliquot contents and freeze at -20° C or below for extended storage. Avoid cycles of freezing and thawing. Centrifuge product if not completely clear after standing at room temperature. This product is stable for several weeks at 4° C as an undiluted liquid. Dilute only prior to immediate use.
Expiration:	Expiration date is one (1) year from date of receipt.

Images



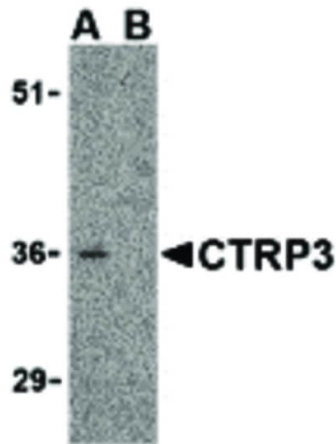
Immunofluorescence Microscopy

Immunofluorescence Microscopy of CTRP3 antibody. Cell Type: mouse heart cells. Fixation: 0.5% PFA. Antigen retrieval: not required. Primary antibody: CTRP3 antibody at 10 µg/mL for 1 h at RT. Secondary antibody: Fluorescein rabbit secondary antibody at 1:10,000 for 45 min at RT. Localization: CTRP3 is secreted. Staining: CTRP3 as red fluorescent signal.



Immunohistochemistry

Immunohistochemistry of CTRP3 antibody. Tissue: mouse heart tissue. Fixation: formalin fixed paraffin embedded. Antigen retrieval: not required. Primary antibody: CTRP3 antibody at 2 µg/mL for 1 h at RT. Secondary antibody: Peroxidase rabbit secondary antibody at 1:10,000 for 45 min at RT. Localization: CTRP3 is secreted. Staining: CTRP3 is stained with hematoxylin purple nuclear counterstain.



Western Blot

Western Blot of CTRP3 antibody in mouse heart cell lysate.

Lane A: CTRP3 antibody in the absence of blocking peptide.

Lane B: CTRP3 antibody in the presence of blocking peptide.

Load: 35 µg per lane. Primary antibody: CTRP3 antibody at

1 µg/mL for overnight at 4°C. Secondary antibody:

Peroxidase rabbit secondary antibody at 1:10,000 for 45 min

at RT. Block: 5% BLOTTO overnight at 4°C.

Predicted/Observed size: 27 kDa, 36 kDa for CTRP3. Other

band(s): CTRP3 splice variants and isoforms.

Disclaimer

This product is for research use only and is not intended for therapeutic or diagnostic applications. Please contact a technical service representative for more information. All products of animal origin manufactured by Rockland Immunochemicals are derived from starting materials of North American origin. Collection was performed in United States Department of Agriculture (USDA) inspected facilities and all materials have been inspected and certified to be free of disease and suitable for exportation. All properties listed are typical characteristics and are not specifications. All suggestions and data are offered in good faith but without guarantee as conditions and methods of use of our products are beyond our control. All claims must be made within 30 days following the date of delivery. The prospective user must determine the suitability of our materials before adopting them on a commercial scale. Suggested uses of our products are not recommendations to use our products in violation of any patent or as a license under any patent of Rockland Immunochemicals, Inc. If you require a commercial license to use this material and do not have one, then return this material, unopened to: Rockland Inc., P.O. BOX 5199, Limerick, Pennsylvania, USA.