

Datasheet for 600-401-AN5**CRISP2 Antibody****Overview**

Description:	Anti-CRISP2 (RABBIT) Antibody - 600-401-AN5
Item No.:	600-401-AN5
Size:	100 µg
Applications:	ELISA, IF, IHC, WB
Reactivity:	Human
Host Species:	Rabbit

Product Details

Background:	The cysteine-rich secretory proteins (CRISP) family is a group of four proteins that are strongly expressed in the male reproductive tract and have been implicated in having roles in male fertility. CRISP2, also known as TPX1, has been implicated in the adhesion between spermatids and Sertoli cells, and with CRISP1, is thought to be involved in sperm-egg fusion. CRISP2 has been shown to regulate the Ca ²⁺ influx through ryanodine receptors (RYR) and may influence the acrosome reaction or sperm motility. CRISP2 has also been shown to bind to the mitogen-activated protein kinase kinase kinase 11 (MAP3K11) and localizes to the developing acrosome, suggesting this CRISP2-MAP3K11 complex may have a role in acrosome development.
Synonyms:	CRISP2 Antibody, CT36, TPX1, TSP1, GAPDL5, CRISP-2, Cysteine-rich secretory protein 2, Testis-specific protein TPX-1
Host Species:	Rabbit
Clonality:	Polyclonal
Format:	IgG

Target Details

Gene Name:	CRISP2
Reactivity:	Human
Immunogen Type:	Conjugated Peptide
Immunogen:	Anti-CRISP2 antibody was prepared from whole rabbit serum produced by repeated immunizations with a 15 amino acid synthetic peptide near the N-terminus of human CRISP2.

Purity/Specificity: Anti-CRISP2 Antibody was affinity purified from monospecific antiserum by immunoaffinity chromatography. Cross reactivity with CRISP2 from other sources has not been determined.

Relevant Links:

- [UniProtKB - P16562](#)
- [GeneID - 7180](#)
- [NCBI - NP_001135880](#)

Application Details

Tested Applications: ELISA, IF, IHC, WB

Application Note: Anti-CRISP2 Antibody has been tested for use in ELISA, Western Blotting, Immunohistochemistry and Immunofluorescence. Specific conditions for reactivity should be optimized by the end user. Expect a band at approximately 27 kDa in Western Blots of specific cell lysates and tissues.

Assay Dilutions: All assays should be optimized by the user. Recommended dilutions (if any) may be listed below.

ELISA: 1:5000 - 1:10000

IF: 20 µg/mL

IHC: 10 µg/mL

WB: 0.5-1 µg/mL

Formulation

Physical State: Liquid (sterile filtered)

Concentration: 1 mg/mL by UV absorbance at 280 nm

Buffer: 0.01 M Sodium Phosphate, 0.25 M Sodium Chloride, pH 7.2

Preservative: 0.02% (w/v) Sodium Azide

Stabilizer: None

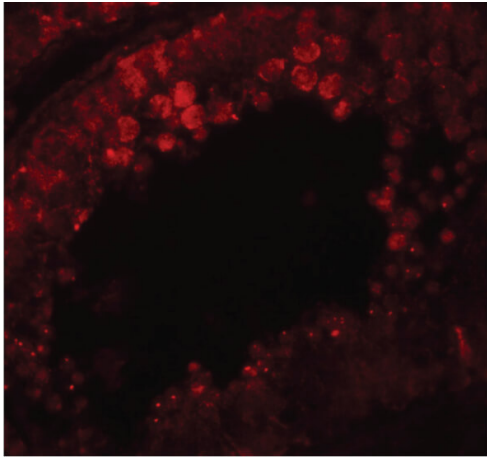
Shipping & Handling

Shipping Condition: Dry Ice

Storage Condition: Store vial at -20° C prior to opening. Aliquot contents and freeze at -20° C or below for extended storage. Avoid cycles of freezing and thawing. Centrifuge product if not completely clear after standing at room temperature. This product is stable for several weeks at 4° C as an undiluted liquid. Dilute only prior to immediate use.

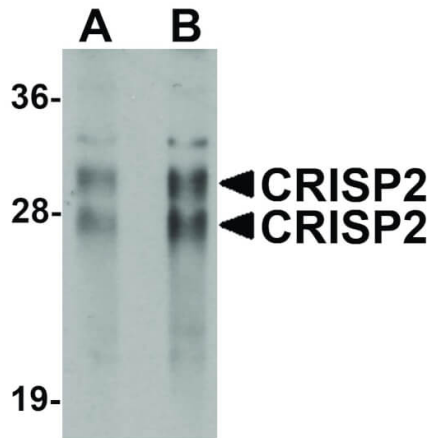
Expiration: Expiration date is one (1) year from date of receipt.

Images



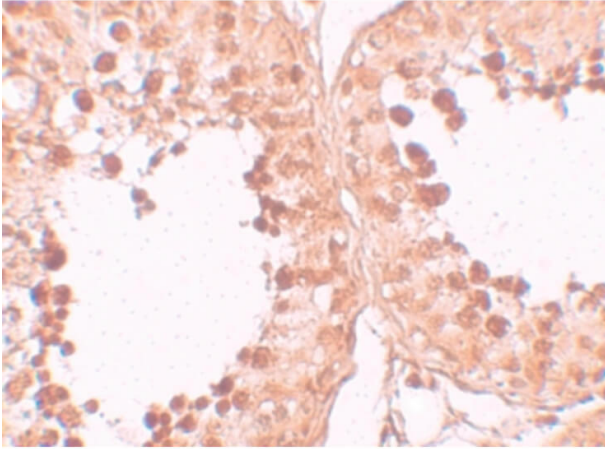
Immunofluorescence Microscopy

Immunofluorescence Microscopy of CRISP2 antibody.
Tissue: Human testis tissue. Fixation: 0.5% PFA. Antigen retrieval: not required. Primary antibody: CRISP2 antibody at 20 µg/mL for 1 h at RT. Secondary antibody: Fluorescein rabbit secondary antibody at 1:10,000 for 45 min at RT. Localization: CRISP2 is secreted into the extracellular space. Staining: CRISP2 as red fluorescent signal.



Western Blot

Western Blot of CRISP2 antibody. Lane 1: Human testis tissue lysate with CRISP2 antibody at 0.5 µg/mL. Lane 2: Human testis tissue lysate with CRISP2 antibody at 1 µg/mL. Secondary antibody: Peroxidase rabbit secondary antibody at 1:10,000 for 45 min at RT. Block: 5% BLOTTO overnight at 4°C. Predicted/Observed size: 27 kDa, 27 kDa for CRISP2. Other band(s): CRISP2 splice variants and isoforms.



Immunohistochemistry

Immunohistochemistry of CRISP2 antibody. Tissue: Human testis tissue. Fixation: formalin fixed paraffin embedded. Antigen retrieval: not required. Primary antibody: CRISP2 antibody at 10 µg/mL for 1 h at RT. Secondary antibody: Peroxidase rabbit secondary antibody at 1:10,000 for 45 min at RT. Localization: CRISP2 is secreted into the extracellular space. Staining: CRISP2 as precipitated brown signal with blue nuclear counterstain.

Disclaimer

This product is for research use only and is not intended for therapeutic or diagnostic applications. Please contact a technical service representative for more information. All products of animal origin manufactured by Rockland Immunochemicals are derived from starting materials of North American origin. Collection was performed in United States Department of Agriculture (USDA) inspected facilities and all materials have been inspected and certified to be free of disease and suitable for exportation. All properties listed are typical characteristics and are not specifications. All suggestions and data are offered in good faith but without guarantee as conditions and methods of use of our products are beyond our control. All claims must be made within 30 days following the date of delivery. The prospective user must determine the suitability of our materials before adopting them on a commercial scale. Suggested uses of our products are not recommendations to use our products in violation of any patent or as a license under any patent of Rockland Immunochemicals, Inc. If you require a commercial license to use this material and do not have one, then return this material, unopened to: Rockland Inc., P.O. BOX 5199, Limerick, Pennsylvania, USA.