

Datasheet for 600-401-AN1**CRBN Antibody****Overview**

Description:	Anti-CRBN (RABBIT) Antibody - 600-401-AN1
Item No.:	600-401-AN1
Size:	100 µg
Applications:	ELISA, IF, IHC, WB
Reactivity:	Human, Mouse, Rat
Host Species:	Rabbit

Product Details

Background:	CRBN, a member of the Lon protease protein family, plays a role in brain development (1). It is a component of the DCX (DDB1-CUL4-X-box) E3 protein ligase complex, a complex that mediates the ubiquitination and subsequent proteasomal degradation of target proteins and is required for limb outgrowth and expression of the fibroblast growth factor FGF8 (2). CRBN is thought to regulate the assembly and neuronal surface expression of large-conductance calcium-activated potassium channels in brain regions involved in memory and learning via its interaction with KCNT1. It is widely expressed and highly expressed in brain (3,4).
Synonyms:	Cereblon, AD-006, DKFZp781K0715, MGC27358, MRT2A
Host Species:	Rabbit
Clonality:	Polyclonal
Format:	IgG

Target Details

Gene Name:	CRBN
Reactivity:	Human, Mouse, Rat
Immunogen Type:	Conjugated Peptide
Immunogen:	Anti-CRBN antibody was prepared from whole rabbit serum produced by repeated immunizations with a 16 amino acid peptide near the C-terminus of human CRBN.

Purity/Specificity: Anti-CRBN antibody was affinity purified from monospecific antiserum by immunoaffinity chromatography. CRBN antibody is human, mouse and rat reactive. At least two isoforms of CRBN are known to exist; this antibody will detect both isoforms.

Relevant Links:

- [UniProtKB - Q96SW2](#)
- [GeneID - 51185](#)
- [NCBI - NP_057386](#)

Application Details

Tested Applications: ELISA, IF, IHC, WB

Application Note: Anti-CRBN Antibody has been tested for use in ELISA, immunohistochemistry, immunofluorescence, and Western Blotting. Specific conditions for reactivity should be optimized by the end user. Expect a band at approximately 51 kDa in Western Blots of specific cell lysates and tissues.

Assay Dilutions: All assays should be optimized by the user. Recommended dilutions (if any) may be listed below.

ELISA: 1:10,000 - 1:20,000

IF: 20 µg/mL

IHC: 5 µg/mL

WB: 1-2 µg/mL

Formulation

Physical State: Liquid (sterile filtered)

Concentration: 1.0 mg/mL by UV absorbance at 280 nm

Buffer: 0.01 M Sodium Phosphate, 0.25 M Sodium Chloride, pH 7.2

Preservative: 0.02% (w/v) Sodium Azide

Stabilizer: None

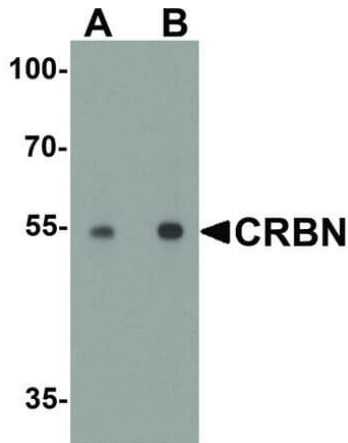
Shipping & Handling

Shipping Condition: Wet Ice

Storage Condition: Antibody can be stored at 4°C up to one year. Antibodies should not be exposed to prolonged high temperatures.

Expiration: Expiration date is one (1) year from date of receipt.

Images



Western Blot

Western Blot of Rabbit anti-CRBN antibody. Lane A: human testis tissue lysate at 0.5 µg/mL. Lane B: human testis tissue lysate at 1 µg/mL. Primary antibody: CRBN antibody overnight at 4°C. Secondary antibody: Goat anti-Rabbit HRP secondary antibody. Block: 5% BLOTTO. Predicted/Observed size: 49 kDa, 54 kDa for CRBN.

Disclaimer

This product is for research use only and is not intended for therapeutic or diagnostic applications. Please contact a technical service representative for more information. All products of animal origin manufactured by Rockland Immunochemicals are derived from starting materials of North American origin. Collection was performed in United States Department of Agriculture (USDA) inspected facilities and all materials have been inspected and certified to be free of disease and suitable for exportation. All properties listed are typical characteristics and are not specifications. All suggestions and data are offered in good faith but without guarantee as conditions and methods of use of our products are beyond our control. All claims must be made within 30 days following the date of delivery. The prospective user must determine the suitability of our materials before adopting them on a commercial scale. Suggested uses of our products are not recommendations to use our products in violation of any patent or as a license under any patent of Rockland Immunochemicals, Inc. If you require a commercial license to use this material and do not have one, then return this material, unopened to: Rockland Inc., P.O. BOX 5199, Limerick, Pennsylvania, USA.