

Datasheet for 600-401-AM7**CPEB1 Antibody****Overview**

Description:	Anti-CPEB1 (RABBIT) Antibody - 600-401-AM7
Item No.:	600-401-AM7
Size:	100 µg
Applications:	ELISA, WB
Reactivity:	Human, Mouse, Rat
Host Species:	Rabbit

Product Details

Background:	CPEB1 is an RNA binding protein that contains an RNA-recognition motif and a zinc finger-containing region found in a wide range of vertebrates and invertebrates. CPEB1 forms the nucleus of a complex of factors that regulate poly(A) elongation and promotes polyadenylation-induced translation. CPEB1 mediates many diverse biological processes such as germ cell development, cell division and senescence, and synaptic plasticity. Recently, it was discovered that CPEB1 is involved in beta-catenin mRNA translation and cell migration in astrocytes as well as regulating hypoxia-inducible factor (HIF)-1 expression, demonstrating the wide range of processes in which CPEB1 plays a role. At least four isoforms of CPEB1 are known to exist.
Synonyms:	CPEB1 Antibody, CEBP, CPEB, CPEB-1, CPE-BP1, hCPEB-1, Cytoplasmic polyadenylation element-binding protein 1
Host Species:	Rabbit
Clonality:	Polyclonal
Format:	IgG

Target Details

Gene Name:	CPEB1
Reactivity:	Human, Mouse, Rat
Immunogen Type:	Conjugated Peptide

Immunogen:	Anti-CPEB1 antibody was prepared from whole rabbit serum produced by repeated immunizations with a 14 amino acid synthetic peptide from near the N-terminus of human CPEB1.
Purity/Specificity:	Anti-CPEB1 Antibody was affinity purified from monospecific antiserum by immunoaffinity chromatography. Cross reactivity with CPEB1 from other sources has not been determined.
Relevant Links:	<ul style="list-style-type: none">• UniProtKB - Q9BZB8• GeneID - 64506• NCBI - NP_001073001.1

Application Details

Tested Applications:	ELISA, WB
Application Note:	Anti-CPEB1 Antibody has been tested for use in ELISA and Western Blotting. Specific conditions for reactivity should be optimized by the end user. Expect a band at approximately 63 kDa in Western Blots of specific cell lysates and tissues.
Assay Dilutions:	All assays should be optimized by the user. Recommended dilutions (if any) may be listed below.
ELISA:	1:10,000 - 1:20,000
WB:	1-2 µg/mL

Formulation

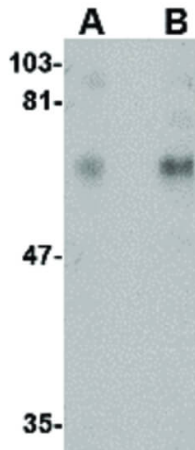
Physical State:	Liquid (sterile filtered)
Concentration:	1 mg/mL by UV absorbance at 280 nm
Buffer:	0.01 M Sodium Phosphate, 0.25 M Sodium Chloride, pH 7.2
Preservative:	0.02% (w/v) Sodium Azide
Stabilizer:	None

Shipping & Handling

Shipping Condition:	Dry Ice
Storage Condition:	Store vial at -20° C prior to opening. Aliquot contents and freeze at -20° C or below for extended storage. Avoid cycles of freezing and thawing. Centrifuge product if not completely clear after standing at room temperature. This product is stable for several weeks at 4° C as an undiluted liquid. Dilute only prior to immediate use.

Expiration: Expiration date is one (1) year from date of receipt.

Images



Western Blot

Western Blot of CPEB1 antibody. Lane A: Rat brain tissue lysate at 1 $\mu\text{g}/\text{mL}$. Lane B: Rat brain tissue lysate at 2 $\mu\text{g}/\text{mL}$. Load: 35 μg per lane. Secondary antibody: Peroxidase rabbit secondary antibody at 1:10,000 for 45 min at RT. Block: 5% BLOTTO overnight at 4°C. Predicted/Observed size: 62.5 kDa, ~65 kDa for CPEB1.

Disclaimer

This product is for research use only and is not intended for therapeutic or diagnostic applications. Please contact a technical service representative for more information. All products of animal origin manufactured by Rockland Immunochemicals are derived from starting materials of North American origin. Collection was performed in United States Department of Agriculture (USDA) inspected facilities and all materials have been inspected and certified to be free of disease and suitable for exportation. All properties listed are typical characteristics and are not specifications. All suggestions and data are offered in good faith but without guarantee as conditions and methods of use of our products are beyond our control. All claims must be made within 30 days following the date of delivery. The prospective user must determine the suitability of our materials before adopting them on a commercial scale. Suggested uses of our products are not recommendations to use our products in violation of any patent or as a license under any patent of Rockland Immunochemicals, Inc. If you require a commercial license to use this material and do not have one, then return this material, unopened to: Rockland Inc., P.O. BOX 5199, Limerick, Pennsylvania, USA.