

Datasheet for 600-401-AM5 COMMD7 Antibody

Overview

Description:	Anti-COMMD7 (RABBIT) Antibody - 600-401-AM5
Item No.:	600-401-AM5
Size:	100 µg
Applications:	ELISA, IF, IHC, WB
Reactivity:	Human, Mouse, Rat
Host Species:	Rabbit

Product Details

Background:	COMMD7 (COMM domain-containing protein 7) plays a role in the regulation NF-kappaB (1). It associates with the NF-kB complex and suppresses its transcriptional activity (2). COMMD7 contains 1 COMM domain and widely expressed with highest expression in lung (3). COMMD7 is a newly identified gene overexpressed in hepatocellular carcinoma (HCC) (4). COMMD7 is associated with tumor invasion and poor prognosis by NF-kappaB signaling pathway (4).
Synonyms:	COMMD7 Antibody, C20orf92, dJ1085F17.3, C20orf92, COMM domain-containing protein 7
Host Species:	Rabbit
Clonality:	Polyclonal
Format:	IgG

Target Details

Gene Name:	COMMD7
Reactivity:	Human, Mouse, Rat
Immunogen Type:	Conjugated Peptide
Immunogen:	Anti-COMMD7 antibody was prepared from whole rabbit serum produced by repeated immunizations with a 19 amino acid peptide near the internal region of human COMMD7.
Purity/Specificity:	Anti-COMMD7 antibody was affinity purified from monospecific antiserum by immunoaffinity chromatography. COMMD7 antibody is human, mouse and rat reactive. Multiple transcript variants encoding different isoforms have been found for COMMD7.

Relevant Links:	<ul style="list-style-type: none">• UniProtKB - Q86VX2• GeneID - 149951• NCBI - NP_444269
------------------------	---

Application Details

Tested Applications:	ELISA, IF, IHC, WB
Application Note:	Anti-COMMD7 Antibody has been tested for use in ELISA, Western Blotting, Immunohistochemistry and Immunofluorescence. Specific conditions for reactivity should be optimized by the end user. Expect a band at approximately 23 kDa in Western Blots of specific cell lysates and tissues.
Assay Dilutions:	All assays should be optimized by the user. Recommended dilutions (if any) may be listed below.
ELISA:	1:10,000 - 1:20,000
IF:	20 µg/mL
IHC:	5 µg/mL
WB:	1-2 µg/mL

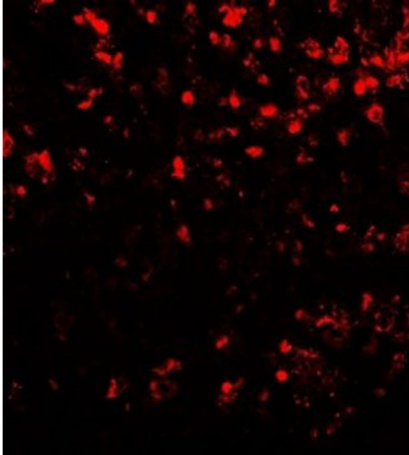
Formulation

Physical State:	Liquid (sterile filtered)
Concentration:	1 mg/mL by UV absorbance at 280 nm
Buffer:	0.01 M Sodium Phosphate, 0.25 M Sodium Chloride, pH 7.2
Preservative:	0.02% (w/v) Sodium Azide
Stabilizer:	None

Shipping & Handling

Shipping Condition:	Dry Ice
Storage Condition:	Store vial at -20° C prior to opening. Aliquot contents and freeze at -20° C or below for extended storage. Avoid cycles of freezing and thawing. Centrifuge product if not completely clear after standing at room temperature. This product is stable for several weeks at 4° C as an undiluted liquid. Dilute only prior to immediate use.
Expiration:	Expiration date is one (1) year from date of receipt.

Images

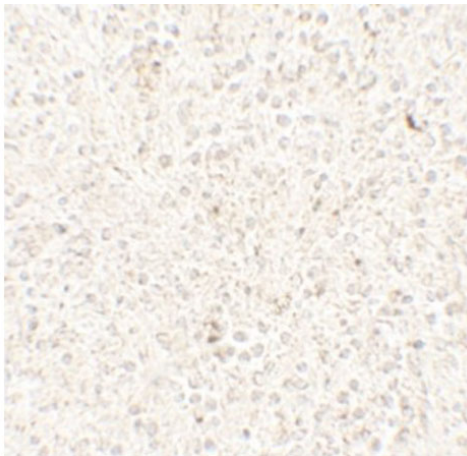


Immunofluorescence Microscopy

Immunofluorescence of COMMD7.

Tissue: human spleen tissue.

Primary Antibody: COMMD7 antibody at 20 µg/mL.

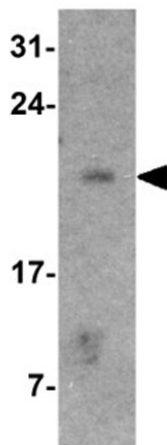


Immunohistochemistry

Immunohistochemistry of COMMD7.

Tissue: human spleen tissue.

Primary Antibody: COMMD7 antibody at 5 µg/mL.



Western Blot

Western blot of COMMD7.

Load: mouse spleen tissue lysate.

Primary Antibody: COMMD7 antibody at 1 µg/ml.

Disclaimer

This product is for research use only and is not intended for therapeutic or diagnostic applications. Please contact a technical service representative for more information. All products of animal origin manufactured by Rockland Immunochemicals are derived from starting materials of North American origin. Collection was performed in United States Department of Agriculture (USDA) inspected facilities and all materials have been inspected and certified to be free of disease and suitable for exportation. All properties listed are typical characteristics and are not specifications. All suggestions and data are offered in good faith but without guarantee as conditions and methods of use of our products are beyond our control. All claims must be made within 30 days following the date of delivery. The prospective user must determine the suitability of our materials before adopting them on a commercial scale. Suggested uses of our products are not recommendations to use our products in violation of any patent or as a license under any patent of Rockland Immunochemicals, Inc. If you require a commercial license to use this material and do not have one, then return this material, unopened to: Rockland Inc., P.O. BOX 5199, Limerick, Pennsylvania, USA.