

Datasheet for 600-401-AL7**CLEC7A Antibody****Overview**

Description:	Anti-CLEC7A (RABBIT) Antibody - 600-401-AL7
Item No.:	600-401-AL7
Size:	100 µg
Applications:	ELISA, IF, IHC, WB
Reactivity:	Human, Mouse, Rat
Host Species:	Rabbit

Product Details

Background:	CLEC7A, also known as dectin-1, is a member of the C-type lectin/C-type lectin-like domain (CTL/CTLD) superfamily and is predominantly expressed on myeloid cells. It is a small glycoprotein type II membrane receptor with an extracellular C-type lectin-like domain fold and a cytoplasmic domain with an immunoreceptor tyrosine-based activation motif (ITAM). CLEC7A functions as a pattern-recognition receptor that recognizes a variety of beta-1,3-linked and beta-1,6-linked glucans from fungi and plants, and in this way plays a role in innate immune response. Upon fungal exposure, CLEC7A activates Syk tyrosine kinase, triggering a massive oxidative burst through the formation of reactive oxygen species.
Synonyms:	CLEC7A Antibody, BGR, CANDF4, DECTIN1, CLECSF12, BGR, UNQ539/PRO1082, C-type lectin domain family 7 member A, Beta-glucan receptor, DC-associated C-type lectin 1
Host Species:	Rabbit
Clonality:	Polyclonal
Format:	IgG

Target Details

Gene Name:	CLEC7A
Reactivity:	Human, Mouse, Rat
Immunogen Type:	Conjugated Peptide

Immunogen:	Anti-CLEC7A antibody was prepared from whole rabbit serum produced by repeated immunizations with a 17 amino acid synthetic peptide near the internal region of human CLEC7A.
Purity/Specificity:	Anti-CLEC7A Antibody was affinity purified from monospecific antiserum by immunoaffinity chromatography. Multiple isoforms of CLEC7A are known to exist.
Relevant Links:	<ul style="list-style-type: none">• UniProtKB - Q9BXN2• GeneID - 64581• NCBI - NP_922938

Application Details

Tested Applications:	ELISA, IF, IHC, WB
Application Note:	Anti-CLEC7A Antibody has been tested for use in ELISA, Western Blotting, Immunohistochemistry and Immunofluorescence. Specific conditions for reactivity should be optimized by the end user. Expect a band at approximately 28 kDa in Western Blots of specific cell lysates and tissues.
Assay Dilutions:	All assays should be optimized by the user. Recommended dilutions (if any) may be listed below.
ELISA:	1:10,000-1:20,000
IF:	20 µg/mL
IHC:	5 µg/mL
WB:	1-2 µg/mL

Formulation

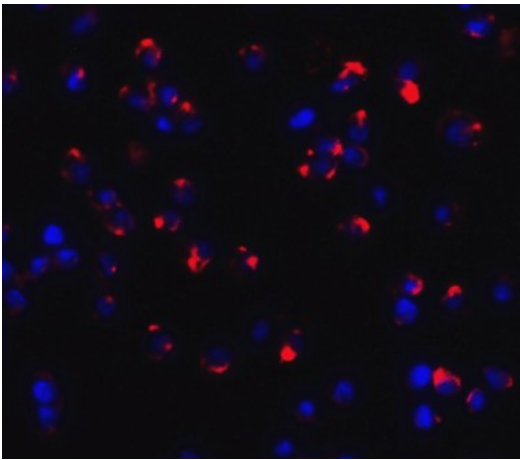
Physical State:	Liquid (sterile filtered)
Concentration:	1.0 mg/mL by UV absorbance at 280 nm
Buffer:	0.01 M Sodium Phosphate, 0.25 M Sodium Chloride, pH 7.2
Preservative:	0.02% (w/v) Sodium Azide
Stabilizer:	None

Shipping & Handling

Shipping Condition:	Dry Ice
----------------------------	---------

Storage Condition:	Store vial at -20° C prior to opening. Aliquot contents and freeze at -20° C or below for extended storage. Avoid cycles of freezing and thawing. Centrifuge product if not completely clear after standing at room temperature. This product is stable for several weeks at 4° C as an undiluted liquid. Dilute only prior to immediate use.
Expiration:	Expiration date is one (1) year from date of receipt.

Images

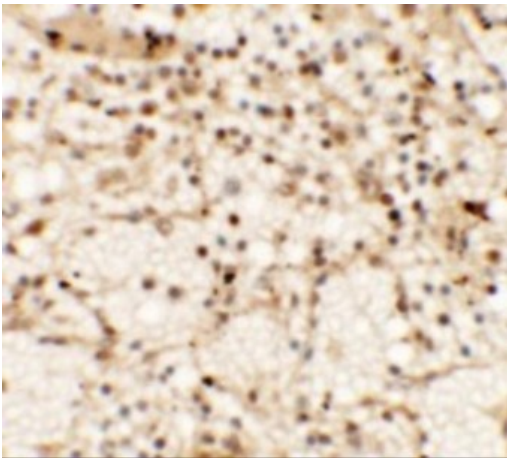


Immunofluorescence Microscopy

Immunofluorescence of CLEC7A.

Cell: Jurkat cells.

Primary Antibody: CLEC7A antibody at 20 µg/mL.

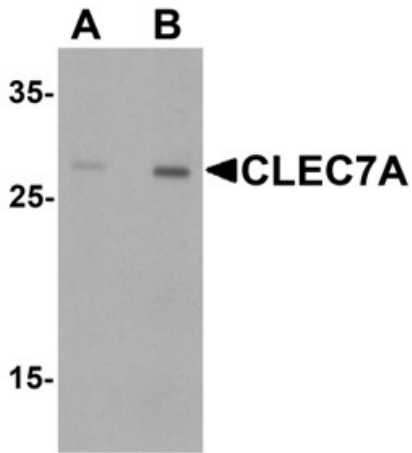


Immunohistochemistry

Immunohistochemistry of CLEC7A.

Tissue: human spleen tissue.

Primary Antibody: CLEC7A antibody at 5 µg/mL.

**Western Blot**

Western blot analysis of CLEC7A.

Load: rat spleen tissue lysate.

Primary Antibody: CLEC7A antibody at (A) 1 and (B) 2 $\mu\text{g}/\text{mL}$.

Disclaimer

This product is for research use only and is not intended for therapeutic or diagnostic applications. Please contact a technical service representative for more information. All products of animal origin manufactured by Rockland Immunochemicals are derived from starting materials of North American origin. Collection was performed in United States Department of Agriculture (USDA) inspected facilities and all materials have been inspected and certified to be free of disease and suitable for exportation. All properties listed are typical characteristics and are not specifications. All suggestions and data are offered in good faith but without guarantee as conditions and methods of use of our products are beyond our control. All claims must be made within 30 days following the date of delivery. The prospective user must determine the suitability of our materials before adopting them on a commercial scale. Suggested uses of our products are not recommendations to use our products in violation of any patent or as a license under any patent of Rockland Immunochemicals, Inc. If you require a commercial license to use this material and do not have one, then return this material, unopened to: Rockland Inc., P.O. BOX 5199, Limerick, Pennsylvania, USA.