

Datasheet for 600-401-AL4

CLAUDIN4 Antibody**Overview**

Description:	Anti-Claudin4 (RABBIT) Antibody - 600-401-AL4
Item No.:	600-401-AL4
Size:	100 µg
Applications:	ELISA, IF, WB
Reactivity:	Human, Mouse, Rat
Host Species:	Rabbit

Product Details

Background:	CLAUDIN4 is an integral membrane protein belonging to the claudin family, a family of cellular adhesion molecules that are components of tight junctions. CLAUDIN4 is a component of tight junction strands and may play a role in internal organ development and function during pre- and postnatal life. The CLAUDIN4 gene is deleted in Williams-Beuren syndrome, a neurodevelopmental disorder affecting multiple systems. CLAUDIN4 is frequently overexpressed in ovarian and other epithelial cancers.
Synonyms:	CLAUDIN4 Antibody, CPER, CPE-R, CPETR, CPETR1, WBSCR8, hCPE-R, CPER, Claudin-4, Clostridium perfringens enterotoxin receptor
Host Species:	Rabbit
Clonality:	Polyclonal
Format:	IgG

Target Details

Gene Name:	CLDN4
Reactivity:	Human, Mouse, Rat
Immunogen Type:	Conjugated Peptide
Immunogen:	Anti-CLAUDIN4 antibody was prepared from whole rabbit serum produced by repeated immunizations with a 17 amino acid synthetic peptide near the C-terminus of human CLAUDIN4.

Purity/Specificity: Anti-CLAUDIN4 Antibody was affinity purified from monospecific antiserum by immunoaffinity chromatography. At least four isoforms of CLAUDIN4 are known to exist; CLAUDIN4 antibody will detect all four isoforms

Relevant Links:

- [UniProtKB - O14493](#)
- [GeneID - 1364](#)
- [NCBI - NP_001296](#)

Application Details

Tested Applications: ELISA, IF, WB

Application Note: Anti-CLAUDIN4 Antibody has been tested for use in ELISA, Western Blotting and Immunofluorescence. Specific conditions for reactivity should be optimized by the end user. Expect a band at approximately 22 kDa in Western Blots of specific cell lysates and tissues.

Assay Dilutions: All assays should be optimized by the user. Recommended dilutions (if any) may be listed below.

ELISA: 1:10,000

IF: 20 µg/mL

WB: 1 µg/mL

Formulation

Physical State: Liquid (sterile filtered)

Concentration: 1 mg/mL by UV absorbance at 280 nm

Buffer: 0.01 M Sodium Phosphate, 0.25 M Sodium Chloride, pH 7.2

Preservative: 0.02% (w/v) Sodium Azide

Stabilizer: None

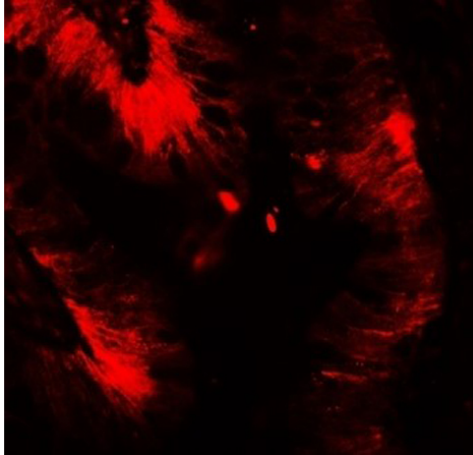
Shipping & Handling

Shipping Condition: Dry Ice

Storage Condition: Store vial at -20° C prior to opening. Aliquot contents and freeze at -20° C or below for extended storage. Avoid cycles of freezing and thawing. Centrifuge product if not completely clear after standing at room temperature. This product is stable for several weeks at 4° C as an undiluted liquid. Dilute only prior to immediate use.

Expiration: Expiration date is one (1) year from date of receipt.

Images

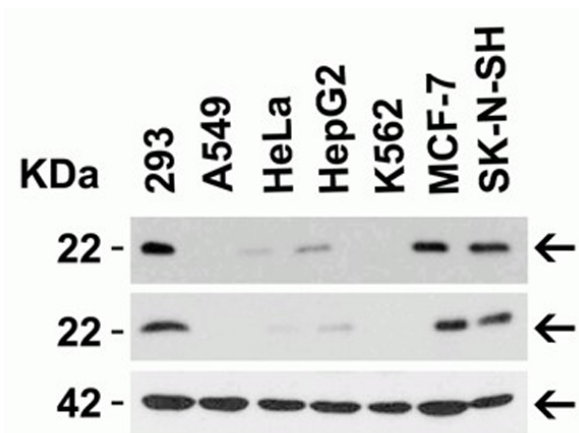


Immunofluorescence Microscopy

Immunofluorescence of Claudin 4.

Tissue: human colon tissue.

Primary Antibody: Claudin 4 antibody at 20µg/mL.



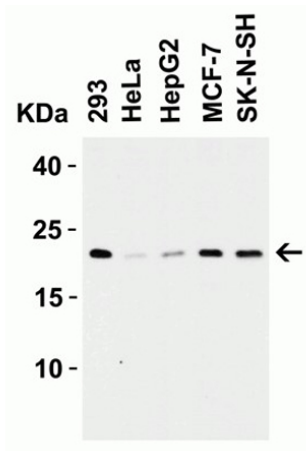
Western Blot

Western blot analysis of Claudin 4.

Load: 15 µg of human lysates per lane.

Primary Antibodies: top: Claudin 4 (p/n 600-401-AL4), middle: Claudin 4, and bottom: beta-actin; at 1µg/mL for 1h at RT in 5% NFDm/TBST.

Secondary: Goat anti-rabbit IgG HRP conjugate at 1:10000 dilution.



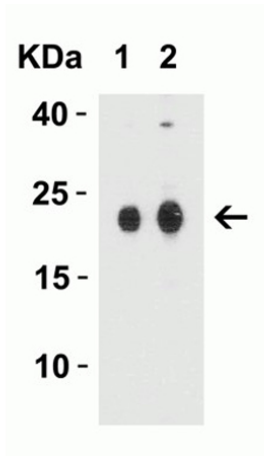
Western Blot

Western Blot analysis of Claudin 4.

Load: 15 µg of human lysates per lane.

Primary Antibodies: Claudin 4 at 1µg/mL for 1h at RT in 5% NFDm/TBST.

Secondary: Goat anti-rabbit IgG HRP conjugate at 1:10000 dilution.

**Western Blot**

Western blot analysis of Claudin 4.

Load: 15 μ g of Human Colon Tissue lysates per lane.

Primary Antibody: Claudin 4 (Lane 1: 1 μ g/mL and Lane 2: 2 μ g/mL) for 1h incubation at RT in 5% NFDN/TBST.

Secondary: Goat anti-rabbit IgG HRP conjugate at 1:10000 dilution.

Disclaimer

This product is for research use only and is not intended for therapeutic or diagnostic applications. Please contact a technical service representative for more information. All products of animal origin manufactured by Rockland Immunochemicals are derived from starting materials of North American origin. Collection was performed in United States Department of Agriculture (USDA) inspected facilities and all materials have been inspected and certified to be free of disease and suitable for exportation. All properties listed are typical characteristics and are not specifications. All suggestions and data are offered in good faith but without guarantee as conditions and methods of use of our products are beyond our control. All claims must be made within 30 days following the date of delivery. The prospective user must determine the suitability of our materials before adopting them on a commercial scale. Suggested uses of our products are not recommendations to use our products in violation of any patent or as a license under any patent of Rockland Immunochemicals, Inc. If you require a commercial license to use this material and do not have one, then return this material, unopened to: Rockland Inc., P.O. BOX 5199, Limerick, Pennsylvania, USA.