

**Datasheet for 600-401-AL1****CISD2 Antibody****Overview**

<b>Description:</b>	Anti-CISD2 (RABBIT) Antibody - 600-401-AL1
<b>Item No.:</b>	600-401-AL1
<b>Size:</b>	100 µg
<b>Applications:</b>	ELISA, IF, IHC, WB
<b>Reactivity:</b>	Human, Mouse, Rat
<b>Host Species:</b>	Rabbit

**Product Details**

<b>Background:</b>	Defects in the CISD2 (CDGSH iron sulfur domain 2) gene are a cause of the neurodegenerative disorder Wolfram syndrome 2. CISD2 is a zinc finger protein that localizes to the endoplasmic reticulum and mitochondria and binds an iron/sulfur cluster. CISD2 interacts with Bcl-2 and can be displaced by the BH3-only protein BIK and contributes to the regulation of BIK-initiated autophagy. CISD2 deficiency in mice causes mitochondrial breakdown accompanied by autophagic cell death as well as the development of premature aging phenotype.
<b>Synonyms:</b>	CISD2 Antibody, ERIS, WFS2, ZCD2, NAF-1, Miner1, CDGSH2, ERIS, CDGSH iron-sulfur domain-containing protein 2, Endoplasmic reticulum intermembrane small protein
<b>Host Species:</b>	Rabbit
<b>Clonality:</b>	Polyclonal
<b>Format:</b>	IgG

**Target Details**

<b>Gene Name:</b>	CISD2
<b>Reactivity:</b>	Human, Mouse, Rat
<b>Immunogen Type:</b>	Conjugated Peptide
<b>Immunogen:</b>	Anti-CISD2 antibody was prepared from whole rabbit serum produced by repeated immunizations with a 15 amino acid peptide near the internal region of human CISD2.

**Purity/Specificity:** Anti-CISD2 Antibody was affinity purified from monospecific antiserum by immunoaffinity chromatography. Cross reactivity with CISD2 from other sources has not been determined.

**Relevant Links:**

- [UniProtKB - Q8N5K1](#)
- [GeneID - 493856](#)
- [NCBI - NP\\_001008389](#)

## Application Details

**Tested Applications:** ELISA, IF, IHC, WB

**Application Note:** Anti-CISD2 Antibody has been tested for use in ELISA, Western Blotting, Immunohistochemistry and Immunofluorescence. Specific conditions for reactivity should be optimized by the end user. Expect a band at approximately 15 kDa in Western Blots of specific cell lysates and tissues.

**Assay Dilutions:** All assays should be optimized by the user. Recommended dilutions (if any) may be listed below.

**ELISA:** User Optimized

**IF:** User Optimized

**IHC:** User Optimized

**WB:** User Optimized

## Formulation

**Physical State:** Liquid (sterile filtered)

**Concentration:** 1 mg/mL by UV absorbance at 280 nm

**Buffer:** 0.01 M Sodium Phosphate, 0.25 M Sodium Chloride, pH 7.2

**Preservative:** 0.02% (w/v) Sodium Azide

**Stabilizer:** None

## Shipping & Handling

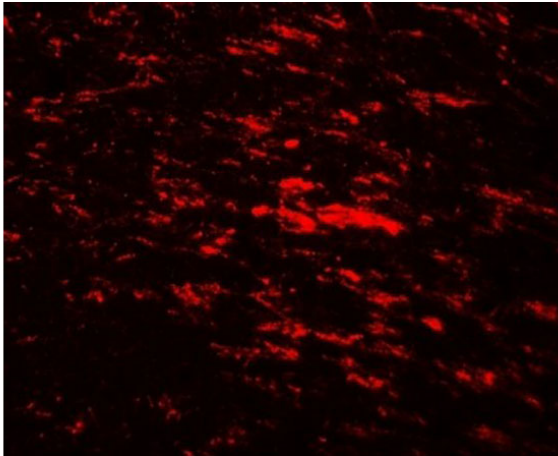
**Shipping Condition:** Dry Ice

**Storage Condition:** Store vial at -20° C prior to opening. Aliquot contents and freeze at -20° C or below for extended storage. Avoid cycles of freezing and thawing. Centrifuge product if not completely clear after standing at room temperature. This product is stable for several weeks at 4° C as an undiluted liquid. Dilute only prior to immediate use.

**Expiration:** Expiration date is one (1) year from date of receipt.

---

## Images

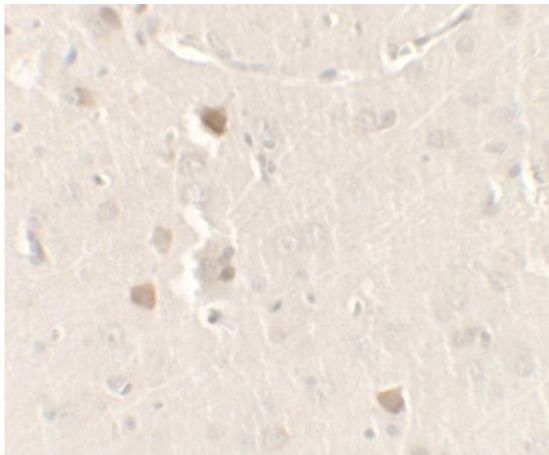


### **Immunofluorescence Microscopy**

Immunofluorescence of CISD2.

Tissue: rat brain tissue.

Primary Antibody: CISD2 antibody at 20  $\mu\text{g}/\text{mL}$ .

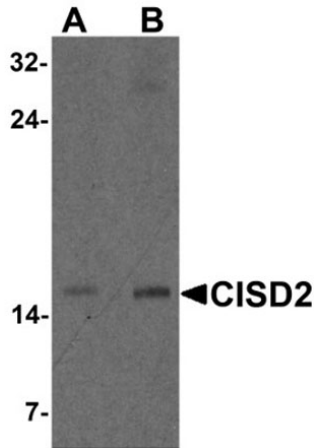


### **Immunohistochemistry**

Immunohistochemistry of CISD2.

Tissue: rat brain tissue.

Primary Antibody: CISD2 antibody at 2.5  $\mu\text{g}/\text{mL}$ .

**Western Blot**

Western blot of CISD2.

Load: rat brain tissue lysate.

Primary Antibody: CISD2 antibody at (A) 1 and (B) 2  $\mu\text{g/mL}$ .**Disclaimer**

This product is for research use only and is not intended for therapeutic or diagnostic applications. Please contact a technical service representative for more information. All products of animal origin manufactured by Rockland Immunochemicals are derived from starting materials of North American origin. Collection was performed in United States Department of Agriculture (USDA) inspected facilities and all materials have been inspected and certified to be free of disease and suitable for exportation. All properties listed are typical characteristics and are not specifications. All suggestions and data are offered in good faith but without guarantee as conditions and methods of use of our products are beyond our control. All claims must be made within 30 days following the date of delivery. The prospective user must determine the suitability of our materials before adopting them on a commercial scale. Suggested uses of our products are not recommendations to use our products in violation of any patent or as a license under any patent of Rockland Immunochemicals, Inc. If you require a commercial license to use this material and do not have one, then return this material, unopened to: Rockland Inc., P.O. BOX 5199, Limerick, Pennsylvania, USA.