

Datasheet for 600-401-AK2**cIAP Antibody****Overview**

Description:	Anti-cIAP (RABBIT) Antibody - 600-401-AK2
Item No.:	600-401-AK2
Size:	100 µg
Applications:	ELISA, IF, IHC, WB
Reactivity:	Human, Mouse
Host Species:	Rabbit

Product Details

Background:	Apoptosis, or programmed cell death, is related to many diseases, such as cancer. Apoptosis is triggered by a variety of stimuli including members in the TNF family and can be prevented by the inhibitor of apoptosis (IAP) proteins. IAP proteins form a conserved gene family that binds to and inhibits cell death proteases. The two isoforms of c-IAP (c-IAP1 and c-IAP2) are structurally related to XIAP, containing 3 baculoviral IAP repeat (BIR) motifs that are essential and sufficient for the binding and inhibition of caspases-3, -7. The c-IAPs can associate with the death receptor TNF-R2, and mediate the ubiquitination of TRAF2 following the binding of TNF-α by its receptor. Omi, a negative regulator of c-IAP, inhibits its activity by catalytically cleaving c-IAP. Another negative regulator, Smac/DIABLO, acts by enhancing the auto-ubiquitination activity of c-IAP.
Synonyms:	cIAP Antibody, API1, MIHB, HIAP2, RNF48, cIAP1, Hiap-2, c-IAP1, API1, IAP2, Baculoviral IAP repeat-containing protein 2, C-IAP1, IAP-2
Host Species:	Rabbit
Clonality:	Polyclonal
Format:	IgG

Target Details

Gene Name:	BIRC2
Reactivity:	Human, Mouse
Immunogen Type:	Conjugated Peptide

Immunogen:	Anti-c-IAP antibody was prepared from whole rabbit serum produced by repeated immunizations with a synthetic peptide corresponding to 14 amino acids at the C-terminus of human c-IAP1 c-IAP antibody detects both c-IAP1 and c-IAP2.
Purity/Specificity:	Anti-clAP Antibody was affinity purified from monospecific antiserum by immunoaffinity chromatography. Cross reactivity with clAP from other sources has not been determined.
Relevant Links:	<ul style="list-style-type: none">• UniProtKB - Q13490• GeneID - 329• NCBI - NP_001157

Application Details

Tested Applications:	ELISA, IF, IHC, WB
Application Note:	Anti-clAP Antibody has been tested for use in ELISA, Western Blotting, Immunohistochemistry and Immunofluorescence. Specific conditions for reactivity should be optimized by the end user. Expect a band at approximately 70 kDa in Western Blots of specific cell lysates and tissues.
Assay Dilutions:	All assays should be optimized by the user. Recommended dilutions (if any) may be listed below.
ELISA:	1:10,000 - 1:40,000
IF:	20 µg/mL
IHC:	10 µg/mL
WB:	1-4 µg/mL

Formulation

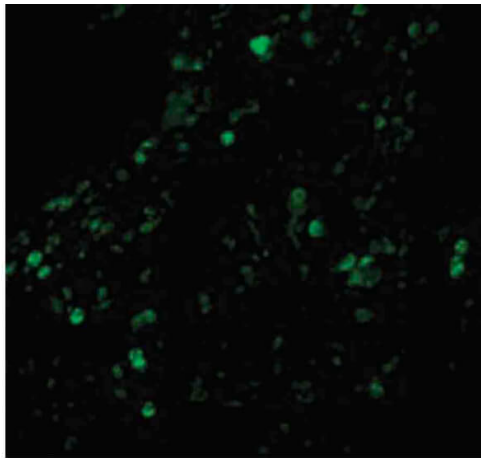
Physical State:	Liquid (sterile filtered)
Concentration:	1 mg/mL by UV absorbance at 280 nm
Buffer:	0.01 M Sodium Phosphate, 0.25 M Sodium Chloride, pH 7.2
Preservative:	0.02% (w/v) Sodium Azide
Stabilizer:	None

Shipping & Handling

Shipping Condition:	Dry Ice
----------------------------	---------

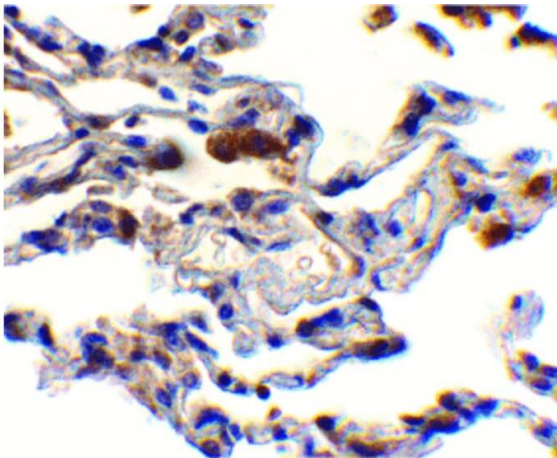
Storage Condition:	Store vial at -20° C prior to opening. Aliquot contents and freeze at -20° C or below for extended storage. Avoid cycles of freezing and thawing. Centrifuge product if not completely clear after standing at room temperature. This product is stable for several weeks at 4° C as an undiluted liquid. Dilute only prior to immediate use.
Expiration:	Expiration date is one (1) year from date of receipt.

Images



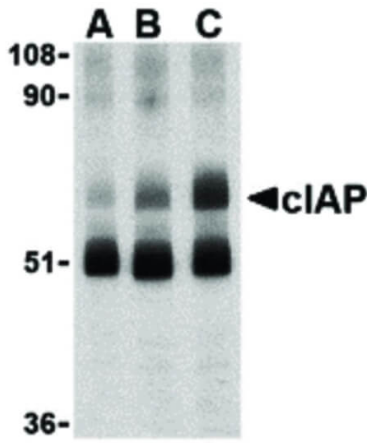
Immunofluorescence Microscopy

Immunofluorescence Microscopy of cIAP antibody. Tissue: human breast carcinoma. Fixation: 0.5% PFA. Antigen retrieval: not required. Primary antibody: cIAP antibody at 20 µg/mL for 1 h at RT. Secondary antibody: Fluorescein rabbit secondary antibody at 1:10,000 for 45 min at RT. Localization: cIAP is nuclear and cytoplasmic. Staining: cIAP as green fluorescent signal.



Immunohistochemistry

Immunohistochemistry of cIAP antibody. Cell Type: human lung cells. Fixation: formalin fixed paraffin embedded. Antigen retrieval: not required. Primary antibody: cIAP antibody at 10 µg/mL for 1 h at RT. Secondary antibody: Peroxidase rabbit secondary antibody at 1:10,000 for 45 min at RT. Localization: cIAP is nuclear and cytoplasmic. Staining: cIAP is stained with tuidine blue.

**Western Blot**

Western Blot of c-IAP antibody in human lung lysate. Lane A: c-IAP antibody at 1 $\mu\text{g}/\text{mL}$. Lane B: c-IAP antibody at 2 $\mu\text{g}/\text{mL}$. Lane C: c-IAP antibody at 4 $\mu\text{g}/\text{mL}$. Load: 35 μg per lane. Primary antibody: c-IAP antibody at designated concentrations for overnight at 4°C. Secondary antibody: Peroxidase rabbit secondary antibody at 1:10,000 for 45 min at RT. Block: 5% BLOTTO overnight at 4°C. Predicted/Observed size: 70 kDa, 70 kDa for c-IAP. Other band(s): c-IAP splice variants and isoforms.

Disclaimer

This product is for research use only and is not intended for therapeutic or diagnostic applications. Please contact a technical service representative for more information. All products of animal origin manufactured by Rockland Immunochemicals are derived from starting materials of North American origin. Collection was performed in United States Department of Agriculture (USDA) inspected facilities and all materials have been inspected and certified to be free of disease and suitable for exportation. All properties listed are typical characteristics and are not specifications. All suggestions and data are offered in good faith but without guarantee as conditions and methods of use of our products are beyond our control. All claims must be made within 30 days following the date of delivery. The prospective user must determine the suitability of our materials before adopting them on a commercial scale. Suggested uses of our products are not recommendations to use our products in violation of any patent or as a license under any patent of Rockland Immunochemicals, Inc. If you require a commercial license to use this material and do not have one, then return this material, unopened to: Rockland Inc., P.O. BOX 5199, Limerick, Pennsylvania, USA.