

Datasheet for 600-401-AK1**CHORDC1 Antibody****Overview**

Description:	Anti-CHORDC1 (RABBIT) Antibody - 600-401-AK1
Item No.:	600-401-AK1
Size:	100 µg
Applications:	ELISA, IF, IHC, WB
Reactivity:	Human, Mouse, Rat
Host Species:	Rabbit

Product Details

Background:	The cysteine and histidine-rich domain (CHORD)-containing protein (CHORDC1) is a member of a highly conserved protein family that contains the plant protein RAR1 and the mammalian protein melusin. In mammals, CHORDC1 is an ADP-dependent HSP90-interacting protein, and this interaction is dependent on the ability of HSP90 to bind nucleotides. Recent experiments indicate that CHORDC1 mRNA is diurnally regulated in mouse hypothalamus, and that this regulation alters during development, suggesting that CHORDC1 may play a role in circadian mechanisms in the mammalian brain.
Synonyms:	CHORDC1 Antibody, CHP1, CHP1, Cysteine and histidine-rich domain-containing protein 1, CHORD domain-containing protein 1, CHORD-containing protein 1
Host Species:	Rabbit
Clonality:	Polyclonal
Format:	IgG

Target Details

Gene Name:	CHORDC1
Reactivity:	Human, Mouse, Rat
Immunogen Type:	Conjugated Peptide
Immunogen:	Anti-CHORDC1 antibody was prepared from whole rabbit serum produced by repeated immunizations with a 21 amino acid synthetic peptide near the N-terminus of human CHORDC1.

Purity/Specificity: Anti-CHORDC1 Antibody was affinity purified from monospecific antiserum by immunoaffinity chromatography. Cross reactivity with CHORDC1 from other sources has not been determined.

Relevant Links:

- [UniProtKB - Q9UHD1](#)
- [GeneID - 26973](#)
- [NCBI - NP_036256](#)

Application Details

Tested Applications: ELISA, IF, IHC, WB

Application Note: Anti-CHORDC1 Antibody has been tested for use in ELISA, Western Blotting, Immunocytochemistry and Immunofluorescence. Specific conditions for reactivity should be optimized by the end user. Expect a band at approximately 37 kDa in Western Blots of specific cell lysates and tissues.

Assay Dilutions: All assays should be optimized by the user. Recommended dilutions (if any) may be listed below.

ELISA: 1:10,000 - 1:20,000

IF: 20 µg/mL

WB: 1-2 µg/mL

Formulation

Physical State: Liquid (sterile filtered)

Concentration: 1 mg/mL by UV absorbance at 280 nm

Buffer: 0.01 M Sodium Phosphate, 0.25 M Sodium Chloride, pH 7.2

Preservative: 0.02% (w/v) Sodium Azide

Stabilizer: None

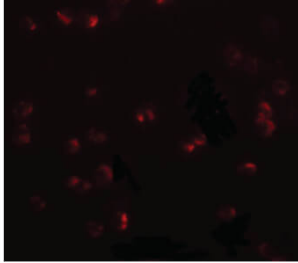
Shipping & Handling

Shipping Condition: Dry Ice

Storage Condition: Store vial at -20° C prior to opening. Aliquot contents and freeze at -20° C or below for extended storage. Avoid cycles of freezing and thawing. Centrifuge product if not completely clear after standing at room temperature. This product is stable for several weeks at 4° C as an undiluted liquid. Dilute only prior to immediate use.

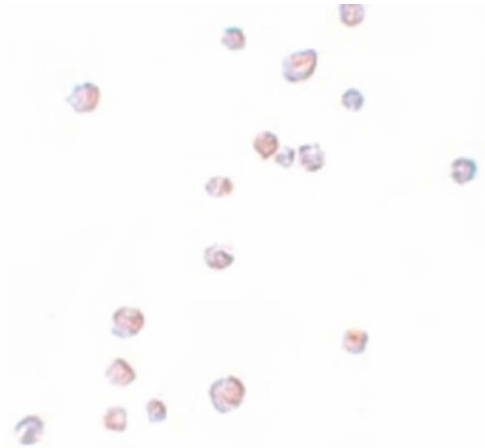
Expiration: Expiration date is one (1) year from date of receipt.

Images



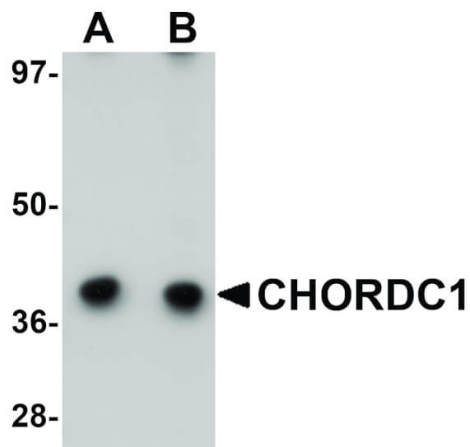
Immunofluorescence Microscopy

Immunofluorescence Microscopy of CHORDC1 antibody.
Tissue: 3T3 cells. Fixation: 0.5% PFA. Antigen retrieval: not required. Primary antibody: CHORDC1 antibody at 20 $\mu\text{g}/\text{mL}$ for 1 h at RT. Secondary antibody: Fluorescein rabbit secondary antibody at 1:10,000 for 45 min at RT. Staining: CHORDC1 as red fluorescent signal.



Immunohistochemistry

Immunocytochemistry of CHORDC1 antibody. Tissue: 293 cells. Fixation: formalin fixed paraffin embedded. Antigen retrieval: not required. Primary antibody: CHORDC1 antibody at 2.5 $\mu\text{g}/\text{mL}$ for 1 h at RT. Secondary antibody: Peroxidase rabbit secondary antibody at 1:10,000 for 45 min at RT. Staining: CHORDC1 as precipitated pink signal with blue nuclear counterstain.



Western Blot

Western Blot of CHORDC1 antibody. Lane 1: 293 cell lysate with CHORDC1 antibody at 1 $\mu\text{g}/\text{mL}$. Lane 2: 293 cell lysate with CHORDC1 antibody at 2 $\mu\text{g}/\text{mL}$. Secondary antibody: Peroxidase rabbit secondary antibody at 1:10,000 for 45 min at RT. Block: 5% BLOTTO overnight at 4°C. Predicted/Observed size: 37 kDa, 38 kDa for CHORDC1. Other band(s): CHORDC1 splice variants and isoforms.

Disclaimer

This product is for research use only and is not intended for therapeutic or diagnostic applications. Please contact a technical service representative for more information. All products of animal origin manufactured by Rockland Immunochemicals are derived from starting materials of North American origin. Collection was performed in United States Department of Agriculture (USDA) inspected facilities and all materials have been inspected and certified to be free of disease and suitable for exportation. All properties listed are typical characteristics and are not specifications. All suggestions and data are offered in good faith but without guarantee as conditions and methods of use of our products are beyond our control. All claims must be made within 30 days following the date of delivery. The prospective user must determine the suitability of our materials before adopting them on a commercial scale. Suggested uses of our products are not recommendations to use our products in violation of any patent or as a license under any patent of Rockland Immunochemicals, Inc. If you require a commercial license to use this material and do not have one, then return this material, unopened to: Rockland Inc., P.O. BOX 5199, Limerick, Pennsylvania, USA.