

Datasheet for 600-401-AH3**CEACAM5 Antibody****Overview**

Description:	Anti-CEACAM5 (RABBIT) Antibody - 600-401-AH3
Item No.:	600-401-AH3
Size:	100 µg
Applications:	ELISA, WB
Reactivity:	Human, Mouse, Rat
Host Species:	Rabbit

Product Details

Background:	CEACAM5 is a member of the carcinoembryonic antigen (CEA) family, which belongs to the immunoglobulin superfamily (1,2). CEACAM proteins are involved in cell-cell recognition and modulate cellular processes that range from the shaping of tissue architecture and neovascularization to the regulation of insulin homeostasis and T-cell proliferation (2). CEACAM5 has been shown to be overexpressed in a majority of carcinomas and has been suggested to be a intercellular adhesion molecule involved in cancer invasion and metastasis (3).
Synonyms:	CEACAM5 Antibody , CEA, CD66e, CEA, Carcinoembryonic antigen-related cell adhesion molecule 5, Carcinoembryonic antigen
Host Species:	Rabbit
Clonality:	Polyclonal
Format:	IgG

Target Details

Gene Name:	CEACAM5
Reactivity:	Human, Mouse, Rat
Immunogen Type:	Conjugated Peptide
Immunogen:	Anti-CEACAM5 antibody was prepared from whole rabbit serum produced by repeated immunizations with a 15 amino acid peptide near the internal region of human CEACAM5

Purity/Specificity: Anti-CEACAM5 Antibody was affinity purified from monospecific antiserum by immunoaffinity chromatography. CEACAM5 antibody is human, mouse and rat reactive. CEACAM5 antibody is predicted to not cross-react with other CEACAM protein family members.

Relevant Links:

- [UniProtKB - P06731](#)
- [GeneID - 1048](#)
- [NCBI - NP_004354](#)

Application Details

Tested Applications: ELISA, WB

Application Note: Anti-CEACAM5 Antibody has been tested for use in ELISA and Western Blotting. Specific conditions for reactivity should be optimized by the end user. Expect a band at approximately 77 kDa in Western Blots of specific cell lysates and tissues.

Assay Dilutions: All assays should be optimized by the user. Recommended dilutions (if any) may be listed below.

ELISA: User Optimized

WB: User Optimized

Formulation

Physical State: Liquid (sterile filtered)

Concentration: 1 mg/mL by UV absorbance at 280 nm

Buffer: 0.01 M Sodium Phosphate, 0.25 M Sodium Chloride, pH 7.2

Preservative: 0.02% (w/v) Sodium Azide

Stabilizer: None

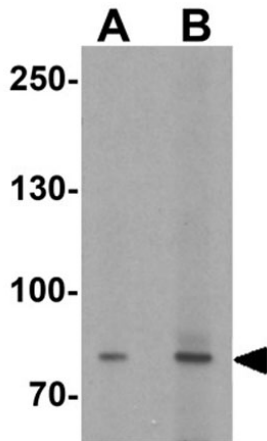
Shipping & Handling

Shipping Condition: Dry Ice

Storage Condition: Store vial at -20° C prior to opening. Aliquot contents and freeze at -20° C or below for extended storage. Avoid cycles of freezing and thawing. Centrifuge product if not completely clear after standing at room temperature. This product is stable for several weeks at 4° C as an undiluted liquid. Dilute only prior to immediate use.

Expiration: Expiration date is one (1) year from date of receipt.

Images

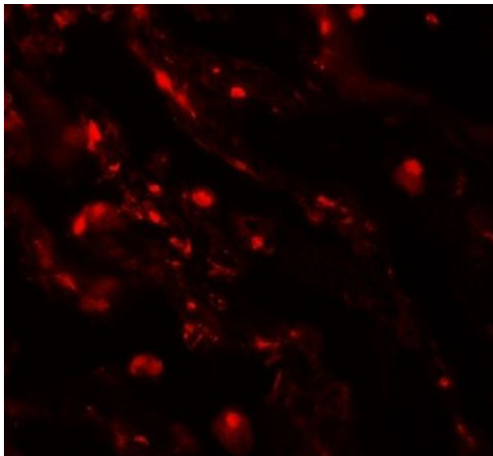


Western Blot

Western blot of CEACAM5.

Load: rat lung tissue lysate.

Primary Antibody: CEACAM5 antibody at (A) 1 and (B) 2 $\mu\text{g/ml}$.



Immunofluorescence Microscopy

Immunofluorescence of CEACAM5.

Tissue: human lung tissue.

Primary Antibody: CEACAM5 antibody at 20 $\mu\text{g/mL}$.

Disclaimer

This product is for research use only and is not intended for therapeutic or diagnostic applications. Please contact a technical service representative for more information. All products of animal origin manufactured by Rockland Immunochemicals are derived from starting materials of North American origin. Collection was performed in United States Department of Agriculture (USDA) inspected facilities and all materials have been inspected and certified to be free of disease and suitable for exportation. All properties listed are typical characteristics and are not specifications. All suggestions and data are offered in good faith but without guarantee as conditions and methods of use of our products are beyond our control. All claims must be made within 30 days following the date of delivery. The prospective user must determine the suitability of our materials before adopting them on a commercial scale. Suggested uses of our products are not recommendations to use our products in violation of any patent or as a license under any patent of Rockland Immunochemicals, Inc. If you require a commercial license to use this material and do not have one, then return this material, unopened to: Rockland Inc., P.O. BOX 5199, Limerick, Pennsylvania, USA.