

Datasheet for 600-401-AH1**CDNF Antibody****Overview**

Description:	Anti-CDNF (RABBIT) Antibody - 600-401-AH1
Item No.:	600-401-AH1
Size:	100 µg
Applications:	ELISA, IF, IHC, WB
Reactivity:	Human, Mouse, Rat
Host Species:	Rabbit

Product Details

Background:	The conserved dopamine neurotrophic factor (CDNF) is a neurotrophic factor for dopaminergic neurons and highly homologous to the mesencephalic-astrocyte-derived neuro-trophic factor. Somewhat surprisingly, CDCF is expressed at higher levels in tissues such as heart, skeletal muscle and testes than in brain. Similar to the glial cell line-derived neurotrophic factor (GDNF), CDNF can prevent the 6-hydroxylamine (6-OHDA)-induced degeneration of dopaminergic neurons in a rat model of Parkinson's disease. Furthermore, CDNF was able to restore the dopaminergic function and prevent the degeneration of dopaminergic neurons in the substantia nigra, suggesting that CDNF might be suitable for the treatment of Parkinson's disease. At least two isoforms of CDNF are known to exist.
Synonyms:	CDNF Antibody, ARMETL1, Cerebral dopamine neurotrophic factor, ARMET-like protein 1, Conserved dopamine neurotrophic factor
Host Species:	Rabbit
Clonality:	Polyclonal
Format:	IgG

Target Details

Gene Name:	CDNF
Reactivity:	Human, Mouse, Rat
Immunogen Type:	Conjugated Peptide

Immunogen:	Anti-CDNF antibody was prepared from whole rabbit serum produced by repeated immunizations with a 12 amino acid synthetic peptide from near the N-terminus of human CDNF.
Purity/Specificity:	Anti-CDNF Antibody was affinity purified from monospecific antiserum by immunoaffinity chromatography. This antibody does not cross-react with MANF.
Relevant Links:	<ul style="list-style-type: none">• UniProtKB - Q49AH0• GeneID - 441549• NCBI - NP_001025125.2

Application Details

Tested Applications:	ELISA, IF, IHC, WB
Application Note:	Anti-CDNF Antibody has been tested for use in ELISA, Western Blotting, Immunohistochemistry and Immunofluorescence. Specific conditions for reactivity should be optimized by the end user. Expect a band at approximately 21 kDa in Western Blots of specific cell lysates and tissues.
Assay Dilutions:	All assays should be optimized by the user. Recommended dilutions (if any) may be listed below.
ELISA:	1:10,000
IF:	20 µg/mL
IHC:	5 µg/mL
WB:	1 µg/mL

Formulation

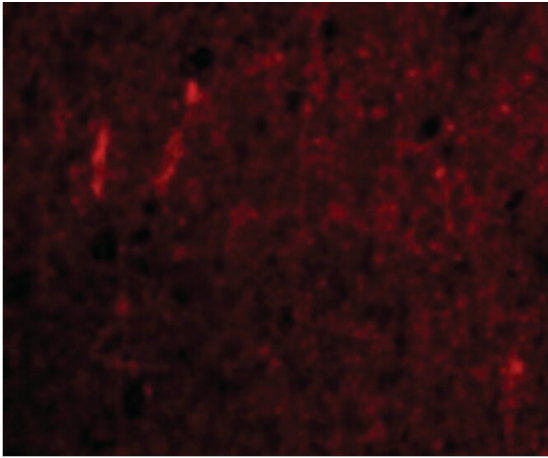
Physical State:	Liquid (sterile filtered)
Concentration:	1 mg/mL by UV absorbance at 280 nm
Buffer:	0.01 M Sodium Phosphate, 0.25 M Sodium Chloride, pH 7.2
Preservative:	0.02% (w/v) Sodium Azide
Stabilizer:	None

Shipping & Handling

Shipping Condition:	Wet Ice
----------------------------	---------

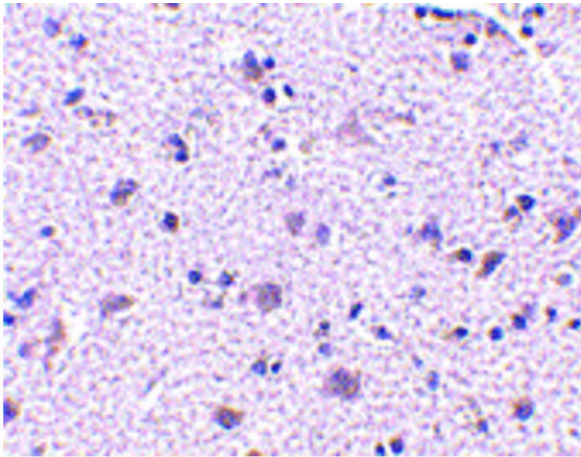
Storage Condition:	Antibody can be stored at 4°C up to one year. Antibodies should not be exposed to prolonged high temperatures.
Expiration:	Expiration date is one (1) year from date of receipt.

Images



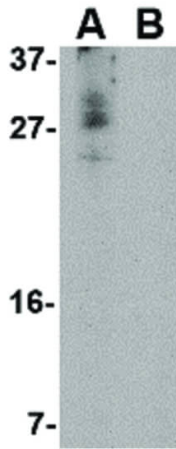
Immunofluorescence Microscopy

Immunofluorescence Microscopy of CDNF antibody. Tissue: human brain cells. Fixation: 0.5% PFA. Antigen retrieval: not required. Primary antibody: CDNF antibody at 20 µg/mL for 1 h at RT. Secondary antibody: Fluorescein rabbit secondary antibody at 1:10,000 for 45 min at RT. Staining: CDNF as a red fluorescent signal.



Immunohistochemistry

Immunohistochemistry of CDNF antibody. Tissue: human brain tissue. Fixation: formalin fixed paraffin embedded. Antigen retrieval: not required. Primary antibody: CDNF antibody at 5 µg/mL for 1 h at RT. Secondary antibody: Peroxidase rabbit secondary antibody at 1:10,000 for 45 min at RT. Localization: CDNF is nuclear and occasionally cytoplasmic. Staining: CDNF as precipitated red signal with hematoxylin purple nuclear counterstain.

**Western Blot**

Western Blot of CDNF antibody. Lane A: A-20 cell lysate in the absence of blocking peptide at 1 $\mu\text{g}/\text{mL}$. Lane B: A-20 cell lysate in the presence of blocking peptide at 1 $\mu\text{g}/\text{mL}$. Load: 35 μg per lane. Secondary antibody: Peroxidase rabbit secondary antibody at 1:10,000 for 45 min at RT. Block: 5% BLOTTO overnight at 4°C. Predicted/Observed size: 20.9 kDa, ~27 kDa for CDNF.

Disclaimer

This product is for research use only and is not intended for therapeutic or diagnostic applications. Please contact a technical service representative for more information. All products of animal origin manufactured by Rockland Immunochemicals are derived from starting materials of North American origin. Collection was performed in United States Department of Agriculture (USDA) inspected facilities and all materials have been inspected and certified to be free of disease and suitable for exportation. All properties listed are typical characteristics and are not specifications. All suggestions and data are offered in good faith but without guarantee as conditions and methods of use of our products are beyond our control. All claims must be made within 30 days following the date of delivery. The prospective user must determine the suitability of our materials before adopting them on a commercial scale. Suggested uses of our products are not recommendations to use our products in violation of any patent or as a license under any patent of Rockland Immunochemicals, Inc. If you require a commercial license to use this material and do not have one, then return this material, unopened to: Rockland Inc., P.O. BOX 5199, Limerick, Pennsylvania, USA.