

Datasheet for 600-401-AG7**CD160 Antibody****Overview**

Description:	Anti-CD160 (RABBIT) Antibody - 600-401-AG7
Item No.:	600-401-AG7
Size:	100 µg
Applications:	ELISA, IF, WB
Reactivity:	Human, Mouse
Host Species:	Rabbit

Product Details

Background:	CD160, also known as BY55, is a lipid-anchored cell membrane glycoprotein that contains one immunoglobulin-like domain (1). It is expressed in small intestine, spleen and functional NK and T cytotoxic lymphocytes (1,2). CD160 exists as a disulfide-linked homomultimer that functions as a receptor for MHC (major histocompatibility complex) molecules and is thought to regulate the function of NK cells (2,3). Additionally, CD160 interacts with TNFRSF14 and, via this interaction, is able to negatively regulate CD4+ T cell activation, indicating a role in immune system regulation (4).
Synonyms:	CD160 Antibody , NK1, BY55, NK28, CD160 antigen, Natural killer cell receptor BY55
Host Species:	Rabbit
Clonality:	Polyclonal
Format:	IgG

Target Details

Gene Name:	CD160
Reactivity:	Human, Mouse
Immunogen Type:	Conjugated Peptide
Immunogen:	Anti-CD160 antibody was prepared from whole rabbit serum produced by repeated immunizations with a 17 amino acid peptide near the internal region of human CD160.

Purity/Specificity: Anti-CD160 Antibody was affinity purified from monospecific antiserum by immunoaffinity chromatography. CD160 antibody is human and mouse reactive. Multiple isoforms of CD160 are known to exist.

Relevant Links:

- [UniProtKB - O95971](#)
- [GeneID - 11126](#)
- [NCBI - NP_008984](#)

Application Details

Tested Applications: ELISA, IF, WB

Application Note: Anti-CD160 Antibody has been tested for use in ELISA, Western Blotting and Immunofluorescence. Specific conditions for reactivity should be optimized by the end user. Expect a band at approximately 20 kDa in Western Blots of specific cell lysates and tissues.

Assay Dilutions: All assays should be optimized by the user. Recommended dilutions (if any) may be listed below.

ELISA: User Optimized

IHC: User Optimized

WB: User Optimized

Formulation

Physical State: Liquid (sterile filtered)

Concentration: 1 mg/mL by UV absorbance at 280 nm

Buffer: 0.01 M Sodium Phosphate, 0.25 M Sodium Chloride, pH 7.2

Preservative: 0.02% (w/v) Sodium Azide

Stabilizer: None

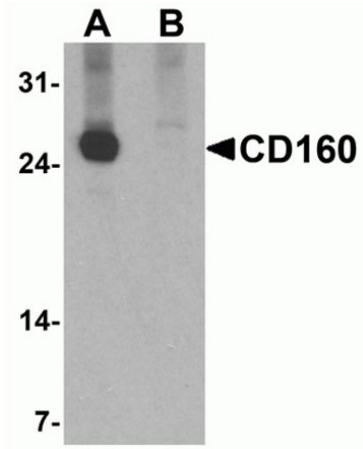
Shipping & Handling

Shipping Condition: Dry Ice

Storage Condition: Store vial at -20° C prior to opening. Aliquot contents and freeze at -20° C or below for extended storage. Avoid cycles of freezing and thawing. Centrifuge product if not completely clear after standing at room temperature. This product is stable for several weeks at 4° C as an undiluted liquid. Dilute only prior to immediate use.

Expiration: Expiration date is one (1) year from date of receipt.

Images

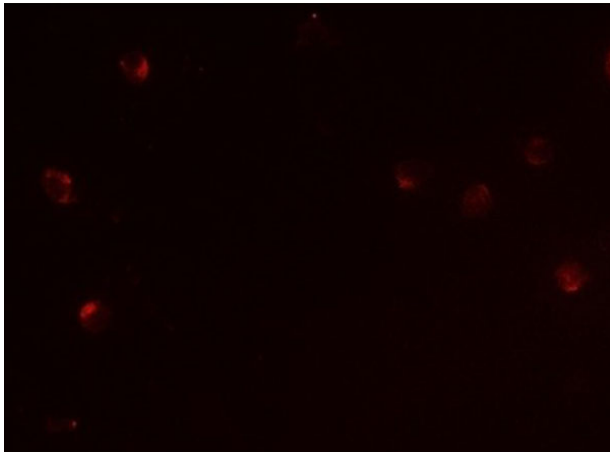


Western Blot

Western blot of CD160.

Load: K562 cell lysate.

Primary Antibody: CD160 antibody at 1 $\mu\text{g}/\text{ml}$ in (A) the absence and (B) the presence of blocking peptide.



Immunofluorescence Microscopy

Immunofluorescence of CD160.

Tissue: Jurkat cells tissue.

Primary Antibody: CD160 antibody at 5 $\mu\text{g}/\text{mL}$.

Disclaimer

This product is for research use only and is not intended for therapeutic or diagnostic applications. Please contact a technical service representative for more information. All products of animal origin manufactured by Rockland Immunochemicals are derived from starting materials of North American origin. Collection was performed in United States Department of Agriculture (USDA) inspected facilities and all materials have been inspected and certified to be free of disease and suitable for exportation. All properties listed are typical characteristics and are not specifications. All suggestions and data are offered in good faith but without guarantee as conditions and methods of use of our products are beyond our control. All claims must be made within 30 days following the date of delivery. The prospective user must determine the suitability of our materials before adopting them on a commercial scale. Suggested uses of our products are not recommendations to use our products in violation of any patent or as a license under any patent of Rockland Immunochemicals, Inc. If you require a commercial license to use this material and do not have one, then return this material, unopened to: Rockland Inc., P.O. BOX 5199, Limerick, Pennsylvania, USA.