

**Datasheet for 600-401-AG2**  
**CCP110 Antibody****Overview**

<b>Description:</b>	Anti-CCP110 (RABBIT) Antibody - 600-401-AG2
<b>Item No.:</b>	600-401-AG2
<b>Size:</b>	100 µg
<b>Applications:</b>	ELISA, IF, IHC, WB
<b>Reactivity:</b>	Human, Mouse, Rat
<b>Host Species:</b>	Rabbit

**Product Details**

<b>Background:</b>	CCP110 is a centrosomal protein required for the centrosome to function as a microtubule organizing center and plays an essential role in centrosome duplication. It is a target of cyclin-dependent kinases (CDKs); disruption of CCP110 phosphorylation leads to unscheduled centrosome separation and polyploidy. CCP110 is also a target of SCF (Cyclin F) ubiquitin ligase complex, leading to its degradation, suggesting that this complex controls centrosome homeostasis and mitotic fidelity through CCP110 degradation. The centriolar kinesin Kif24 also interacts with CP110 and remodel microtubules and regulate ciliogenesis.
<b>Synonyms:</b>	CCP110 Antibody, CP110, Cep110, CEP110, CP110, KIAA0419, Centriolar coiled-coil protein of 110 kDa, Centrosomal protein of 110 kDa
<b>Host Species:</b>	Rabbit
<b>Clonality:</b>	Polyclonal
<b>Format:</b>	IgG

**Target Details**

<b>Gene Name:</b>	CCP110
<b>Reactivity:</b>	Human, Mouse, Rat
<b>Immunogen Type:</b>	Conjugated Peptide
<b>Immunogen:</b>	Anti-CCP110 antibody was prepared from whole rabbit serum produced by repeated immunizations with a 17 amino acid synthetic peptide near the C-terminus of human CCP110.

**Purity/Specificity:** Anti-CCP110 Antibody was affinity purified from monospecific antiserum by immunoaffinity chromatography. Two isoforms of CCP110 are known to exist; this antibody will only detect the longer isoform

**Relevant Links:**

- [UniProtKB - O43303](#)
- [GeneID - 9738](#)
- [NCBI - NP\\_001185951](#)

## Application Details

**Tested Applications:** ELISA, IF, IHC, WB

**Application Note:** Anti-CCP110 Antibody has been tested for use in ELISA, Western Blotting, Immunohistochemistry and Immunofluorescence. Specific conditions for reactivity should be optimized by the end user. Expect a band at approximately 113 kDa in Western Blots of specific cell lysates and tissues.

**Assay Dilutions:** All assays should be optimized by the user. Recommended dilutions (if any) may be listed below.

**ELISA:** 1:10,000 - 1:20,000

**IF:** 5 µg/mL

**IHC:** 5 µg/mL

**WB:** 1-2 µg/mL

## Formulation

**Physical State:** Liquid (sterile filtered)

**Concentration:** 1 mg/mL by UV absorbance at 280 nm

**Buffer:** 0.01 M Sodium Phosphate, 0.25 M Sodium Chloride, pH 7.2

**Preservative:** 0.02% (w/v) Sodium Azide

**Stabilizer:** None

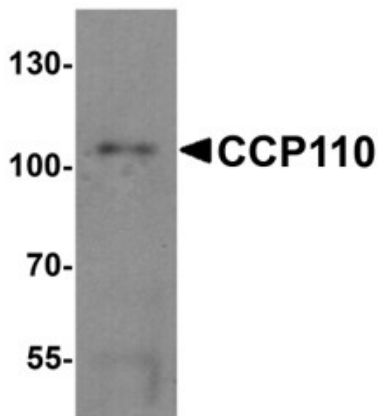
## Shipping & Handling

**Shipping Condition:** Dry Ice

**Storage Condition:** Store vial at -20° C prior to opening. Aliquot contents and freeze at -20° C or below for extended storage. Avoid cycles of freezing and thawing. Centrifuge product if not completely clear after standing at room temperature. This product is stable for several weeks at 4° C as an undiluted liquid. Dilute only prior to immediate use.

**Expiration:** Expiration date is one (1) year from date of receipt.

## Images

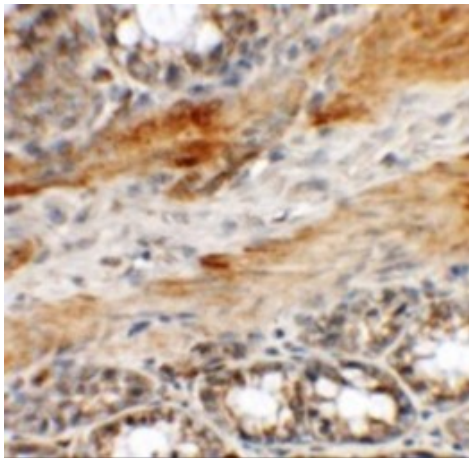


### Western Blot

Western blot analysis of CCP110.

Load: human colon tissue lysate.

Primary Antibody: CCP110 antibody at 1 µg/mL.

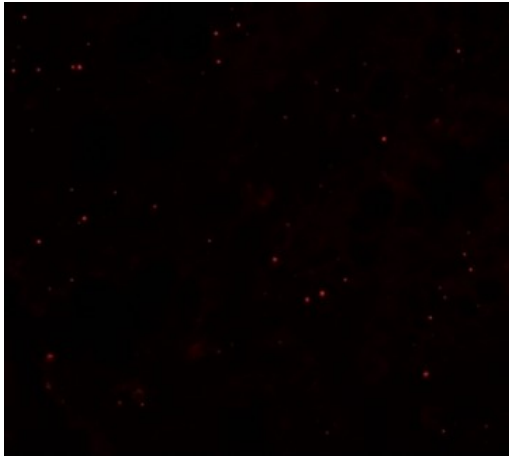


### Immunohistochemistry

Immunohistochemistry of CCP110.

Tissue: rat colon tissue.

Primary Antibody: CCP110 antibody at 5 µg/mL.

**Immunofluorescence Microscopy**

Immunofluorescence of CCP110.

Tissue: rat colon tissue.

Primary Antibody: CCP110 antibody at 20 µg/mL.

**Disclaimer**

This product is for research use only and is not intended for therapeutic or diagnostic applications. Please contact a technical service representative for more information. All products of animal origin manufactured by Rockland Immunochemicals are derived from starting materials of North American origin. Collection was performed in United States Department of Agriculture (USDA) inspected facilities and all materials have been inspected and certified to be free of disease and suitable for exportation. All properties listed are typical characteristics and are not specifications. All suggestions and data are offered in good faith but without guarantee as conditions and methods of use of our products are beyond our control. All claims must be made within 30 days following the date of delivery. The prospective user must determine the suitability of our materials before adopting them on a commercial scale. Suggested uses of our products are not recommendations to use our products in violation of any patent or as a license under any patent of Rockland Immunochemicals, Inc. If you require a commercial license to use this material and do not have one, then return this material, unopened to: Rockland Inc., P.O. BOX 5199, Limerick, Pennsylvania, USA.