

**Datasheet for 600-401-AG1****CCNT1 Antibody****Overview**

<b>Description:</b>	Anti-CCNT1 (RABBIT) Antibody - 600-401-AG1
<b>Item No.:</b>	600-401-AG1
<b>Size:</b>	100 µg
<b>Applications:</b>	ELISA, IF, IHC, WB
<b>Reactivity:</b>	Human, Mouse, Rat
<b>Host Species:</b>	Rabbit

**Product Details**

<b>Background:</b>	Cyclins function as regulators of CDK kinases and exhibit distinct expression and degradation patterns which contribute to the temporal coordination of each mitotic event. The cyclin-T1 protein (CCNT1) belongs to the highly conserved cyclin family, whose members are characterized by a dramatic periodicity in protein abundance through the cell cycle. CCNT1 tightly associates with CDK9 kinase, and was found to be a major subunit of the transcription elongation factor p-TEFb. The kinase complex containing CCNT1 and the elongation factor can interact with, and act as a cofactor of human immunodeficiency virus type 1 (HIV-1) Tat protein, and was shown to be both necessary and sufficient for full activation of viral transcription. CCNT1 and its kinase partner were also found to be involved in the phosphorylation and regulation of the carboxy-terminal domain (CTD) of the largest RNA polymerase II subunit.
<b>Synonyms:</b>	rabbit anti-cyclin T1 antibody, CYCT 1 antibody, cycT1 antibody, HIVE1 antibody, Human immunodeficiency virus 1 expression antibody, CCNT1 Antibody, CCNT, CYCT1, HIVE1, Cyclin-T1, CycT1
<b>Host Species:</b>	Rabbit
<b>Clonality:</b>	Polyclonal
<b>Format:</b>	IgG

**Target Details**

<b>Gene Name:</b>	CCNT1
<b>Reactivity:</b>	Human, Mouse, Rat

<b>Immunogen Type:</b>	Conjugated Peptide
<b>Immunogen:</b>	Anti- CCNT1 antibody was prepared from whole rabbit serum produced by repeated immunizations with an 18 amino acid peptide near the C-terminus of human CCNT1.
<b>Purity/Specificity:</b>	Anti-CCNT1 Antibody was affinity purified from monospecific antiserum by immunoaffinity chromatography. Cross reactivity with CCNT1 from other sources has not been determined.
<b>Relevant Links:</b>	<ul style="list-style-type: none"><li>• <a href="#">UniProtKB - O60563</a></li><li>• <a href="#">GeneID - 904</a></li><li>• <a href="#">NCBI - NP_001231</a></li></ul>

## Application Details

<b>Tested Applications:</b>	ELISA, IF, IHC, WB
<b>Application Note:</b>	Anti-CCNT1 Antibody has been tested for use in ELISA, Western Blotting, Immunohistochemistry and Immunofluorescence. Specific conditions for reactivity should be optimized by the end user. Expect a band at approximately 81 kDa in Western Blots of specific cell lysates and tissues.
<b>Assay Dilutions:</b>	All assays should be optimized by the user. Recommended dilutions (if any) may be listed below.
<b>ELISA:</b>	1:10,000 - 1:20,000
<b>IF:</b>	User Optimized
<b>IHC:</b>	User Optimized
<b>WB:</b>	1-2 µg/mL

## Formulation

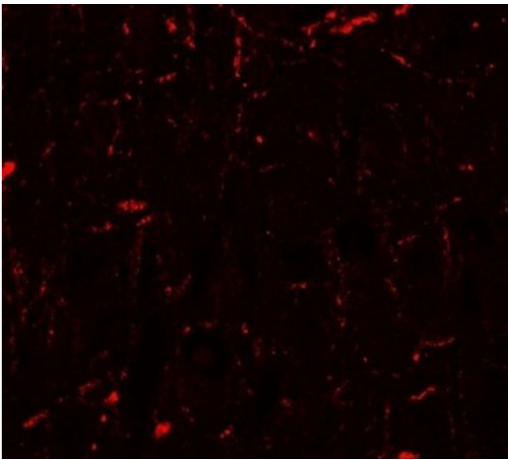
<b>Physical State:</b>	Liquid (sterile filtered)
<b>Concentration:</b>	1 mg/mL by UV absorbance at 280 nm
<b>Buffer:</b>	0.01 M Sodium Phosphate, 0.25 M Sodium Chloride, pH 7.2
<b>Preservative:</b>	0.02% (w/v) Sodium Azide
<b>Stabilizer:</b>	None

## Shipping & Handling

<b>Shipping Condition:</b>	Dry Ice
----------------------------	---------

<b>Storage Condition:</b>	Store vial at -20° C prior to opening. Aliquot contents and freeze at -20° C or below for extended storage. Avoid cycles of freezing and thawing. Centrifuge product if not completely clear after standing at room temperature. This product is stable for several weeks at 4° C as an undiluted liquid. Dilute only prior to immediate use.
<b>Expiration:</b>	Expiration date is one (1) year from date of receipt.

## Images

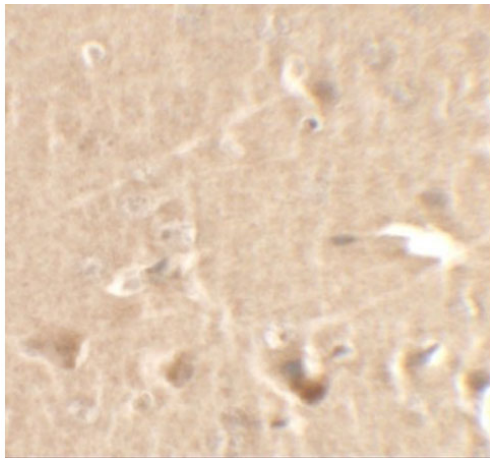


### **Immunofluorescence Microscopy**

Immunofluorescence of CCNT1.

Tissue: rat brain tissue.

Primary Antibody: CCNT1 antibody at 20 µg/ml.

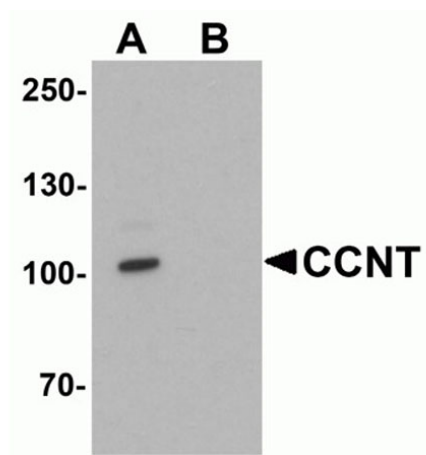


### **Immunohistochemistry**

Immunohistochemistry of CCNT1.

Tissue: rat brain tissue.

Primary Antibody: CCNT1 antibody at 2.5 µg/ml.

**Western Blot**

Western blot analysis of CCNT1.

Load: rat brain tissue lysate.

Primary Antibody: CCNT1 antibody at 1  $\mu\text{g}/\text{mL}$  in (A) the absence and (B) the presence of blocking peptide.

**Disclaimer**

This product is for research use only and is not intended for therapeutic or diagnostic applications. Please contact a technical service representative for more information. All products of animal origin manufactured by Rockland Immunochemicals are derived from starting materials of North American origin. Collection was performed in United States Department of Agriculture (USDA) inspected facilities and all materials have been inspected and certified to be free of disease and suitable for exportation. All properties listed are typical characteristics and are not specifications. All suggestions and data are offered in good faith but without guarantee as conditions and methods of use of our products are beyond our control. All claims must be made within 30 days following the date of delivery. The prospective user must determine the suitability of our materials before adopting them on a commercial scale. Suggested uses of our products are not recommendations to use our products in violation of any patent or as a license under any patent of Rockland Immunochemicals, Inc. If you require a commercial license to use this material and do not have one, then return this material, unopened to: Rockland Inc., P.O. BOX 5199, Limerick, Pennsylvania, USA.