

Datasheet for 600-401-AF5 CCDC47 Antibody

Overview

Description:	Anti-CCDC47 (RABBIT) Antibody - 600-401-AF5
Item No.:	600-401-AF5
Size:	100 µg
Applications:	ELISA, IF, IHC, WB
Reactivity:	Human, Mouse
Host Species:	Rabbit

Product Details

Background:	The coiled-coil domain is a common protein motif that is often involved in protein oligomerization and is found in proteins such as transcription factors and intermediate filaments. The CCDC47 gene maps to chromosome 17 at 17q23.3. Little is known about this single-pass membrane protein except that the coiled-coil domain is within the cytosolic domain near the carboxy terminus.
Synonyms:	CCDC47 Antibody, GK001, MSTP041, Coiled-coil domain-containing protein 47
Host Species:	Rabbit
Clonality:	Polyclonal
Format:	IgG

Target Details

Gene Name:	CCDC47
Reactivity:	Human, Mouse
Immunogen Type:	Conjugated Peptide
Immunogen:	Anti-CCDC47 antibody was prepared from whole rabbit serum produced by repeated immunizations with a 16 amino acid synthetic peptide from near the C-terminus of human CCDC47.
Purity/Specificity:	Anti-CCDC47 Antibody was affinity purified from monospecific antiserum by immunoaffinity chromatography. Cross reactivity with CCDC47 from other sources has not been determined.

Relevant Links:	<ul style="list-style-type: none">• UniProtKB - Q96A33• GeneID - 57003• NCBI - EAW94279
------------------------	---

Application Details

Tested Applications:	ELISA, IF, IHC, WB
Application Note:	Anti-CCDC47 Antibody has been tested for use in ELISA, Western Blotting, Immunohistochemistry and Immunofluorescence. Specific conditions for reactivity should be optimized by the end user. Expect a band at approximately 56 kDa in Western Blots of specific cell lysates and tissues.
Assay Dilutions:	All assays should be optimized by the user. Recommended dilutions (if any) may be listed below.
ELISA:	1:10,000 - 1:20,000
IF:	20 µg/mL
IHC:	5 µg/mL
WB:	1-2 µg/mL

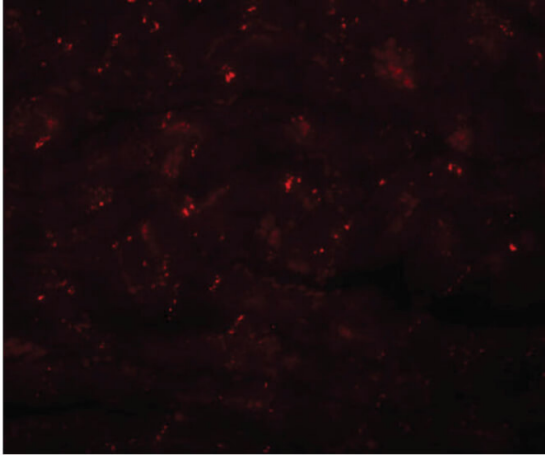
Formulation

Physical State:	Liquid (sterile filtered)
Concentration:	1 mg/mL by UV absorbance at 280 nm
Buffer:	0.01 M Sodium Phosphate, 0.25 M Sodium Chloride, pH 7.2
Preservative:	0.02% (w/v) Sodium Azide
Stabilizer:	None

Shipping & Handling

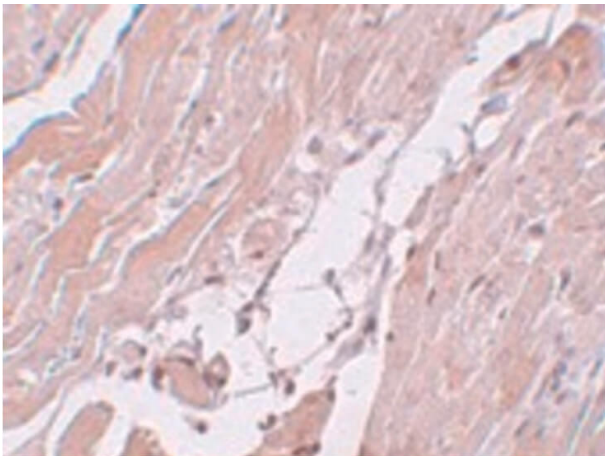
Shipping Condition:	Dry Ice
Storage Condition:	Store vial at -20° C prior to opening. Aliquot contents and freeze at -20° C or below for extended storage. Avoid cycles of freezing and thawing. Centrifuge product if not completely clear after standing at room temperature. This product is stable for several weeks at 4° C as an undiluted liquid. Dilute only prior to immediate use.
Expiration:	Expiration date is one (1) year from date of receipt.

Images



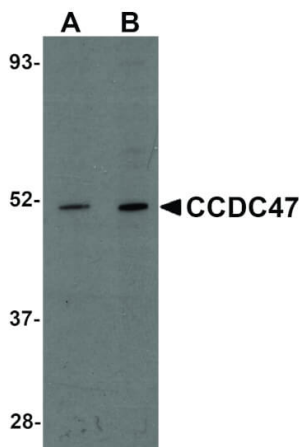
Immunofluorescence Microscopy

Immunofluorescence Microscopy of CDCC47 antibody.
Tissue: Mouse heart tissue. Fixation: 0.5% PFA. Antigen retrieval: not required. Primary antibody: CDCC47 antibody at 20 $\mu\text{g}/\text{mL}$ for 1 h at RT. Secondary antibody: Fluorescein rabbit secondary antibody at 1:10,000 for 45 min at RT. Localization: CDCC47 is a membrane protein. Staining: CDCC47 as red fluorescent signal.



Immunohistochemistry

Immunohistochemistry of CCDC47 antibody. Tissue: mouse heart tissue. Fixation: formalin fixed paraffin embedded. Antigen retrieval: not required. Primary antibody: CCDC47 antibody at 5 $\mu\text{g}/\text{mL}$ for 1 h at RT. Secondary antibody: Peroxidase rabbit secondary antibody at 1:10,000 for 45 min at RT. Localization: CCDC47 is a membrane protein. Staining: CCDC47 as precipitated brown signal with purple nuclear counterstain.



Western Blot

Western Blot of CCDC47 antibody. Lane 1: Mouse heart tissue lysate with CCDC47 antibody at 1 $\mu\text{g}/\text{mL}$. Lane 2: Mouse heart tissue lysate with CCDC47 antibody at 2 $\mu\text{g}/\text{mL}$. Secondary antibody: Peroxidase rabbit secondary antibody at 1:10,000 for 45 min at RT. Block: 5% BLOTTO overnight at 4°C. Predicted/Observed size: 56 kDa, 52 kDa for CCDC47. Other band(s): CCDC47 splice variants and isoforms.

Disclaimer

This product is for research use only and is not intended for therapeutic or diagnostic applications. Please contact a technical service representative for more information. All products of animal origin manufactured by Rockland Immunochemicals are derived from starting materials of North American origin. Collection was performed in United States Department of Agriculture (USDA) inspected facilities and all materials have been inspected and certified to be free of disease and suitable for exportation. All properties listed are typical characteristics and are not specifications. All suggestions and data are offered in good faith but without guarantee as conditions and methods of use of our products are beyond our control. All claims must be made within 30 days following the date of delivery. The prospective user must determine the suitability of our materials before adopting them on a commercial scale. Suggested uses of our products are not recommendations to use our products in violation of any patent or as a license under any patent of Rockland Immunochemicals, Inc. If you require a commercial license to use this material and do not have one, then return this material, unopened to: Rockland Inc., P.O. BOX 5199, Limerick, Pennsylvania, USA.