

## Datasheet for 600-401-AF0 CCDC106 Antibody

### Overview

<b>Description:</b>	Anti-CCDC106 (RABBIT) Antibody - 600-401-AF0
<b>Item No.:</b>	600-401-AF0
<b>Size:</b>	100 µg
<b>Applications:</b>	ELISA, IF, IHC, WB
<b>Reactivity:</b>	Human, Mouse, Rat
<b>Host Species:</b>	Rabbit

### Product Details

<b>Background:</b>	The coiled-coil domain is a common protein motif that is often involved in protein oligomerization and is found in proteins such as transcription factors and intermediate filaments. CCDC106 was initially identified as a p53-interacting protein by yeast two-hybrid screening. Other experiments demonstrated that CCDC106 co-localizes and interacts with p53 in the nucleus, inhibiting the transcriptional activity of p53 and stimulating p53 protein degradation, indicating that at least one of the functions of CCDC106 is acting as a negative regulator of p53.
<b>Synonyms:</b>	CCDC106 Antibody, ZNF581, HSU79303, Coiled-coil domain-containing protein 106
<b>Host Species:</b>	Rabbit
<b>Clonality:</b>	Polyclonal
<b>Format:</b>	IgG

### Target Details

<b>Gene Name:</b>	CCDC106
<b>Reactivity:</b>	Human, Mouse, Rat
<b>Immunogen Type:</b>	Conjugated Peptide
<b>Immunogen:</b>	Anti-CCDC106 antibody was prepared from whole rabbit serum produced by repeated immunizations with a 15 amino acid synthetic peptide near the C-terminus of human CCDC106.

<b>Purity/Specificity:</b>	Anti-CCDC106 Antibody was affinity purified from monospecific antiserum by immunoaffinity chromatography. Cross reactivity with CCDC106 from other sources has not been determined.
<b>Relevant Links:</b>	<ul style="list-style-type: none"><li>• <a href="#">UniProtKB - Q9BWC9</a></li><li>• <a href="#">GeneID - 29903</a></li><li>• <a href="#">NCBI - NP_037433</a></li></ul>

## Application Details

<b>Tested Applications:</b>	ELISA, IF, IHC, WB
<b>Application Note:</b>	Anti-CCDC106 Antibody has been tested for use in ELISA, Western Blotting, Immunohistochemistry and Immunofluorescence. Specific conditions for reactivity should be optimized by the end user. Expect a band at approximately 32 kDa in Western Blots of specific cell lysates and tissues.
<b>Assay Dilutions:</b>	All assays should be optimized by the user. Recommended dilutions (if any) may be listed below.
<b>ELISA:</b>	1:5000 - 1:10000
<b>IF:</b>	20 µg/mL
<b>IHC:</b>	5 µg/mL
<b>WB:</b>	0.5-1 µg/mL

## Formulation

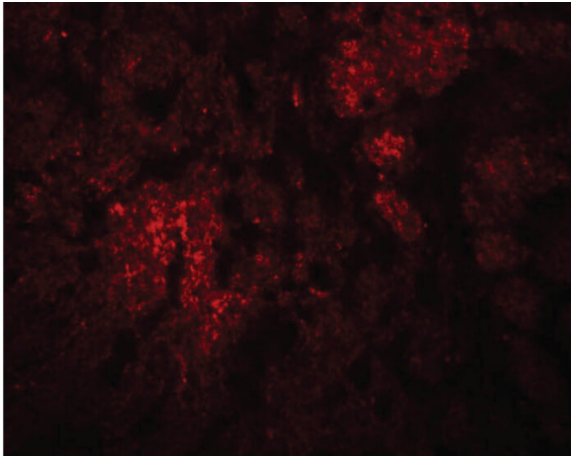
<b>Physical State:</b>	Liquid (sterile filtered)
<b>Concentration:</b>	1 mg/mL by UV absorbance at 280 nm
<b>Buffer:</b>	0.01 M Sodium Phosphate, 0.25 M Sodium Chloride, pH 7.2
<b>Preservative:</b>	0.02% (w/v) Sodium Azide
<b>Stabilizer:</b>	None

## Shipping & Handling

<b>Shipping Condition:</b>	Dry Ice
<b>Storage Condition:</b>	Store vial at -20° C prior to opening. Aliquot contents and freeze at -20° C or below for extended storage. Avoid cycles of freezing and thawing. Centrifuge product if not completely clear after standing at room temperature. This product is stable for several weeks at 4° C as an undiluted liquid. Dilute only prior to immediate use.

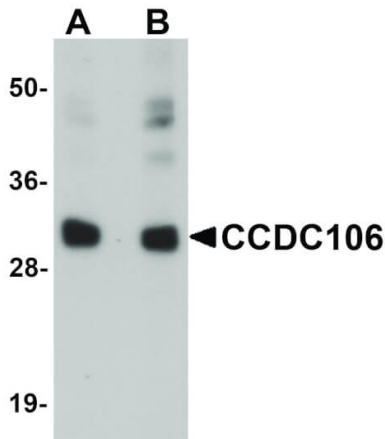
**Expiration:** Expiration date is one (1) year from date of receipt.

## Images



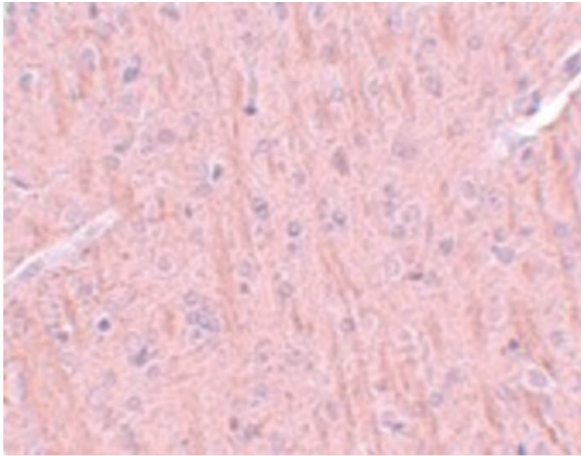
### Immunofluorescence Microscopy

Immunofluorescence Microscopy of CCDC106 antibody.  
Tissue: Rat brain tissue. Fixation: 0.5% PFA. Antigen retrieval: not required. Primary antibody: CCDC106 antibody at 20  $\mu\text{g}/\text{mL}$  for 1 h at RT. Secondary antibody: Fluorescein rabbit secondary antibody at 1:10,000 for 45 min at RT. Localization: CCDC106 is nuclear. Staining: CCDC106 as red fluorescent signal.



### Western Blot

Western Blot of CCDC106 antibody. Lane 1: Human brain tissue lysate with CCDC106 antibody at 0.5  $\mu\text{g}/\text{mL}$ . Lane 2: Human brain tissue lysate with CCDC106 antibody at 1  $\mu\text{g}/\text{mL}$ . Secondary antibody: Peroxidase rabbit secondary antibody at 1:10,000 for 45 min at RT. Block: 5% BLOTTO overnight at 4°C. Predicted/Observed size: 32 kDa, 32 kDa for CCDC106. Other band(s): CCDC106 splice variants and isoforms.

**Immunohistochemistry**

Immunohistochemistry of CCDC106 antibody. Tissue: rat brain tissue. Fixation: formalin fixed paraffin embedded. Antigen retrieval: not required. Primary antibody: CCDC106 antibody at 5 µg/mL for 1 h at RT. Secondary antibody: Peroxidase rabbit secondary antibody at 1:10,000 for 45 min at RT. Localization: CCDC106 is nuclear. Staining: CCDC106 as precipitated pink signal with blue nuclear counterstain.

**Disclaimer**

This product is for research use only and is not intended for therapeutic or diagnostic applications. Please contact a technical service representative for more information. All products of animal origin manufactured by Rockland Immunochemicals are derived from starting materials of North American origin. Collection was performed in United States Department of Agriculture (USDA) inspected facilities and all materials have been inspected and certified to be free of disease and suitable for exportation. All properties listed are typical characteristics and are not specifications. All suggestions and data are offered in good faith but without guarantee as conditions and methods of use of our products are beyond our control. All claims must be made within 30 days following the date of delivery. The prospective user must determine the suitability of our materials before adopting them on a commercial scale. Suggested uses of our products are not recommendations to use our products in violation of any patent or as a license under any patent of Rockland Immunochemicals, Inc. If you require a commercial license to use this material and do not have one, then return this material, unopened to: Rockland Inc., P.O. BOX 5199, Limerick, Pennsylvania, USA.