

Datasheet for 600-401-AE2**Caspase-8 Antibody****Overview**

Description:	Anti-Caspase-8 (RABBIT) Antibody - 600-401-AE2
Item No.:	600-401-AE2
Size:	100 µg
Applications:	ELISA, WB
Reactivity:	Human, Mouse
Host Species:	Rabbit

Product Details

Background:	Caspases are a family of cysteine proteases that can be divided into the apoptotic and inflammatory caspase subfamilies. Unlike the apoptotic caspases, members of the inflammatory subfamily are generally not involved in cell death but are associated with the immune response to microbial pathogens. The apoptotic subfamily can be further divided into initiator caspases, which are activated in response to death signals, and executioner caspases, which are activated by the initiator caspases and are responsible for cleavage of cellular substrates that ultimately lead to cell death. Caspase-8 is an initiator caspase that was identified as a member of the Fas/APO-1 death-inducing signaling complex. The adaptor molecule FADD couples procaspase-8 to the Fas receptor death domain; subsequent oligomerization promotes procaspase-8 autoactivation. FLIP, a catalytically inactive caspase-8-like molecule inhibits these interactions and thus can inhibit apoptosis. This antibody will only detect isoform E of caspase-8.
Synonyms:	Caspase-8 Antibody, CAP4, MACH, MCH5, FLICE, ALPS2B, Casp-8, Caspase-8, Apoptotic cysteine protease, CASP-8
Host Species:	Rabbit
Clonality:	Polyclonal
Format:	IgG

Target Details

Gene Name:	CASP8
Reactivity:	Human, Mouse

Immunogen Type:	Conjugated Peptide
Immunogen:	Anti-Caspase-8 antibody was prepared from whole rabbit serum produced by repeated immunizations with a 15 amino acid synthetic peptide from near the C-terminus human caspase-8 isoform E.
Purity/Specificity:	Anti-Caspase-8 Antibody was affinity purified from monospecific antiserum by immunoaffinity chromatography. Cross reactivity with Caspase-8 from other sources has not been determined.
Relevant Links:	<ul style="list-style-type: none">• UniProtKB - Q14790• GeneID - 841• NCBI - NP_001219

Application Details

Tested Applications:	ELISA, WB
Application Note:	Anti-Caspase-8 Antibody has been tested for use in ELISA and Western Blotting. Specific conditions for reactivity should be optimized by the end user. Expect a band at approximately 55 kDa in Western Blots of specific cell lysates and tissues.
Assay Dilutions:	All assays should be optimized by the user. Recommended dilutions (if any) may be listed below.
ELISA:	1:10,000
WB:	1 µg/mL

Formulation

Physical State:	Liquid (sterile filtered)
Concentration:	1 mg/mL by UV absorbance at 280 nm
Buffer:	0.01 M Sodium Phosphate, 0.25 M Sodium Chloride, pH 7.2
Preservative:	0.02% (w/v) Sodium Azide
Stabilizer:	None

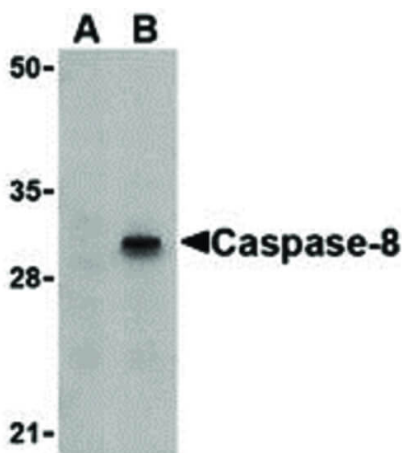
Shipping & Handling

Shipping Condition:	Dry Ice
----------------------------	---------

Storage Condition: Store vial at -20° C prior to opening. Aliquot contents and freeze at -20° C or below for extended storage. Avoid cycles of freezing and thawing. Centrifuge product if not completely clear after standing at room temperature. This product is stable for several weeks at 4° C as an undiluted liquid. Dilute only prior to immediate use.

Expiration: Expiration date is one (1) year from date of receipt.

Images



Western Blot

Western Blot of Caspase-8 antibody in HT-29 cell lysate.

Lane A: Caspase-8 antibody in the presence of blocking peptide. Lane B: Caspase-8 antibody in the absence of blocking peptide. Load: 35 µg per lane. Primary antibody:

Caspase-8 antibody at 1 µg/mL for overnight at 4°C.

Secondary antibody: Peroxidase rabbit secondary antibody at 1:10,000 for 45 min at RT. Block: 5% BLOTTO overnight at 4°C. Predicted/Observed size: 55 kDa, 32 kDa for Caspase-8.

Other band(s): Caspase-8 splice variants and isoforms.

Disclaimer

This product is for research use only and is not intended for therapeutic or diagnostic applications. Please contact a technical service representative for more information. All products of animal origin manufactured by Rockland Immunochemicals are derived from starting materials of North American origin. Collection was performed in United States Department of Agriculture (USDA) inspected facilities and all materials have been inspected and certified to be free of disease and suitable for exportation. All properties listed are typical characteristics and are not specifications. All suggestions and data are offered in good faith but without guarantee as conditions and methods of use of our products are beyond our control. All claims must be made within 30 days following the date of delivery. The prospective user must determine the suitability of our materials before adopting them on a commercial scale. Suggested uses of our products are not recommendations to use our products in violation of any patent or as a license under any patent of Rockland Immunochemicals, Inc. If you require a commercial license to use this material and do not have one, then return this material, unopened to: Rockland Inc., P.O. BOX 5199, Limerick, Pennsylvania, USA.