

**Datasheet for 600-401-AD7****Caspase-6 Antibody****Overview**

<b>Description:</b>	Anti-Caspase-6 (RABBIT) Antibody - 600-401-AD7
<b>Item No.:</b>	600-401-AD7
<b>Size:</b>	100 µg
<b>Applications:</b>	ELISA, IF, IHC, WB
<b>Reactivity:</b>	Human
<b>Host Species:</b>	Rabbit

**Product Details**

<b>Background:</b>	Caspases are a family of cysteine proteases that can be divided into the apoptotic and inflammatory caspase subfamilies. Unlike the apoptotic caspases, members of the inflammatory subfamily are generally not involved in cell death but are associated with the immune response to microbial pathogens. The apoptotic subfamily can be further divided into initiator caspases, which are activated in response to death signals, and executioner caspases, which are activated by the initiator caspases and are responsible for cleavage of cellular substrates that ultimately lead to cell death. Caspase-6 is an executioner caspase that was identified based on its homology with human caspases 2 and 3 as well as the <i>C. elegans</i> cell death protein CED-3. It possesses two isoforms, of which only the longer form possesses protease activity. Caspase-6 is highly expressed in adult brain and may play a role in several neuronal pathologies.
<b>Synonyms:</b>	Caspase-6 Antibody, MCH2, MCH2, Caspase-6, Apoptotic protease Mch-2, CASP-6
<b>Host Species:</b>	Rabbit
<b>Clonality:</b>	Polyclonal
<b>Format:</b>	IgG

**Target Details**

<b>Gene Name:</b>	CASP6
<b>Reactivity:</b>	Human
<b>Immunogen Type:</b>	Conjugated Peptide

<b>Immunogen:</b>	Anti-Caspase-6 antibody was prepared from whole rabbit serum produced by repeated immunizations with a 15 amino acid synthetic peptide from near the internal region of human Caspase-6.
<b>Purity/Specificity:</b>	Anti-Caspase-6 Antibody is immunoaffinity purified. Depending on cell lines or tissues used, either full-length or other cleavage products may be observed.
<b>Relevant Links:</b>	<ul style="list-style-type: none"><li>• <a href="#">UniProtKB - P55212</a></li><li>• <a href="#">GeneID - 839</a></li><li>• <a href="#">NCBI - NP_001217</a></li></ul>

## Application Details

<b>Tested Applications:</b>	ELISA, IF, IHC, WB
<b>Application Note:</b>	Anti-Caspase-6 Antibody has been tested for use in ELISA, Western Blotting, Immunocytochemistry and Immunofluorescence. Specific conditions for reactivity should be optimized by the end user. Expect a band at approximately 33 kDa in Western Blots of specific cell lysates and tissues.
<b>Assay Dilutions:</b>	All assays should be optimized by the user. Recommended dilutions (if any) may be listed below.
<b>ELISA:</b>	1:10,000 - 1:20,000
<b>IF:</b>	10 µg/mL
<b>WB:</b>	1-2 µg/mL

## Formulation

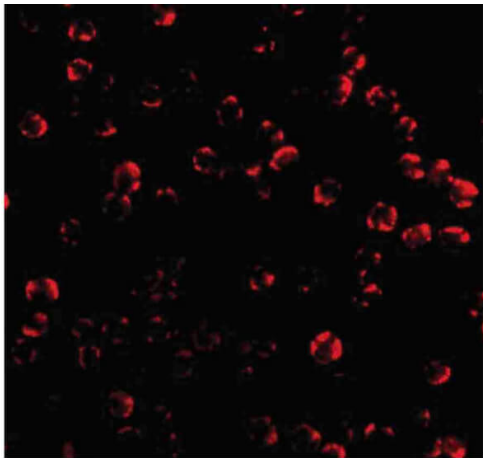
<b>Physical State:</b>	Liquid (sterile filtered)
<b>Concentration:</b>	1 mg/mL by UV absorbance at 280 nm
<b>Buffer:</b>	0.01 M Sodium Phosphate, 0.25 M Sodium Chloride, pH 7.2
<b>Preservative:</b>	0.02% (w/v) Sodium Azide
<b>Stabilizer:</b>	None

## Shipping & Handling

<b>Shipping Condition:</b>	Dry Ice
----------------------------	---------

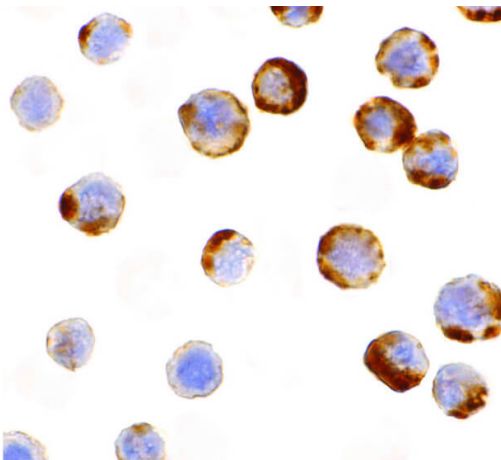
<b>Storage Condition:</b>	Store vial at -20° C prior to opening. Aliquot contents and freeze at -20° C or below for extended storage. Avoid cycles of freezing and thawing. Centrifuge product if not completely clear after standing at room temperature. This product is stable for several weeks at 4° C as an undiluted liquid. Dilute only prior to immediate use.
<b>Expiration:</b>	Expiration date is one (1) year from date of receipt.

## Images



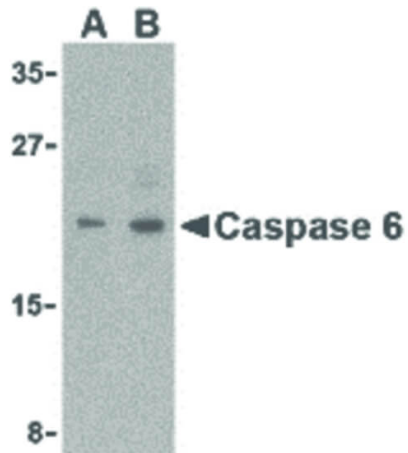
### Immunofluorescence Microscopy

Immunofluorescence Microscopy of Caspase-6 antibody. Cell Type: MCF7 cells. Fixation: 0.5% PFA. Antigen retrieval: not required. Primary antibody: Caspase-6 antibody at 10 µg/mL for 1 h at RT. Secondary antibody: Fluorescein rabbit secondary antibody at 1:10,000 for 45 min at RT. Localization: Caspase-6 is cytoplasmic. Staining: Caspase-6 as red fluorescent signal.



### Immunohistochemistry

Immunocytochemistry of Caspase-6 antibody. Cell Type: MCF7 cells. Fixation: formalin fixed paraffin embedded. Antigen retrieval: not required. Primary antibody: Caspase-6 antibody at 1 µg/mL for 1 h at RT. Secondary antibody: Peroxidase rabbit secondary antibody at 1:10,000 for 45 min at RT. Localization: Caspase-6 is cytoplasmic. Staining: Caspase-6 is stained brown with hematoxylin purple nuclear counterstain.

**Western Blot**

Western Blot of Caspase-6 antibody in MCF7 cell lysate. Lane A: Caspase-6 antibody at 1 µg/mL. Lane B: Caspase-6 antibody at 2 µg/mL. Load: 35 µg per lane. Primary antibody: Caspase 6 antibody at designated concentrations for overnight at 4°C. Secondary antibody: Peroxidase rabbit secondary antibody at 1:10,000 for 45 min at RT. Block: 5% BLOTTO overnight at 4°C. Predicted/Observed size: 33 kDa, 22 kDa for Caspase-6. Other band(s): Caspase-6 splice variants and isoforms.

**Disclaimer**

This product is for research use only and is not intended for therapeutic or diagnostic applications. Please contact a technical service representative for more information. All products of animal origin manufactured by Rockland Immunochemicals are derived from starting materials of North American origin. Collection was performed in United States Department of Agriculture (USDA) inspected facilities and all materials have been inspected and certified to be free of disease and suitable for exportation. All properties listed are typical characteristics and are not specifications. All suggestions and data are offered in good faith but without guarantee as conditions and methods of use of our products are beyond our control. All claims must be made within 30 days following the date of delivery. The prospective user must determine the suitability of our materials before adopting them on a commercial scale. Suggested uses of our products are not recommendations to use our products in violation of any patent or as a license under any patent of Rockland Immunochemicals, Inc. If you require a commercial license to use this material and do not have one, then return this material, unopened to: Rockland Inc., P.O. BOX 5199, Limerick, Pennsylvania, USA.