

Datasheet for 600-401-AC3
CASKIN2 Antibody**Overview**

Description:	Anti-CASKIN2 (RABBIT) Antibody - 600-401-AC3
Item No.:	600-401-AC3
Size:	100 µg
Applications:	ELISA, IF, IHC, WB
Reactivity:	Human
Host Species:	Rabbit

Product Details

Background:	Calcium/calmodulin-dependent serine protein kinase (CASK) is a conserved multi-domain scaffolding protein involved in brain development, synapse formation, and establishment of cell polarity. CASKINs (CASK interacting protein) interact with CASK and is thought to play a role in CASK function, specifically by coupling CASK to distinct downstream effectors. CASKIN2 is a multidomain protein containing six N-terminal ankyrin repeats, one SH3 domain, and two sterile alpha motif domains followed by a long proline-rich sequence and a short conserved C-terminal domain. It is expressed ubiquitously with highest levels present in fetal and adult liver tissue.
Synonyms:	CASKIN2 Antibody, ANKS5B, KIAA1139, Caskin-2, CASK-interacting protein 2
Host Species:	Rabbit
Clonality:	Polyclonal
Format:	IgG

Target Details

Gene Name:	CASKIN2
Reactivity:	Human
Immunogen Type:	Conjugated Peptide
Immunogen:	Anti-CASKIN2 antibody was prepared from whole rabbit serum produced by repeated immunizations with a 19 amino acid synthetic peptide near the N-terminus of human CASKIN2.

Purity/Specificity: Anti-CASKIN2 Antibody was affinity purified from monospecific antiserum by immunoaffinity chromatography. CASKIN2 antibody is predicted to not cross-react with other CASKIN family members. Three isoforms of CASKIN2 are known to exist; this antibody will not detect the shortest isoform.

Relevant Links:

- [UniProtKB - Q8WXE0](#)
- [GeneID - 57513](#)
- [NCBI - NP_065804](#)

Application Details

Tested Applications: ELISA, IF, IHC, WB

Application Note: Anti-CASKIN2 Antibody has been tested for use in ELISA, Western Blotting, Immunocytochemistry and Immunofluorescence. Specific conditions for reactivity should be optimized by the end user. Expect a band at approximately 127 kDa in Western Blots of specific cell lysates and tissues.

Assay Dilutions: All assays should be optimized by the user. Recommended dilutions (if any) may be listed below.

ELISA: 1:10,000

IF: 5 µg/mL

IHC: 2.5 µg/mL

WB: 1 µg/mL

Formulation

Physical State: Liquid (sterile filtered)

Concentration: 1 mg/mL by UV absorbance at 280 nm

Buffer: 0.01 M Sodium Phosphate, 0.25 M Sodium Chloride, pH 7.2

Preservative: 0.02% (w/v) Sodium Azide

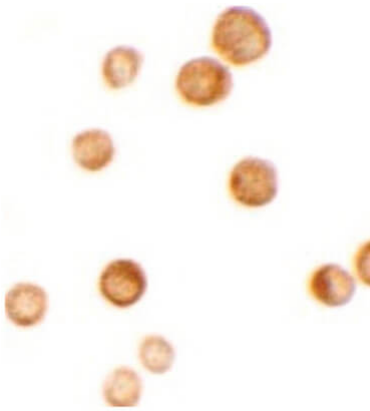
Stabilizer: None

Shipping & Handling

Shipping Condition: Dry Ice

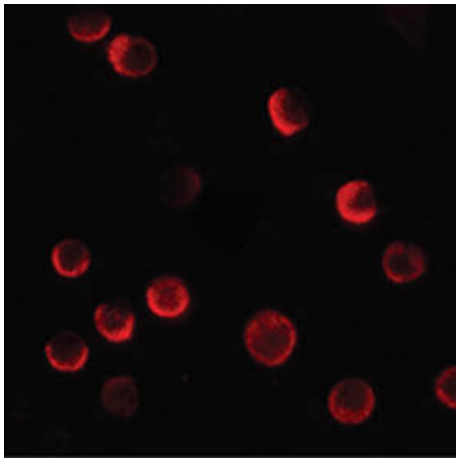
Storage Condition:	Store vial at -20° C prior to opening. Aliquot contents and freeze at -20° C or below for extended storage. Avoid cycles of freezing and thawing. Centrifuge product if not completely clear after standing at room temperature. This product is stable for several weeks at 4° C as an undiluted liquid. Dilute only prior to immediate use.
Expiration:	Expiration date is one (1) year from date of receipt.

Images



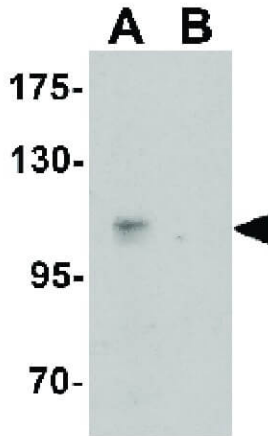
Immunocytochemistry

Immunocytochemistry of Rabbit Anti-Caskin 2 Antibody.
Tissue: HeLa cells. Primary Antibody: CASKIN2 antibody at 2.5 µg/mL. Secondary antibody: Peroxidase rabbit secondary antibody at 1:10,000 for 45 min at RT. Staining: CASKIN2 as precipitated brown signal.



Immunofluorescence Microscopy

Immunofluorescence of Rabbit Anti-Caskin2 Antibody.
Tissue: HeLa cells. Primary Antibody: CASKIN2 antibody at 20 µg/mL.

**Western Blot**

Western Blot of Rabbit Anti-Caskin2 Antibody. Lane A: HeLa cell lysate. Lane B: HeLa cell lysate in the presence of blocking peptide. Primary antibody: CASKIN2 antibody at 1 $\mu\text{g}/\text{mL}$ overnight at 4°C. Blocking: MB-073 Universal Blocking Buffer.

Disclaimer

This product is for research use only and is not intended for therapeutic or diagnostic applications. Please contact a technical service representative for more information. All products of animal origin manufactured by Rockland Immunochemicals are derived from starting materials of North American origin. Collection was performed in United States Department of Agriculture (USDA) inspected facilities and all materials have been inspected and certified to be free of disease and suitable for exportation. All properties listed are typical characteristics and are not specifications. All suggestions and data are offered in good faith but without guarantee as conditions and methods of use of our products are beyond our control. All claims must be made within 30 days following the date of delivery. The prospective user must determine the suitability of our materials before adopting them on a commercial scale. Suggested uses of our products are not recommendations to use our products in violation of any patent or as a license under any patent of Rockland Immunochemicals, Inc. If you require a commercial license to use this material and do not have one, then return this material, unopened to: Rockland Inc., P.O. BOX 5199, Limerick, Pennsylvania, USA.