

Datasheet for 600-401-AC1**CASK Antibody****Overview**

Description:	Anti-CASK (RABBIT) Antibody - 600-401-AC1
Item No.:	600-401-AC1
Size:	100 µg
Applications:	ELISA, IF, WB
Reactivity:	Human, Mouse, Rat
Host Species:	Rabbit

Product Details

Background:	CASK (Calcium/calmodulin-dependent serine protein kinase), a conserved multi-domain scaffolding protein, belongs to a MAGUK (membrane-associated guanylate kinase homologs) subfamily and is involved in cell junction organization, tumor suppression and signaling. It is characterized by a novel domain structure that consists of a calcium/calmodulin-dependent protein kinase domain followed by PDZ, SH3 and guanylate kinase-like (GUK) domains. CASK is ubiquitously expressed and significantly greater in brain where it is thought to be involved in signaling at neuronal synapses. CASK interacts with CASKINs and defects in CASK are the cause of mental retardation X-linked CASK-related.
Synonyms:	CASK Antibody, CMG, FGS4, LIN2, TNRC8, CAGH39, CAMGUK, MICPCH, MRXSNA, Peripheral plasma membrane protein CASK, Protein lin-2 homolog, hCASK
Host Species:	Rabbit
Clonality:	Polyclonal
Format:	IgG

Target Details

Gene Name:	CASK
Reactivity:	Human, Mouse, Rat
Immunogen Type:	Conjugated Peptide
Immunogen:	Anti-CASK antibody was prepared from whole rabbit serum produced by repeated immunizations with a 16 amino acid synthetic peptide near the N-terminus of human CASK.

Purity/Specificity: Anti-CASK Antibody was affinity purified from monospecific antiserum by immunoaffinity chromatography. At least six alternatively spliced transcript variants have been observed.

Relevant Links:

- [UniProtKB - O14936](#)
- [GeneID - 8573](#)
- [NCBI - NP_003679](#)

Application Details

Tested Applications: ELISA, IF, WB

Application Note: Anti-CASK Antibody has been tested for use in ELISA, Western Blotting and Immunofluorescence. Specific conditions for reactivity should be optimized by the end user. Expect a band at approximately 105 kDa in Western Blots of specific cell lysates and tissues.

Assay Dilutions: All assays should be optimized by the user. Recommended dilutions (if any) may be listed below.

ELISA: 1:10,000

IF: 20 µg/mL

WB: 1 µg/mL

Formulation

Physical State: Liquid (sterile filtered)

Concentration: 1 mg/mL by UV absorbance at 280 nm

Buffer: 0.01 M Sodium Phosphate, 0.25 M Sodium Chloride, pH 7.2

Preservative: 0.02% (w/v) Sodium Azide

Stabilizer: None

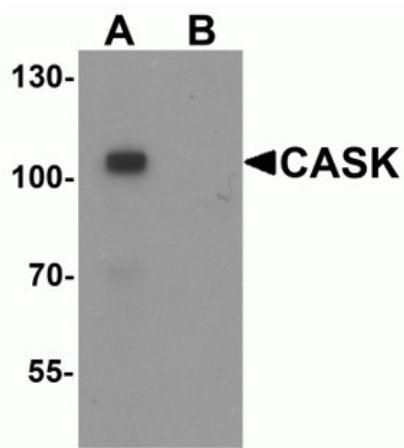
Shipping & Handling

Shipping Condition: Dry Ice

Storage Condition: Store vial at -20° C prior to opening. Aliquot contents and freeze at -20° C or below for extended storage. Avoid cycles of freezing and thawing. Centrifuge product if not completely clear after standing at room temperature. This product is stable for several weeks at 4° C as an undiluted liquid. Dilute only prior to immediate use.

Expiration: Expiration date is one (1) year from date of receipt.

Images

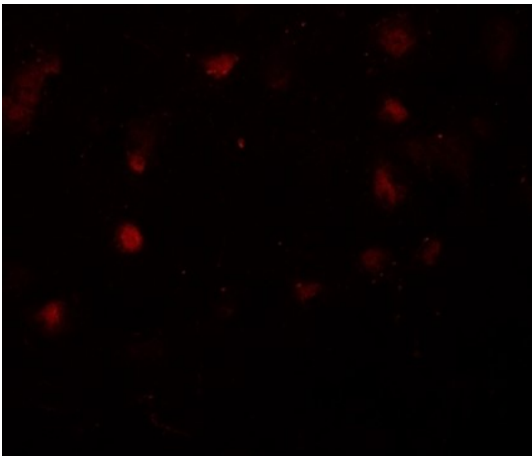


Western Blot

Western blot analysis of CASK.

Load: mouse brain tissue lysate.

Primary Antibody: CASK antibody at 1 µg/ml in (A) the absence and (B) the presence of blocking peptide.



Immunofluorescence Microscopy

Immunofluorescence of CASK.

Tissue: human brain tissue.

Primary Antibody: CASK antibody at 20 µg/mL.

Disclaimer

This product is for research use only and is not intended for therapeutic or diagnostic applications. Please contact a technical service representative for more information. All products of animal origin manufactured by Rockland Immunochemicals are derived from starting materials of North American origin. Collection was performed in United States Department of Agriculture (USDA) inspected facilities and all materials have been inspected and certified to be free of disease and suitable for exportation. All properties listed are typical characteristics and are not specifications. All suggestions and data are offered in good faith but without guarantee as conditions and methods of use of our products are beyond our control. All claims must be made within 30 days following the date of delivery. The prospective user must determine the suitability of our materials before adopting them on a commercial scale. Suggested uses of our products are not recommendations to use our products in violation of any patent or as a license under any patent of Rockland Immunochemicals, Inc. If you require a commercial license to use this material and do not have one, then return this material, unopened to: Rockland Inc., P.O. BOX 5199, Limerick, Pennsylvania, USA.