

Datasheet for 600-401-AB4
CARD10 Antibody**Overview**

Description:	Anti-CARD10 (RABBIT) Antibody - 600-401-AB4
Item No.:	600-401-AB4
Size:	100 µg
Applications:	ELISA, IF, IHC, WB
Reactivity:	Human, Mouse
Host Species:	Rabbit

Product Details

Background:	Apoptosis is related to many diseases and development. Cell death signals are transduced by death domain (DD), death effector domain (DED), and caspase recruitment domain (CARD) containing molecules. CARD containing proteins include some caspases, Apaf-1, CARD4, IAPs, RICK, ARC, RAIDD, Bcl-10, and ASC. A novel CARD-containing protein was recently identified and designated CARD10. This protein belongs to the membrane-associated guanylate kinase-like (MAGUK) family of proteins that can function as molecular scaffolds that assist assembly of signal transduction molecules. CARD 10 interacts with Bcl-10, a Bcl protein that promotes apoptosis, caspase-9 maturation and activation of NF-κB. CARD 10 and the related protein CARMA1 also associate with NEMO, the regulatory subunit of the IκK complex, demonstrating its importance in the regulation of NF-κB transcription factor activation.
Synonyms:	CARD10 Antibody, BIMP1, CARMA3, Caspase recruitment domain-containing protein 10, CARD-containing MAGUK protein 3, Carma 3
Host Species:	Rabbit
Clonality:	Polyclonal
Format:	IgG

Target Details

Gene Name:	CARD10
Reactivity:	Human, Mouse
Immunogen Type:	Conjugated Peptide

Immunogen:	Anti-CARD10 antibody was prepared from whole rabbit serum produced by repeated immunizations with a synthetic peptide corresponding to 14 amino acids at the C-terminus of human CARD10.
Purity/Specificity:	Anti-CARD10 Antibody is immunoaffinity purified. Cross reactivity with CARD10 from other sources has not been determined.
Relevant Links:	<ul style="list-style-type: none">• UniProtKB - Q9BWT7• GeneID - 29775• NCBI - AAK26165

Application Details

Tested Applications:	ELISA, IF, IHC, WB
Application Note:	Anti-CARD10 Antibody has been tested for use in ELISA, Western Blotting, Immunocytochemistry and Immunofluorescence. Specific conditions for reactivity should be optimized by the end user. Expect a band at approximately 116 kDa in Western Blots of specific cell lysates and tissues.
Assay Dilutions:	All assays should be optimized by the user. Recommended dilutions (if any) may be listed below.
ELISA:	1:50,000 - 1:100,000
IF:	20 µg/mL
WB:	5-10 µg/mL

Formulation

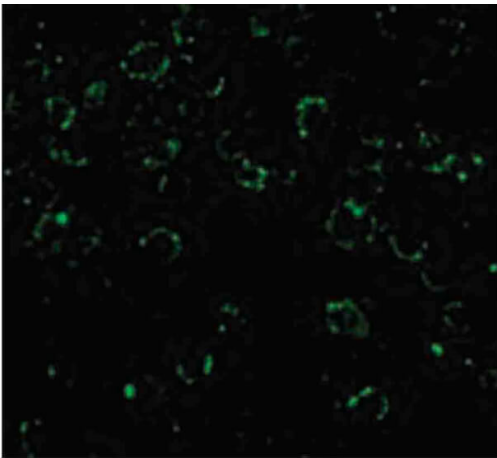
Physical State:	Liquid (sterile filtered)
Concentration:	1 mg/mL by UV absorbance at 280 nm
Buffer:	0.01 M Sodium Phosphate, 0.25 M Sodium Chloride, pH 7.2
Preservative:	0.02% (w/v) Sodium Azide
Stabilizer:	None

Shipping & Handling

Shipping Condition:	Dry Ice
----------------------------	---------

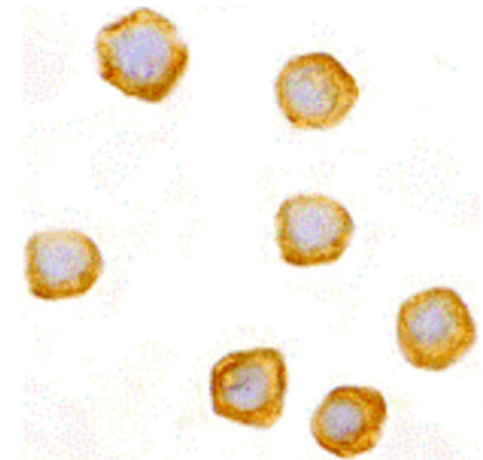
Storage Condition:	Store vial at -20° C prior to opening. Aliquot contents and freeze at -20° C or below for extended storage. Avoid cycles of freezing and thawing. Centrifuge product if not completely clear after standing at room temperature. This product is stable for several weeks at 4° C as an undiluted liquid. Dilute only prior to immediate use.
Expiration:	Expiration date is one (1) year from date of receipt.

Images



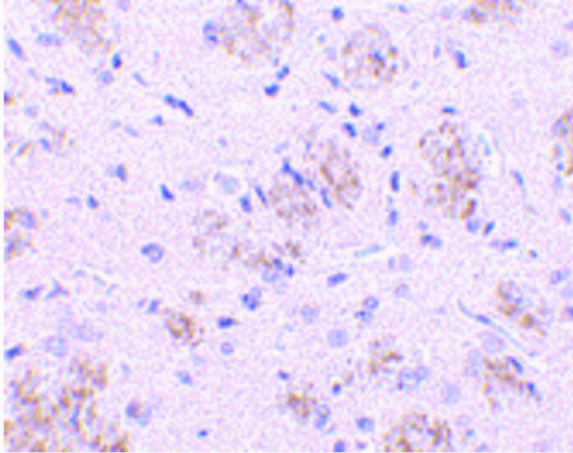
Immunofluorescence Microscopy

Immunofluorescence Microscopy of CARD10 antibody. Cell Type: EL4 cells. Fixation: 0.5% PFA. Antigen retrieval: not required. Primary antibody: CARD10 antibody at 20 µg/mL for 1 h at RT. Secondary antibody: Fluorescein rabbit secondary antibody at 1:10,000 for 45 min at RT. Localization: CARD10 is cytoplasmic. Staining: CARD10 as green fluorescent signal.



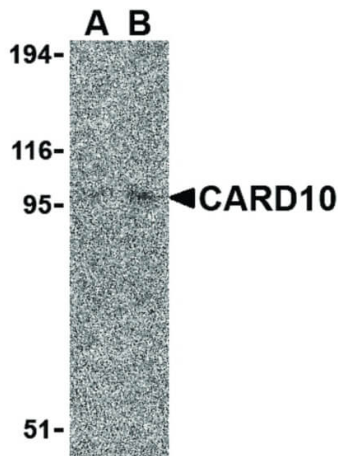
Immunohistochemistry

Immunocytochemistry of CARD10 antibody. Cell Type: EL4 cells. Fixation: formalin fixed paraffin embedded. Antigen retrieval: not required. Primary antibody: CARD10 antibody at 10 µg/mL for 1 h at RT. Secondary antibody: Peroxidase rabbit secondary antibody at 1:10,000 for 45 min at RT. Localization: CARD10 is cytoplasmic. Staining: CARD10 as brown stain with purple counterstain.



Immunohistochemistry

Immunohistochemistry of KLHL1 antibody. Tissue: rat brain tissue. Fixation: formalin fixed paraffin embedded. Antigen retrieval: not required. Primary antibody: KLHL1 antibody at 10 µg/mL for 1 h at RT. Secondary antibody: Peroxidase rabbit secondary antibody at 1:10,000 for 45 min at RT. Localization: KLHL1 is cytoplasmic. Staining: KLHL1 as precipitated purple nuclear stain with hematoxylin purple nuclear counterstain.



Western Blot

Western Blot of CARD10 antibody. Lane A: EL4 cell lysate at 5 µg/ml. Lane B: EL4 cell lysate at 10 µg/ml. Load: 35 µg per lane. Secondary antibody: Peroxidase rabbit secondary antibody at 1:10,000 for 45 min at RT. Block: 5% BLOTTO overnight at 4°C. Predicted/Observed size: 116 kDa, 98 kDa for CARD10. Other band(s): CARD10 splice variants and isoforms.

Disclaimer

This product is for research use only and is not intended for therapeutic or diagnostic applications. Please contact a technical service representative for more information. All products of animal origin manufactured by Rockland Immunochemicals are derived from starting materials of North American origin. Collection was performed in United States Department of Agriculture (USDA) inspected facilities and all materials have been inspected and certified to be free of disease and suitable for exportation. All properties listed are typical characteristics and are not specifications. All suggestions and data are offered in good faith but without guarantee as conditions and methods of use of our products are beyond our control. All claims must be made within 30 days following the date of delivery. The prospective user must determine the suitability of our materials before adopting them on a commercial scale. Suggested uses of our products are not recommendations to use our products in violation of any patent or as a license under any patent of Rockland Immunochemicals, Inc. If you require a commercial license to use this material and do not have one, then return this material, unopened to: Rockland Inc., P.O. BOX 5199, Limerick, Pennsylvania, USA.