

**Datasheet for 600-401-AA1****CaBP7 Antibody****Overview**

<b>Description:</b>	Anti-CaBP7 (RABBIT) Antibody - 600-401-AA1
<b>Item No.:</b>	600-401-AA1
<b>Size:</b>	100 µg
<b>Applications:</b>	ELISA, IF, IHC, WB
<b>Reactivity:</b>	Human, Mouse, Rat
<b>Host Species:</b>	Rabbit

**Product Details**

<b>Background:</b>	Calcium binding proteins (CaBP) play a crucial role in the calcium-mediated cellular signal transduction pathway in the central nervous system. The CaBP family shares much similarity with CaM I (calmodulin), and it has been shown that CaBP proteins can substitute functionally for, and possibly augment the function of, CaM I. CaBP7 (Calcium-binding protein 7), contains two EF-hand domains for calcium binding and shares 70% homology with CaBP8 and 50% homology with CaM I. It negatively regulates Golgi-to-plasma membrane trafficking by interacting with PI4KB and inhibiting its activity. CaBP7 and 8 possess a targeting mechanism that is unique amongst the CaBPs that may contribute to differential functional Ca <sup>2+</sup> -sensing by these family members.
<b>Synonyms:</b>	CaBP7 Antibody, CALN2, CALN2, Calcium-binding protein 7, Calneuron II, CaBP7
<b>Host Species:</b>	Rabbit
<b>Clonality:</b>	Polyclonal
<b>Format:</b>	IgG

**Target Details**

<b>Gene Name:</b>	CABP7
<b>Reactivity:</b>	Human, Mouse, Rat
<b>Immunogen Type:</b>	Conjugated Peptide
<b>Immunogen:</b>	Anti-CaBP7 antibody was prepared from whole rabbit serum produced by repeated immunizations with a 15 amino acid synthetic peptide near the N-terminus of human CaBP7.

**Purity/Specificity:** Anti-CaBP7 Antibody was affinity purified from monospecific antiserum by immunoaffinity chromatography. Cross reactivity with CaBP7 from other sources has not been determined.

**Relevant Links:**

- [UniProtKB - Q86V35](#)
- [GeneID - 164633](#)
- [NCBI - NP\\_872333](#)

## Application Details

**Tested Applications:** ELISA, IF, IHC, WB

**Application Note:** Anti-CaBP7 Antibody has been tested for use in ELISA, Western Blotting, Immunocytochemistry and Immunofluorescence. Specific conditions for reactivity should be optimized by the end user. Expect a band at approximately 24 kDa in Western Blots of specific cell lysates and tissues.

**Assay Dilutions:** All assays should be optimized by the user. Recommended dilutions (if any) may be listed below.

**ELISA:** 1:10,000 - 1:20,000

**IF:** 20 µg/mL

**WB:** 1-2 µg/mL

## Formulation

**Physical State:** Liquid (sterile filtered)

**Concentration:** 1 mg/mL by UV absorbance at 280 nm

**Buffer:** 0.01 M Sodium Phosphate, 0.25 M Sodium Chloride, pH 7.2

**Preservative:** 0.02% (w/v) Sodium Azide

**Stabilizer:** None

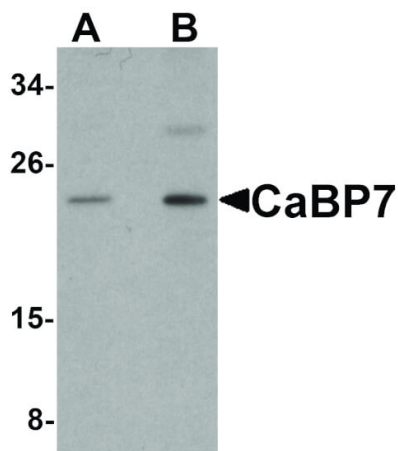
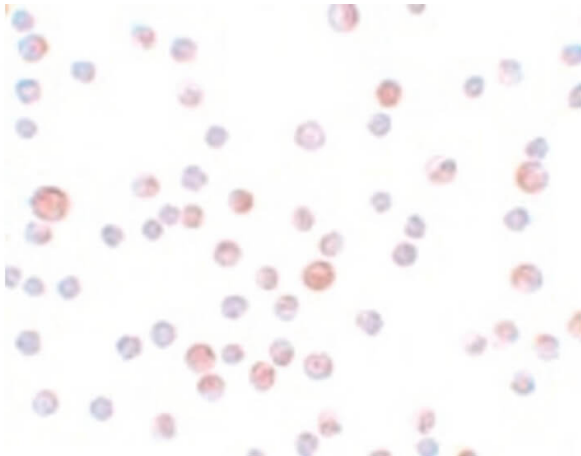
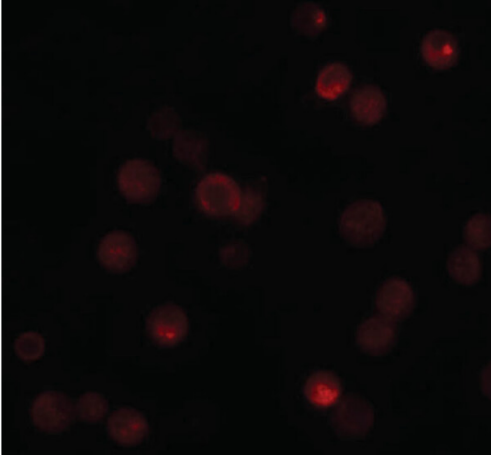
## Shipping & Handling

**Shipping Condition:** Dry Ice

**Storage Condition:** Store vial at -20° C prior to opening. Aliquot contents and freeze at -20° C or below for extended storage. Avoid cycles of freezing and thawing. Centrifuge product if not completely clear after standing at room temperature. This product is stable for several weeks at 4° C as an undiluted liquid. Dilute only prior to immediate use.

**Expiration:** Expiration date is one (1) year from date of receipt.

## Images



### Immunofluorescence Microscopy

Immunofluorescence Microscopy of CABP7 antibody.  
Tissue: HeLa cells. Fixation: 0.5% PFA. Antigen retrieval: not required. Primary antibody: CABP7 antibody at 20 µg/mL for 1 h at RT. Secondary antibody: Fluorescein rabbit secondary antibody at 1:10,000 for 45 min at RT. Localization: CABP7 is a membrane protein. Staining: CABP7 as red fluorescent signal.

### Immunohistochemistry

Immunocytochemistry of CaBP7 antibody. Tissue: HeLa cells. Fixation: formalin fixed paraffin embedded. Antigen retrieval: not required. Primary antibody: CaBP7 antibody at 4 µg/mL for 1 h at RT. Secondary antibody: Peroxidase rabbit secondary antibody at 1:10,000 for 45 min at RT. Localization: CaBP7 is a membrane protein. Staining: CaBP7 as precipitated blue signal with pink nuclear counterstain.

### Western Blot

Western Blot of CaBP7 antibody. Lane 1: HeLa cell lysate with CaBP7 antibody at 1 µg/mL. Lane 2: HeLa cell lysate with CaBP7 antibody at 2 µg/mL. Secondary antibody: Peroxidase rabbit secondary antibody at 1:10,000 for 45 min at RT. Block: 5% BLOTTO overnight at 4°C. Predicted/Observed size: 24 kDa, 24 kDa for CaBP7. Other band(s): CaBP7 splice variants and isoforms.

## Disclaimer

This product is for research use only and is not intended for therapeutic or diagnostic applications. Please contact a technical service representative for more information. All products of animal origin manufactured by Rockland Immunochemicals are derived from starting materials of North American origin. Collection was performed in United States Department of Agriculture (USDA) inspected facilities and all materials have been inspected and certified to be free of disease and suitable for exportation. All properties listed are typical characteristics and are not specifications. All suggestions and data are offered in good faith but without guarantee as conditions and methods of use of our products are beyond our control. All claims must be made within 30 days following the date of delivery. The prospective user must determine the suitability of our materials before adopting them on a commercial scale. Suggested uses of our products are not recommendations to use our products in violation of any patent or as a license under any patent of Rockland Immunochemicals, Inc. If you require a commercial license to use this material and do not have one, then return this material, unopened to: Rockland Inc., P.O. BOX 5199, Limerick, Pennsylvania, USA.