

**Datasheet for 600-401-A69****TLR9 Antibody****Overview**

<b>Description:</b>	Anti-TLR9 (RABBIT) Antibody - 600-401-A69
<b>Item No.:</b>	600-401-A69
<b>Size:</b>	100 µg
<b>Applications:</b>	ELISA, IF, IHC, WB
<b>Reactivity:</b>	Human, Mouse, Rat
<b>Host Species:</b>	Rabbit

**Product Details**

<b>Background:</b>	Toll-like receptors (TLRs) are evolutionarily conserved pattern-recognition molecules resembling the toll proteins that mediate antimicrobial responses in <i>Drosophila</i> . These proteins recognize different microbial products during infection and serve as an important link between the innate and adaptive immune responses. TLR9 forms a subfamily along with TLR7 and TLR8 that recognize viral RNA and CpG DNA sequences and are localized in intracellular acidic compartments such as the phagolysosome. Unlike other TLRs which act through adaptor molecules such as TOLLIP, TIRAP, TRIF, and MyD88 to activate various kinases and transcription factors to respond to potential infection, TLR9 is strictly dependent on MyD88.
<b>Synonyms:</b>	CD 289 antibody, CD289 antibody, TLR 9 antibody, Toll like receptor 9 antibody, Toll like receptor 9 isoform A precursor antibody, Toll like receptor 9 isoform B antibody
<b>Host Species:</b>	Rabbit
<b>Clonality:</b>	Polyclonal
<b>Format:</b>	IgG

**Target Details**

<b>Gene Name:</b>	TLR9
<b>Reactivity:</b>	Human, Mouse, Rat
<b>Immunogen Type:</b>	Conjugated Peptide

<b>Immunogen:</b>	This affinity purified antibody was prepared from whole rabbit serum produced by repeated immunizations with a synthetic peptide corresponding to an internal region of human toll-like receptor 9 (TLR9) protein.
<b>Purity/Specificity:</b>	This affinity purified antibody is directed against human TLR9 protein. The product was affinity purified from monospecific antiserum by immunoaffinity chromatography. This antibody is reactive with TLR9 from human, mouse and rat sources. Cross reactivity with TLR9 from other sources has not been determined.
<b>Relevant Links:</b>	<ul style="list-style-type: none"><li>• <a href="#">NCBI - AAZ95520.1</a></li><li>• <a href="#">UniProtKB - Q9NR96</a></li><li>• <a href="#">GeneID - 54106</a></li></ul>

## Application Details

<b>Tested Applications:</b>	ELISA, IF, IHC, WB
<b>Application Note:</b>	This affinity purified antibody has been tested for use in ELISA, immunohistochemistry, immunofluorescence, and western blotting. Specific conditions for reactivity should be optimized by the end user. Expect a band at ~94 kDa in size corresponding to TLR9 by western blotting in the appropriate cell lysate or extract. Jurkat cell lysate can be used as a positive control.
<b>Assay Dilutions:</b>	All assays should be optimized by the user. Recommended dilutions (if any) may be listed below.
<b>ELISA:</b>	1:10,000 - 1:40,000
<b>IF:</b>	20 µg/mL
<b>IHC:</b>	2 ug/ml
<b>WB:</b>	0.5-2 ug/ml

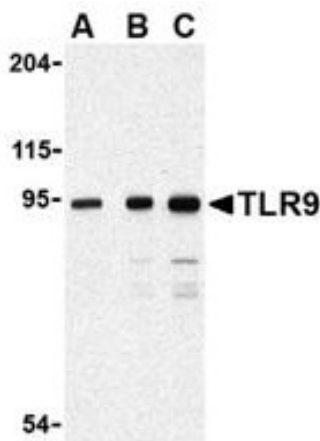
## Formulation

<b>Physical State:</b>	Liquid (sterile filtered)
<b>Concentration:</b>	1.0 mg/mL by UV absorbance at 280 nm
<b>Buffer:</b>	0.02 M Potassium Phosphate, 0.15 M Sodium Chloride, pH 7.2
<b>Preservative:</b>	0.02% (w/v) Sodium Azide
<b>Stabilizer:</b>	None

## Shipping & Handling

<b>Shipping Condition:</b>	Wet Ice
<b>Storage Condition:</b>	Antibody can be stored at 4°C up to one year. Antibodies should not be exposed to prolonged high temperatures.
<b>Expiration:</b>	Expiration date is one (1) year from date of receipt.

## Images



### Western Blot

Western Blot of Rabbit Anti-TLR-9 Antibody. Lane 1: Jurkat whole cell lysate using 0.5 µg/ml. Lane 2: Jurkat whole cell lysate using 1.0 µg/ml. Lane 3: Jurkat whole cell lysate using 2.0 µg/ml. Load: 10 µg per lane. Primary antibody: TLR 9 antibody overnight at 4°C. Secondary antibody: IRDye800™ rabbit secondary antibody at 1:10,000 for 45 min at RT. Block: 5% BLOTTO overnight at 4°C. Predicted/Observed size: 116 kDa, ~94 kDa for TLR9. Other band(s): none.

## Disclaimer

This product is for research use only and is not intended for therapeutic or diagnostic applications. Please contact a technical service representative for more information. All products of animal origin manufactured by Rockland Immunochemicals are derived from starting materials of North American origin. Collection was performed in United States Department of Agriculture (USDA) inspected facilities and all materials have been inspected and certified to be free of disease and suitable for exportation. All properties listed are typical characteristics and are not specifications. All suggestions and data are offered in good faith but without guarantee as conditions and methods of use of our products are beyond our control. All claims must be made within 30 days following the date of delivery. The prospective user must determine the suitability of our materials before adopting them on a commercial scale. Suggested uses of our products are not recommendations to use our products in violation of any patent or as a license under any patent of Rockland Immunochemicals, Inc. If you require a commercial license to use this material and do not have one, then return this material, unopened to: Rockland Inc., P.O. BOX 5199, Limerick, Pennsylvania, USA.