

**Datasheet for 600-401-A23****Cybr Antibody****Overview**

<b>Description:</b>	Anti-Cybr (RABBIT) Antibody - 600-401-A23
<b>Item No.:</b>	600-401-A23
<b>Size:</b>	100 µg
<b>Applications:</b>	ELISA, WB
<b>Reactivity:</b>	Mouse
<b>Host Species:</b>	Rabbit

**Product Details**

<b>Background:</b>	This antibody is designed, produced, and validated as part of a collaboration between Rockland and the National Cancer Institute (NCI) and is suitable for Cancer, Immunology and Nuclear Signaling research. Cybr (Pscdbp) is a new scaffold protein with significant homology to Tamalin. It contains a PDZ binding domain and a coiled-coil domain. Cybr is highly expressed in the immune system, and its expression seems to be common to nearly all immune cell populations (T cells, B cells, NK Macrophages, dendritic cells). Other organs/tissues in which Cybr is expressed include lung, kidney, intestine and testes. Cybr may play an important in vivo role in cell migration, especially when modulated by pro-inflammatory cytokines.
<b>Synonyms:</b>	rabbit anti-Cybr Antibody, Cytohesin-interacting protein, Cytohesin-binding protein HE, Cbp HE, Pleckstrin homology Sec7 and coiled-coil domains-binding protein, Pscdbp, Cytip
<b>Host Species:</b>	Rabbit
<b>Clonality:</b>	Polyclonal
<b>Format:</b>	IgG

**Target Details**

<b>Gene Name:</b>	Cytip
<b>Reactivity:</b>	Mouse
<b>Immunogen Type:</b>	Conjugated Peptide
<b>Immunogen:</b>	This antibody was prepared from whole rabbit serum produced by repeated immunizations with a synthetic peptide corresponding to a region in the carboxy terminal portion of mouse Cybr.

**Purity/Specificity:** This affinity purified antibody is directed against mouse Cybr. A BLAST analysis was used to suggest cross-reactivity with Cybr from mouse and rat based on a 100% homology with the immunizing sequence. Reactivity against homologues from other sources is not known.

**Relevant Links:**

- [UniProtKB - Q91VY6](#)
- [NCBI - 21105855](#)
- [GeneID - 227929](#)

## Application Details

**Tested Applications:** ELISA, WB

**Application Note:** This antibody has been tested for use in ELISA, western blot, and immunoprecipitation. Specific conditions for reactivity should be optimized by the end user. Expect a band approximately 40 kDa in size corresponding to Cybr by western blotting in the appropriate cell lysate or extract.

**Assay Dilutions:** All assays should be optimized by the user. Recommended dilutions (if any) may be listed below.

**ELISA:** 1:5,000 - 1:20,000

**WB:** 1:1,000

## Formulation

**Physical State:** Liquid (sterile filtered)

**Concentration:** 0.86 mg/mL by UV absorbance at 280 nm

**Buffer:** 0.02 M Potassium Phosphate, 0.15 M Sodium Chloride, pH 7.2

**Preservative:** 0.01% (w/v) Sodium Azide

**Stabilizer:** None

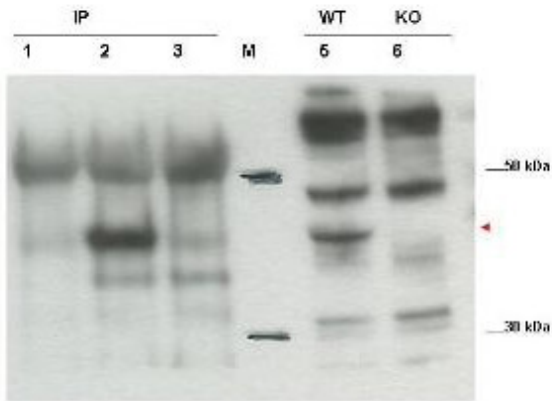
## Shipping & Handling

**Shipping Condition:** Dry Ice

**Storage Condition:** Store vial at -20° C prior to opening. Aliquot contents and freeze at -20° C or below for extended storage. Avoid cycles of freezing and thawing. Centrifuge product if not completely clear after standing at room temperature. This product is stable for several weeks at 4° C as an undiluted liquid. Dilute only prior to immediate use.

**Expiration:** Expiration date is one (1) year from date of receipt.

## Images



### Western Blot

Western blot using Rockland's affinity purified anti-Cybr antibody shows detection of endogenous Cybr from mouse splenocytes using anti-Cybr antibody to immunoprecipitate and western blot (lanes 1-3). Lane 1 shows reactivity of pre-immune sera. Lane 2 shows endogenous Cybr detected with antibody. Lane 3 shows no band detected in lysates prepared from splenocytes of Cybr knock-out mouse. Lane 5 shows direct western blot of wt splenocytes. Lane 6 shows direct western blot of knock out mouse. Personal Communication, V. Coppola, NCI, Bethesda, MD.

## Disclaimer

This product is for research use only and is not intended for therapeutic or diagnostic applications. Please contact a technical service representative for more information. All products of animal origin manufactured by Rockland Immunochemicals are derived from starting materials of North American origin. Collection was performed in United States Department of Agriculture (USDA) inspected facilities and all materials have been inspected and certified to be free of disease and suitable for exportation. All properties listed are typical characteristics and are not specifications. All suggestions and data are offered in good faith but without guarantee as conditions and methods of use of our products are beyond our control. All claims must be made within 30 days following the date of delivery. The prospective user must determine the suitability of our materials before adopting them on a commercial scale. Suggested uses of our products are not recommendations to use our products in violation of any patent or as a license under any patent of Rockland Immunochemicals, Inc. If you require a commercial license to use this material and do not have one, then return this material, unopened to: Rockland Inc., P.O. BOX 5199, Limerick, Pennsylvania, USA.