

Datasheet for 600-401-948**Cas5 Antibody****Overview**

Description:	Anti-Cas5 (RABBIT) Antibody - 600-401-948
Item No.:	600-401-948
Size:	100 µg
Applications:	ELISA, WB
Reactivity:	Human
Host Species:	Rabbit

Product Details

Background:	This antibody is designed, produced, and validated as part of a collaboration between Rockland and the National Cancer Institute (NCI) and is suitable for Cancer, Immunology and Nuclear Signaling research. hCas5 (Castor) is the human homolog of a Drosophila gene that regulates neurogenesis. In human neuro-blastoma tumors where a loss of heterozygosity of CASZ1 is noted, hCas functions to suppress the tumorigenicity of cells. hCas5 is a developmentally regulated transcription factor found in neural and muscle cells. hCas5 is a Zn finger transcription factor that is predominantly found in the nucleus. This antibody is designed to facilitate the functional study of this protein and its role in developmental regulation and expression in human tumor tissues.
Synonyms:	rabbit anti-Cas5 antibody, Castor homolog 1 zinc finger protein, CST, SRG, ZNF693, CASZ1, Cas-5, Cas 5
Host Species:	Rabbit
Clonality:	Polyclonal
Format:	IgG

Target Details

Gene Name:	hCAS5
Reactivity:	Human
Immunogen Type:	Conjugated Peptide

Immunogen:	This affinity purified antibody was prepared from whole rabbit serum produced by repeated immunizations with a synthetic peptide corresponding to region near the amino terminal end of human Cas5 protein.
Purity/Specificity:	This affinity-purified antibody is directed against human Cas5 protein. The product was affinity purified from monospecific antiserum by immunoaffinity purification. A BLAST analysis was used to suggest cross reactivity with Cas5 from human, mouse, chimpanzee, bovine, and rat based on 100% homology with the immunizing sequence. Expect cross reactivity with multiple isoforms of this protein. Cross reactivity with Cas5 from other sources has not been determined.
Relevant Links:	<ul style="list-style-type: none">• UniProtKB - B3KRV8• NCBI - XP_016857029• GeneID - 54897

Application Details

Tested Applications:	ELISA, WB
Application Note:	This affinity-purified antibody has been tested for use in ELISA and western blotting. Specific conditions for reactivity should be optimized by the end user. By western blot, a band approximately 125 kDa in size corresponding to hCas5 protein is expected in the appropriate cell lysate or extract.
Assay Dilutions:	All assays should be optimized by the user. Recommended dilutions (if any) may be listed below.
ELISA:	1:10,000 - 1:50,000
WB:	1:500- 1:2,000

Formulation

Physical State:	Liquid (sterile filtered)
Concentration:	1.3 mg/mL by UV absorbance at 280 nm
Buffer:	0.02 M Potassium Phosphate, 0.15 M Sodium Chloride, pH 7.2
Preservative:	0.01% (w/v) Sodium Azide
Stabilizer:	None

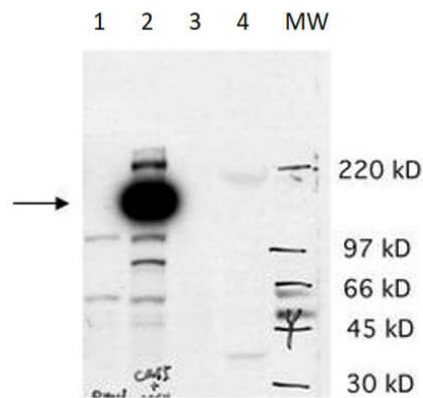
Shipping & Handling

Shipping Condition:	Dry Ice
----------------------------	---------

Storage Condition: Store vial at -20° C prior to opening. Aliquot contents and freeze at -20° C or below for extended storage. Avoid cycles of freezing and thawing. Centrifuge product if not completely clear after standing at room temperature. This product is stable for several weeks at 4° C as an undiluted liquid. Dilute only prior to immediate use.

Expiration: Expiration date is one (1) year from date of receipt.

Images



Western Blot

Western blot using Rockland's affinity purified anti-hCas5 antibody. Lane 1: AS cell lysate transfected with empty vector. Lane 2: AS cell lysate transfected with hCas5 (predicted MW 125kDa). Lane 3: BE2 cell lysate that have been shown to contain a high level of hCas mRNA (as tested by Northern blot). Lane 4: human muscle tissue lysate that shows high levels of hCas mRNA. Shows detection of a band ~125kDa in size corresponding to hCas5 in lane 2 (arrowhead). Specific band reactivity is effectively competed when the antibody is pre-incubated with the immunizing peptide (data not shown). Personal Communication. Carol Thiele, NCI, Bethesda, MD.

Disclaimer

This product is for research use only and is not intended for therapeutic or diagnostic applications. Please contact a technical service representative for more information. All products of animal origin manufactured by Rockland Immunochemicals are derived from starting materials of North American origin. Collection was performed in United States Department of Agriculture (USDA) inspected facilities and all materials have been inspected and certified to be free of disease and suitable for exportation. All properties listed are typical characteristics and are not specifications. All suggestions and data are offered in good faith but without guarantee as conditions and methods of use of our products are beyond our control. All claims must be made within 30 days following the date of delivery. The prospective user must determine the suitability of our materials before adopting them on a commercial scale. Suggested uses of our products are not recommendations to use our products in violation of any patent or as a license under any patent of Rockland Immunochemicals, Inc. If you require a commercial license to use this material and do not have one, then return this material, unopened to: Rockland Inc., P.O. BOX 5199, Limerick, Pennsylvania, USA.