

Datasheet for 600-401-941**p90 RSK1 Antibody****Overview**

| | |
|----------------------|---|
| Description: | Anti-p90 RSK1 (RABBIT) Antibody - 600-401-941 |
| Item No.: | 600-401-941 |
| Size: | 100 µg |
| Applications: | WB |
| Reactivity: | Mouse |
| Host Species: | Rabbit |

Product Details

| | |
|----------------------|---|
| Background: | RSK1 is a member of a family of 90kDa ribosomal protein S6 kinases, which includes Rsk1, Rsk2 and Rsk3. These are broadly expressed serine/threonine protein kinases activated in response to mitogenic stimuli, including extracellular signal regulated protein kinases Erk1 and Erk2. Rsk1 is activated by MAPK in vitro and in vivo via phosphorylation. Active Rsk's appear to play a major role in transcriptional regulation by translocating to the nucleus and phosphorylating c-Fos and CREB. RSK1 is studied in cancer research and is known to inactivate tumor suppressor complexes and death kinases. |
| Synonyms: | 90 kDa ribosomal protein S6 kinase 1 antibody, dJ590P13.1 (ribosomal protein S6 kinase, 90kD, polypeptide 1 antibody, dJ590P13.1 antibody, EC 2.7.11.1 antibody, HU 1 antibody, RSK1 |
| Host Species: | Rabbit |
| Clonality: | Polyclonal |
| Format: | IgG |

Target Details

| | |
|------------------------|--|
| Gene Name: | RPS6KA1 |
| Reactivity: | Mouse |
| Immunogen Type: | Conjugated Peptide |
| Immunogen: | This affinity purified antibody was prepared from whole rabbit serum produced by repeated immunizations with a synthetic peptide corresponding to a C-terminal region of human RSK1 protein. |

Purity/Specificity: This affinity-purified antibody is directed against the human RSK1 protein. The product was affinity purified from monospecific antiserum by immunoaffinity purification. A BLAST analysis was used to suggest cross reactivity with RSK1 proteins from human, rat and mouse. Partial reactivity may occur against RSK2 and RSK3 but has not been tested. Reactivity against homologues from other sources is not known.

Relevant Links:

- [600-401-941 SDS](#)
- [UniProtKB - Q15418](#)
- [NCBI - NP_001006666.1](#)
- [GeneID - 6195](#)

Application Details

Tested Applications: WB

Application Note: This affinity purified antibody has been tested for use in ELISA, western blot, and immunoprecipitation. Specific conditions for reactivity should be optimized by the end user. Expect a predominant band approximately 88 kDa in size corresponding to RSK1 by western blotting in the appropriate cell lysate or extract.

Assay Dilutions: All assays should be optimized by the user. Recommended dilutions (if any) may be listed below.

ELISA: 1:2,000 - 1:5,000

IP: User Optimized

WB: 1:200 - 1:1000

Formulation

Physical State: Liquid (sterile filtered)

Concentration: 1.0 mg/mL by UV absorbance at 280 nm

Buffer: 0.1 M Tris Chloride, 0.5 M Sodium Chloride, pH 8.0

Preservative: 0.01% (w/v) Sodium Azide

Stabilizer: 50% (v/v) Glycerol

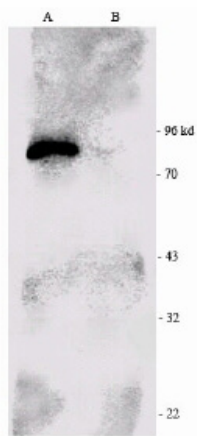
Shipping & Handling

Shipping Condition: Dry Ice

Storage Condition: Store vial at -20° C prior to opening. Aliquot contents and freeze at -20° C or below for extended storage. Avoid cycles of freezing and thawing. Centrifuge product if not completely clear after standing at room temperature. This product is stable for several weeks at 4° C as an undiluted liquid. Dilute only prior to immediate use.

Expiration: Expiration date is one (1) year from date of receipt.

Images



Western Blot

Western-blot analysis of p90 RSK1 immunoprecipitated from the mouse brain extract (B) and using RSK1-HRP as a probe. Immunoprecipitated negative control (A).

Disclaimer

This product is for research use only and is not intended for therapeutic or diagnostic applications. Please contact a technical service representative for more information. All products of animal origin manufactured by Rockland Immunochemicals are derived from starting materials of North American origin. Collection was performed in United States Department of Agriculture (USDA) inspected facilities and all materials have been inspected and certified to be free of disease and suitable for exportation. All properties listed are typical characteristics and are not specifications. All suggestions and data are offered in good faith but without guarantee as conditions and methods of use of our products are beyond our control. All claims must be made within 30 days following the date of delivery. The prospective user must determine the suitability of our materials before adopting them on a commercial scale. Suggested uses of our products are not recommendations to use our products in violation of any patent or as a license under any patent of Rockland Immunochemicals, Inc. If you require a commercial license to use this material and do not have one, then return this material, unopened to: Rockland Inc., P.O. BOX 5199, Limerick, Pennsylvania, USA.