

Datasheet for 600-401-926**iASPP Antibody****Overview**

| | |
|----------------------|--|
| Description: | Anti-iASPP (RABBIT) Antibody - 600-401-926 |
| Item No.: | 600-401-926 |
| Size: | 100 µg |
| Applications: | ELISA, IHC, WB |
| Reactivity: | Human |
| Host Species: | Rabbit |

Product Details

| | |
|----------------------|--|
| Background: | ASPP proteins (ASPP1, ASPP2 and iASPP) represent a new family of p53 binding proteins. ASPP1 and ASPP2 bind and enhance p53-mediated apoptosis. In contrast, the third member, iASPP, functionally inactivates p53. iASPP (also called protein phosphatase 1 regulatory (inhibitor) subunit 13 like protein, Inhibitor of ASPP protein, Protein iASPP, PPP1R13B-like protein and NFkB-interacting protein 1) plays a central role in regulation of apoptosis and transcription via its interaction with NF-kappa-B and p53/TP53 proteins. iASPP blocks transcription of HIV-1 virus by inhibiting the action of both NF-kappa-B and SP1. |
| Synonyms: | rabbit anti-iASPP antibody, inhibitor of apoptosis stimulating protein of p53 antibody, Inhibitor of ASPP protein antibody, RelA-associated inhibitor, NFkB interacting protein 1 antibody, Protein iASPP, NKIP1 antibody, PPP1R13B-like protein antibody, IASPP, NKIP1, PPP1R13BL, RAI, PPP1R13L |
| Host Species: | Rabbit |
| Clonality: | Polyclonal |
| Format: | IgG |

Target Details

| | |
|------------------------|--------------------|
| Gene Name: | PPP1R13L |
| Reactivity: | Human |
| Immunogen Type: | Conjugated Peptide |

| | |
|----------------------------|--|
| Immunogen: | This affinity purified antibody was prepared from whole rabbit serum produced by repeated immunizations with a synthetic peptide corresponding to an internal region near amino acids 775-800 of human iASPP (isoform 1) protein. |
| Purity/Specificity: | This affinity-purified antibody is directed against the human iASPP protein. The product was affinity purified from monospecific antiserum by immunoaffinity purification. A BLAST analysis was used to suggest cross reactivity with iASPP proteins from human, dog and mouse sources. Expect reactivity against both isoform 1 and isoform 2. Partial reactivity may occur against iASPP from bovine. Reactivity against homologues from other sources is not known. |
| Relevant Links: | <ul style="list-style-type: none">• UniProtKB - Q8WUF5• NCBI - 63003907• GeneID - 10848 |

Application Details

| | |
|-----------------------------|--|
| Tested Applications: | ELISA, IHC, WB |
| Application Note: | This affinity purified antibody has been tested for use in ELISA, immunohistochemistry and by western blot. Specific conditions for reactivity should be optimized by the end user. Expect bands approximately 100 kDa and 50 kDa in size corresponding to isoforms 1 and 2 respectively of iASPP protein by western blotting in the appropriate cell lysate or extract. |
| Assay Dilutions: | All assays should be optimized by the user. Recommended dilutions (if any) may be listed below. |
| ELISA: | 1:40,000 - 1:160,000 |
| IHC: | 1:1,000 - 1:5,000 |
| WB: | 1:1,000 - 1:5,000 |

Formulation

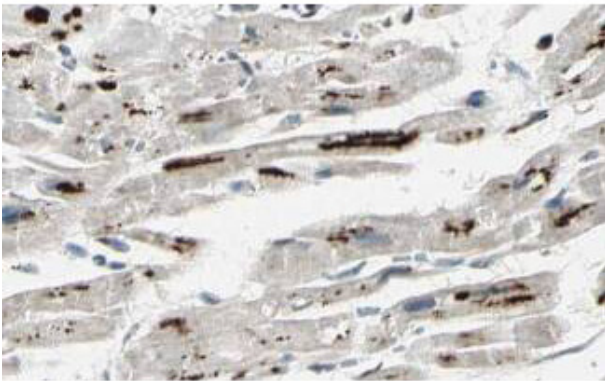
| | |
|------------------------|--|
| Physical State: | Liquid (sterile filtered) |
| Concentration: | 1.1mg/mL by UV absorbance at 280 nm |
| Buffer: | 0.02 M Potassium Phosphate, 0.15 M Sodium Chloride, pH 7.2 |
| Preservative: | 0.01% (w/v) Sodium Azide |
| Stabilizer: | None |

Shipping & Handling

| | |
|----------------------------|---------|
| Shipping Condition: | Dry Ice |
|----------------------------|---------|

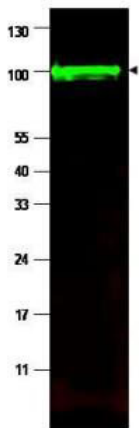
| | |
|---------------------------|---|
| Storage Condition: | Store vial at -20° C prior to opening. Aliquot contents and freeze at -20° C or below for extended storage. Avoid cycles of freezing and thawing. Centrifuge product if not completely clear after standing at room temperature. This product is stable for several weeks at 4° C as an undiluted liquid. Dilute only prior to immediate use. |
| Expiration: | Expiration date is one (1) year from date of receipt. |

Images



Immunohistochemistry

Rockland's Affinity Purified anti-iASPP antibody shows strong cytoplasmic and membranous staining of myocytes in human heart tissue. Tissue was formalin-fixed and paraffin embedded. Brown color indicates presence of protein, blue color shows cell nuclei. Personal Communication, Kenneth Wester, www.proteinatlas.org, Uppsala, Sweden.



Western Blot

Western blot using Rockland's affinity purified anti-iASPP antibody shows detection of a band at ~100 kDa (arrowhead) corresponding to isoform 1 of iASPP in MCF7 whole cell lysates (p/n W09-000-360). Preincubation with immunizing peptide blocks specific band staining (data not shown). Approximately 35µg of lysate was separated by 4-20% Tris Glycine SDS-PAGE. After blocking, the membrane was probed with the primary antibody diluted to 1:1,500 in 5% BLOTTO/PBS overnight at 4°C. The membrane was washed and reacted with a 1:10,000 dilution of IRDye800 conjugated Gt-a-Rabbit IgG [H&L] (p/n 611-132-122) for 45 min at room temperature (800 nm channel, green). Molecular weight estimation was made by comparison to prestained MW markers. IRDye800 fluorescence image was captured using the Odyssey® Infrared Imaging System developed by LI-COR. IRDye is a trademark of LI-COR, Inc. Other detection systems will yield similar results.

Disclaimer

This product is for research use only and is not intended for therapeutic or diagnostic applications. Please contact a technical service representative for more information. All products of animal origin manufactured by Rockland Immunochemicals are derived from starting materials of North American origin. Collection was performed in United States Department of Agriculture (USDA) inspected facilities and all materials have been inspected and certified to be free of disease and suitable for exportation. All properties listed are typical characteristics and are not specifications. All suggestions and data are offered in good faith but without guarantee as conditions and methods of use of our products are beyond our control. All claims must be made within 30 days following the date of delivery. The prospective user must determine the suitability of our materials before adopting them on a commercial scale. Suggested uses of our products are not recommendations to use our products in violation of any patent or as a license under any patent of Rockland Immunochemicals, Inc. If you require a commercial license to use this material and do not have one, then return this material, unopened to: Rockland Inc., P.O. BOX 5199, Limerick, Pennsylvania, USA.