

Datasheet for 600-401-906**CHK1 Antibody****Overview**

Description:	Anti-CHK1 Yeast (RABBIT) Antibody - 600-401-906
Item No.:	600-401-906
Size:	100 µg
Applications:	ELISA, WB
Reactivity:	<i>S. cerevisiae</i>
Host Species:	Rabbit

Product Details

Background:	CHK1 (also known as serine/threonine-protein kinase CHK1 and checkpoint kinase 1) is involved in cell cycle arrest when DNA damage has occurred or when unligated DNA is present. The kinase controls phosphorylation and abundance of PDS1 to prevent anaphase entry. Also helps prevent mitotic exit. CHK1 is localized within the nucleus.
Synonyms:	rabbit anti-CHK1 Antibody, CHK-1, CHK 1, Serine/threonine-protein kinase CHK1, Checkpoint kinase 1
Host Species:	Rabbit
Clonality:	Polyclonal
Format:	IgG

Target Details

Gene Name:	CHK1
Reactivity:	<i>S. cerevisiae</i>
Immunogen Type:	Conjugated Peptide
Immunogen:	This affinity purified antibody was prepared from whole rabbit serum produced by repeated immunizations with a synthetic peptide corresponding to an internal region near aa 305-330 of <i>S. cerevisiae</i> CHK1.

Purity/Specificity: This affinity purified antibody is directed against yeast CHK1 protein. The product was affinity purified from monospecific antiserum by immunoaffinity purification. Reactivity occurs against yeast CHK1 protein. A BLAST analysis was used to suggest little to no cross reactivity with this protein from other sources.

Relevant Links:

- [UniProtKB - P38147](#)
- [NCBI - 6319751](#)
- [GeneID - 852577](#)

Application Details

Tested Applications: ELISA, WB

Application Note: This affinity purified antibody has been tested for use in ELISA and by western blot. Specific conditions for reactivity should be optimized by the end user. Expect a predominant band approximately 40-60 kDa in size corresponding to CHK1 by western blotting in the appropriate cell lysate or extract.

Assay Dilutions: All assays should be optimized by the user. Recommended dilutions (if any) may be listed below.

ELISA: 1:2,000 - 1:10,000

IP: 1:100

WB: 1:200 - 1:2,000

Formulation

Physical State: Liquid (sterile filtered)

Concentration: 0.73 mg/mL by UV absorbance at 280 nm

Buffer: 0.02 M Potassium Phosphate, 0.15 M Sodium Chloride, pH 7.2

Preservative: 0.01% (w/v) Sodium Azide

Stabilizer: None

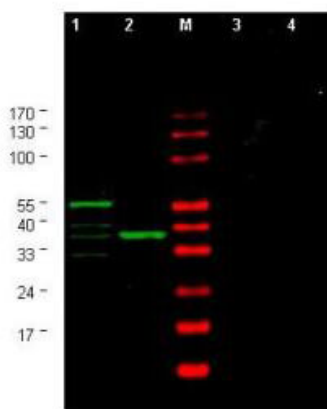
Shipping & Handling

Shipping Condition: Dry Ice

Storage Condition: Store vial at -20° C prior to opening. Aliquot contents and freeze at -20° C or below for extended storage. Avoid cycles of freezing and thawing. Centrifuge product if not completely clear after standing at room temperature. This product is stable for several weeks at 4° C as an undiluted liquid. Dilute only prior to immediate use.

Expiration: Expiration date is one (1) year from date of receipt.

Images



Western Blot

Western blot using Rockland's Affinity Purified anti-Yeast CHK1 antibody shows detection of a bands corresponding to CHK1 in *Saccharomyces cerevisiae* lysates. Two strains of *S.cerevisiae* were tested. Lane 1 shows a predominant band at ~60 kDa. Lane 2 shows a predominant band at ~38 kDa. Specific band staining is blocked when antibody is preincubated for 45 min at room temperature with 50 µg of peptide immunogen (lanes 3 and 4 respectively). Lysates were separated by 4-20% SDS-PAGE and transferred onto nitrocellulose. After blocking, the membrane was probed for 2 h at room temperature with the primary antibody diluted to 1:750 in blocking buffer diluted 1:5 in PBS. The membrane was washed and reacted with a 1:10,000 dilution of IRDye™800 conjugated Gt-a-Rabbit IgG [H&L] MX (611-132-122) for 45 min at room temperature (800 nm channel, green). Molecular weight estimation was made by comparison to prestained MW markers in lane M (700 nm channel, red). IRDye™800 fluorescence image was captured using the Odyssey® Infrared Imaging System developed by LI-COR. IRDye is a trademark of LI-COR, Inc. Other detection systems will yield similar results.

Disclaimer

This product is for research use only and is not intended for therapeutic or diagnostic applications. Please contact a technical service representative for more information. All products of animal origin manufactured by Rockland Immunochemicals are derived from starting materials of North American origin. Collection was performed in United States Department of Agriculture (USDA) inspected facilities and all materials have been inspected and certified to be free of disease and suitable for exportation. All properties listed are typical characteristics and are not specifications. All suggestions and data are offered in good faith but without guarantee as conditions and methods of use of our products are beyond our control. All claims must be made within 30 days following the date of delivery. The prospective user must determine the suitability of our materials before adopting them on a commercial scale. Suggested uses of our products are not recommendations to use our products in violation of any patent or as a license under any patent of Rockland Immunochemicals, Inc. If you require a commercial license to use this material and do not have one, then return this material, unopened to: Rockland Inc., P.O. BOX 5199, Limerick, Pennsylvania, USA.