

Datasheet for 600-401-851**DIA-2 Antibody****Overview**

Description:	Anti-DIA-2 (RABBIT) Antibody - 600-401-851
Item No.:	600-401-851
Size:	100 µg
Applications:	ELISA, WB
Reactivity:	Human
Host Species:	Rabbit

Product Details

Background:	DIA-2 (also called DIA drome, Dia2, DIAPH2, Diaphanous 2, Diaphanous related formin 2, Diaphorase 2, DRF2, POF and POF2) may play a role in the development and normal function of the ovaries. Mutations of this gene have been linked to premature ovarian failure. Alternative splicing results in two protein isoforms. Furthermore, each splice variant undergoes additional splicing in the 3' UTR. Overall 4 splice variants have been described. DIA-2 is expressed in testis, ovary, small intestine, prostate, lung, liver, kidney and leukocytes and can be found from E16 in ovary and testis and during P6-P16 during differentiation of ovarian follicles. Isoform 1 is referred to as DIA-156, whereas isoform 2 is called DIA-12C.
Synonyms:	rabbit anti-DIA-2 Antibody, DIA 2, DIA drome, DIA2, DIAPH2, Diaphanous 2, Diaphanous related formin 2, Diaphorase 2, DRF2, POF, POF2
Host Species:	Rabbit
Clonality:	Polyclonal
Format:	IgG

Target Details

Gene Name:	DIAPH2
Reactivity:	Human
Immunogen Type:	Conjugated Peptide

Immunogen:	This affinity purified antibody was prepared from whole rabbit serum produced by repeated immunizations with a synthetic peptide corresponding to amino acid residues at the C-Terminus of Human DIA-2.
Purity/Specificity:	This affinity purified antibody is directed against human DIA-2. The product was affinity purified from monospecific antiserum by immunoaffinity purification. A BLAST analysis was used to suggest reactivity with this protein from human based on 100% homology for the immunogen sequence. However, cross reactivity is expected with mouse DIA-2 based on a 93% homology to the immunogen sequence. Cross reactivity with DIA-2 homologues from other sources has not been determined.
Relevant Links:	<ul style="list-style-type: none">• NCBI - 5803003• UniProtKB - O60879• GenelD - 1730

Application Details

Tested Applications:	ELISA, WB
Application Note:	This affinity purified antibody has been tested for use in ELISA and by western blot. Specific conditions for reactivity should be optimized by the end user. Expect a band approximately 125 kDa in size corresponding to DIA-2 by western blotting in the appropriate cell lysate or extract. Alternate splice variants have been described for this protein. This antibody will only react with DIA-156 (isoform 1 of DIA-2).
Assay Dilutions:	All assays should be optimized by the user. Recommended dilutions (if any) may be listed below.
ELISA:	1:12,000 - 1:60,000
IP:	1:100
WB:	1:1,000 - 1:6,000

Formulation

Physical State:	Liquid (sterile filtered)
Concentration:	1.4 mg/mL by UV absorbance at 280 nm
Buffer:	0.02 M Potassium Phosphate, 0.15 M Sodium Chloride, pH 7.2
Preservative:	0.01% (w/v) Sodium Azide
Stabilizer:	None

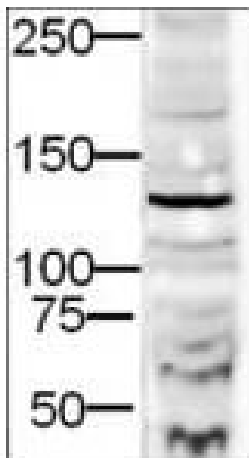
Shipping & Handling

Shipping Condition: Dry Ice

Storage Condition: Store vial at -20° C prior to opening. Aliquot contents and freeze at -20° C or below for extended storage. Avoid cycles of freezing and thawing. Centrifuge product if not completely clear after standing at room temperature. This product is stable for several weeks at 4° C as an undiluted liquid. Dilute only prior to immediate use.

Expiration: Expiration date is one (1) year from date of receipt.

Images



Western Blot

Western blot using Rockland's Affinity Purified anti-DIA-2 antibody shows detection of a 132-kDa band corresponding to DIA-2 in a lysate prepared from human derived HEK293 cells. Approximately 20 ug of lysate was run on a SDS-PAGE and transferred onto nitrocellulose followed by reaction with a 1:500 dilution of anti-DIA-2 antibody. Detection occurred using a 1:5,000 dilution of HRP-labeled Goat anti-Rabbit IgG for 1 hour at room temperature. A chemiluminescence system was used for signal detection (Roche) using a 1 min exposure time.

Disclaimer

This product is for research use only and is not intended for therapeutic or diagnostic applications. Please contact a technical service representative for more information. All products of animal origin manufactured by Rockland Immunochemicals are derived from starting materials of North American origin. Collection was performed in United States Department of Agriculture (USDA) inspected facilities and all materials have been inspected and certified to be free of disease and suitable for exportation. All properties listed are typical characteristics and are not specifications. All suggestions and data are offered in good faith but without guarantee as conditions and methods of use of our products are beyond our control. All claims must be made within 30 days following the date of delivery. The prospective user must determine the suitability of our materials before adopting them on a commercial scale. Suggested uses of our products are not recommendations to use our products in violation of any patent or as a license under any patent of Rockland Immunochemicals, Inc. If you require a commercial license to use this material and do not have one, then return this material, unopened to: Rockland Inc., P.O. BOX 5199, Limerick, Pennsylvania, USA.