

**Datasheet for 600-401-848****ZIC-2 Antibody****Overview**

<b>Description:</b>	Anti-ZIC-2 (RABBIT) Antibody - 600-401-848
<b>Item No.:</b>	600-401-848
<b>Size:</b>	100 µg
<b>Applications:</b>	ELISA, WB
<b>Reactivity:</b>	Mouse, Rat
<b>Host Species:</b>	Rabbit

**Product Details**

<b>Background:</b>	ZIC2 (also known as zinc finger protein of the cerebellum 2, HPE5, Zic family member 2 and odd-paired Drosophila homolog) is a nuclear protein that functions as a transcriptional repressor and may regulate tissue specific expression of dopamine receptor D1. In mouse, knockout of Zic1 leads to aplasia of cerebellum and skeletal abnormalities. Mutation in Zic2 and Zic3 in mouse and/or human cause holoprosencephaly and heterotaxis, respectively. Holoprosencephaly is the most common structural anomaly of the human brain.
<b>Synonyms:</b>	rabbit anti-ZIC-2 antibody, ZIC 2, ZIC2, zinc finger protein of the cerebellum 2, Zinc finger protein ZIC 2, HPE5, Zic family member 2 and odd-paired Drosophila homolog
<b>Host Species:</b>	Rabbit
<b>Clonality:</b>	Polyclonal
<b>Format:</b>	IgG

**Target Details**

<b>Gene Name:</b>	Zic2
<b>Reactivity:</b>	Mouse, Rat
<b>Immunogen Type:</b>	Conjugated Peptide
<b>Immunogen:</b>	This affinity purified antibody was prepared from whole rabbit serum produced by repeated immunizations with a synthetic peptide corresponding to an internal region near amino acids 180-210 of Mouse ZIC-2.

**Purity/Specificity:** This affinity purified antibody is directed against mouse ZIC2 protein. The product was affinity purified from monospecific antiserum by immunoaffinity purification. A BLAST analysis was used to suggest reactivity with this protein from human, chimpanzee, mouse, rat and dog based on 100% homology for the immunogen sequence. Expect cross reactivity with ZIC2 from chicken, zebrafish and frog as the core 16 amino acid residues within the immunogen sequence show very high degrees of homology with ZIC2 from these sources. Cross reactivity with ZIC2 homologues from other sources has not been determined.

**Relevant Links:**

- [UniProtKB - Q62520](#)

## Application Details

**Tested Applications:** ELISA, WB

**Application Note:** This affinity purified antibody has been tested for use in ELISA and by western blot. Specific conditions for reactivity should be optimized by the end user. Expect a band approximately 55 kDa in size corresponding to ZIC2 by western blotting in the appropriate cell lysate or extract.

**Assay Dilutions:** All assays should be optimized by the user. Recommended dilutions (if any) may be listed below.

**ELISA:** 1:10,000 - 1:50,000

**WB:** 1:500 - 1:2,000

## Formulation

**Physical State:** Liquid (sterile filtered)

**Concentration:** 1.0 mg/mL by UV absorbance at 280 nm

**Buffer:** 0.02 M Potassium Phosphate, 0.15 M Sodium Chloride, pH 7.2

**Preservative:** 0.01% (w/v) Sodium Azide

**Stabilizer:** None

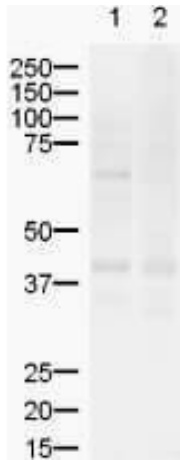
## Shipping & Handling

**Shipping Condition:** Dry Ice

**Storage Condition:** Store vial at -20° C prior to opening. Aliquot contents and freeze at -20° C or below for extended storage. Avoid cycles of freezing and thawing. Centrifuge product if not completely clear after standing at room temperature. This product is stable for several weeks at 4° C as an undiluted liquid. Dilute only prior to immediate use.

**Expiration:** Expiration date is one (1) year from date of receipt.

## Images



### Western Blot

Western blot using Rockland's Affinity Purified anti-ZIC2 antibody. Lane 1: mouse brain lysate. Lane 2: rat brain lysate. Load: 20  $\mu$ g. Primary Antibody: anti-ZIC2 at 1:500 dilution. The upper band in the mouse brain lysate represents Zic2 ~55 kDa.

## Disclaimer

This product is for research use only and is not intended for therapeutic or diagnostic applications. Please contact a technical service representative for more information. All products of animal origin manufactured by Rockland Immunochemicals are derived from starting materials of North American origin. Collection was performed in United States Department of Agriculture (USDA) inspected facilities and all materials have been inspected and certified to be free of disease and suitable for exportation. All properties listed are typical characteristics and are not specifications. All suggestions and data are offered in good faith but without guarantee as conditions and methods of use of our products are beyond our control. All claims must be made within 30 days following the date of delivery. The prospective user must determine the suitability of our materials before adopting them on a commercial scale. Suggested uses of our products are not recommendations to use our products in violation of any patent or as a license under any patent of Rockland Immunochemicals, Inc. If you require a commercial license to use this material and do not have one, then return this material, unopened to: Rockland Inc., P.O. BOX 5199, Limerick, Pennsylvania, USA.