

**Datasheet for 600-401-846****SLIT2 Antibody****Overview**

<b>Description:</b>	Anti-SLIT-2 (RABBIT) Antibody - 600-401-846
<b>Item No.:</b>	600-401-846
<b>Size:</b>	100 µg
<b>Applications:</b>	ELISA, IHC, WB
<b>Reactivity:</b>	Human, Chicken
<b>Host Species:</b>	Rabbit

**Product Details**

**Background:** SLIT-2 is thought to act as a molecular guidance cue in cellular migration, and its function appears to be mediated by interaction with roundabout homologue receptors. SLIT-1 and SLIT-2 seem to be essential for midline guidance in the forebrain by acting as repulsive signals preventing inappropriate midline crossing by axons projecting from the olfactory bulb. In spinal chord development SLIT-2 may play a role in guiding commissural axons once they reach the floor plate by modulating the response to netrin. In vitro, SLIT-2 silences the attractive effect of NTN1 but not its growth-stimulatory effect and silencing requires the formation of a ROBO1-DCC complex. In vitro, only commissural axons that crossed the midline responded to SLIT-2. In the developing visual system this protein functions as a repellent for retinal ganglion axons by providing a repulsion that directs these axons along their appropriate paths prior to, and after passage through, the optic chiasm. SLIT-2 is a secreted protein predominantly expressed in fetal lung and kidney, and adult spinal cord. Weak expression is observed in adult adrenal gland, thyroid, trachea and other tissues examined. Multiple isoforms have been reported for this product.

<b>Synonyms:</b>	rabbit anti-SLIT-2 antibody, SLIT2, SLIT 2, Slit homolog 2 protein, SLIL3, SLIL-3 antibody
<b>Host Species:</b>	Rabbit
<b>Clonality:</b>	Polyclonal
<b>Format:</b>	IgG

**Target Details**

<b>Gene Name:</b>	SLIT2
-------------------	-------

<b>Reactivity:</b>	Human, Chicken
<b>Immunogen Type:</b>	Conjugated Peptide
<b>Immunogen:</b>	This affinity purified antibody was prepared from whole rabbit serum produced by repeated immunizations with a synthetic peptide corresponding aa 475-500 of Human SLIT-2 protein.
<b>Purity/Specificity:</b>	This affinity purified antibody is directed against human SLIT-2 protein. The product was affinity purified from monospecific antiserum by immunoaffinity purification. A BLAST analysis was used to suggest reactivity with this protein from human and chicken based on 100% homology for the immunogen sequence. Expect cross reactivity with SLIT-2 from Tetraodon nigroviridis , as only a single amino acid residue change is found within the immunogen sequence (94% positive by BLAST). The core 13 amino acids of the immunogen are also 100% homologous to SLIT-2 from mouse, rat, bovine and Xenopus laevis. Cross reactivity with SLIT-2 homologues from other sources has not been determined.
<b>Relevant Links:</b>	<ul style="list-style-type: none"><li>• <a href="#">UniProtKB - O94813</a></li><li>• <a href="#">NCBI - 4759146</a></li><li>• <a href="#">GeneID - 9353</a></li></ul>

## Application Details

<b>Tested Applications:</b>	ELISA, IHC, WB
<b>Application Note:</b>	This affinity purified antibody has been tested for use in ELISA, IHC, and by western blot. Specific conditions for reactivity should be optimized by the end user. Expect a band at ~ 165 kDa corresponding to full-length protein by western blotting in the appropriate cell lysate or extract. For western blotting block the membrane with goat serum. Do not block with non-fat dry milk.
<b>Assay Dilutions:</b>	All assays should be optimized by the user. Recommended dilutions (if any) may be listed below.
<b>ELISA:</b>	1:5,000 - 1:50,000
<b>IHC:</b>	2ug/ml
<b>WB:</b>	1:500 - 1:2,000

## Formulation

<b>Physical State:</b>	Liquid (sterile filtered)
<b>Concentration:</b>	1.11 mg/mL by UV absorbance at 280 nm
<b>Buffer:</b>	0.02 M Potassium Phosphate, 0.15 M Sodium Chloride, pH 7.2
<b>Preservative:</b>	0.01% (w/v) Sodium Azide

**Stabilizer:** None

---

## Shipping & Handling

**Shipping Condition:** Dry Ice

---

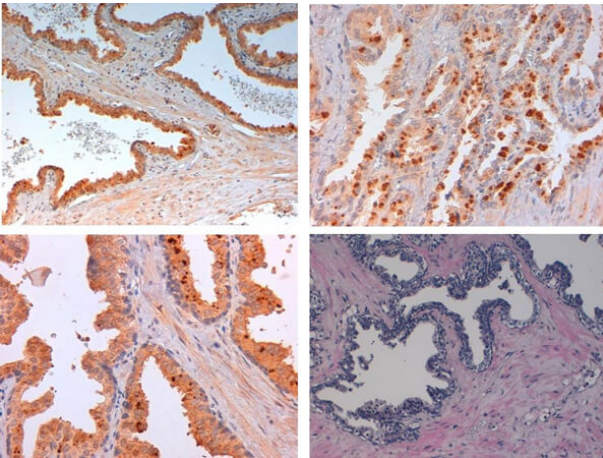
**Storage Condition:** Store vial at -20° C prior to opening. Aliquot contents and freeze at -20° C or below for extended storage. Avoid cycles of freezing and thawing. Centrifuge product if not completely clear after standing at room temperature. This product is stable for several weeks at 4° C as an undiluted liquid. Dilute only prior to immediate use.

---

**Expiration:** Expiration date is one (1) year from date of receipt.

---

## Images



### Immunohistochemistry

Immunohistochemistry of Rabbit anti SLIT-2 Antibody in human breast carcinoma. Tissue: Human prostate. Fixation: FFPE buffered formalin 10% conc. Ag Retrieval: Heat, Citrate pH 6.2. Pressure Cooker, EDTA pH 9.5 Pressure Cooker. Primary antibody: SLIT2 at 2ug/ml for 1.5 hour @ room Temp. Secondary Ab: MACH 1 HRP POLYMER at 1:50 for 45" RT.



### Western Blot

Western blot using Rockland's Affinity Purified anti-SLIT-2 antibody shows detection of a band at ~165 kDa (arrow) corresponding to SLIT-2 present in a chicken spinal cord whole cell lysate (p/n W03-001-T296). Approximately 30 $\mu$ g of lysate was separated on a 4-20% Tris-Glycine gel by SDS-PAGE and transferred onto nitrocellulose. After blocking the membrane was probed with the primary antibody diluted to 1:1,350. Reaction occurred overnight at 4 $^{\circ}$  C followed by washes and reaction with a 1:10,000 dilution of IRDye800 conjugated Gt-a-Rabbit IgG [H&L] MX (p/n 611-132-122) for 45 min at room temperature (800 nm channel, green). Molecular weight estimation was made by comparison to prestained MW markers in lane M (700 nm channel, red). IRDye<sup>TM</sup>800 fluorescence image was captured using the Odyssey<sup>®</sup> Infrared Imaging System developed by LI-COR. IRDye is a trademark of LI-COR, Inc. Other detection systems will yield similar results.

### Disclaimer

This product is for research use only and is not intended for therapeutic or diagnostic applications. Please contact a technical service representative for more information. All products of animal origin manufactured by Rockland Immunochemicals are derived from starting materials of North American origin. Collection was performed in United States Department of Agriculture (USDA) inspected facilities and all materials have been inspected and certified to be free of disease and suitable for exportation. All properties listed are typical characteristics and are not specifications. All suggestions and data are offered in good faith but without guarantee as conditions and methods of use of our products are beyond our control. All claims must be made within 30 days following the date of delivery. The prospective user must determine the suitability of our materials before adopting them on a commercial scale. Suggested uses of our products are not recommendations to use our products in violation of any patent or as a license under any patent of Rockland Immunochemicals, Inc. If you require a commercial license to use this material and do not have one, then return this material, unopened to: Rockland Inc., P.O. BOX 5199, Limerick, Pennsylvania, USA.