

**Datasheet for 600-401-474****PACRG Antibody****Overview**

<b>Description:</b>	Anti-PACRG (RABBIT) Antibody - 600-401-474
<b>Item No.:</b>	600-401-474
<b>Size:</b>	100 µg
<b>Applications:</b>	ELISA, WB, Other
<b>Reactivity:</b>	Mouse
<b>Host Species:</b>	Rabbit

**Product Details**

<b>Background:</b>	PACRG (also known as Parkin coregulated gene protein and PARK2 coregulated) is a gene located very close to parkin, in reverse orientation on the chromosome. It is thought to be co-transcribed with parkin by a bi-directional promoter between the two genes. PACRG is expressed in all immune tissues, spleen, lymph nodes, thymus, tonsils, leukocyte and bone marrow and is also expressed in heart, brain, skeletal muscle, kidney, lung and pancreas. PACRG is expressed in primary Schwann cells and very weakly by monocyte-derived macrophages, which are the primary host cells of Mycobacterium leprae, the causative agent of leprosy. Splice variants have been described for this protein.
<b>Synonyms:</b>	rabbit anti-PACRG antibody, Parkin coregulated gene protein, GLUP antibody, Molecular chaperone/chaperonin binding protein antibody, PARK 2 coregulated antibody, PARK2 coregulated antibody
<b>Host Species:</b>	Rabbit
<b>Clonality:</b>	Polyclonal
<b>Format:</b>	IgG

**Target Details**

<b>Gene Name:</b>	PACRG
<b>Reactivity:</b>	Mouse
<b>Immunogen Type:</b>	Conjugated Peptide

<b>Immunogen:</b>	This affinity purified antibody was prepared from whole rabbit serum produced by repeated immunizations with a synthetic peptide corresponding to an internal region of Human PACRG protein.
<b>Purity/Specificity:</b>	This affinity purified antibody is directed against human PACRG protein. The product was affinity purified from monospecific antiserum by immunoaffinity purification. A BLAST analysis was used to suggest reactivity with this protein from human, mouse and chicken based on 100% homology for the immunogen sequence. Cross reactivity with PACRG protein from zebrafish and rat may occur as this sequence only varies by one amino acid residue (94% homology). Expect reactivity with both splice variants of this protein. Cross reactivity with PACRG homologues from other sources has not been determined.
<b>Relevant Links:</b>	<ul style="list-style-type: none"><li>• <a href="#">UniProtKB - Q96M98</a></li><li>• <a href="#">NCBI - 21040407</a></li><li>• <a href="#">GeneID - 135138</a></li></ul>

## Application Details

<b>Tested Applications:</b>	ELISA, WB
<b>Suggested Applications:</b>	Other (Based on references)
<b>Application Note:</b>	This affinity purified antibody has been tested for use in ELISA and western blot.
<b>Assay Dilutions:</b>	All assays should be optimized by the user. Recommended dilutions (if any) may be listed below.
<b>ELISA:</b>	1:2,000 - 1:10,000
<b>WB:</b>	1:500 - 1:3,000

## Formulation

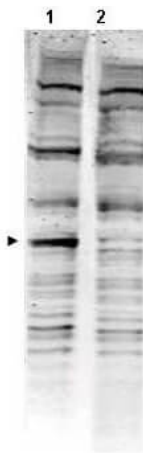
<b>Physical State:</b>	Liquid (sterile filtered)
<b>Concentration:</b>	1.6 mg/mL by UV absorbance at 280 nm
<b>Buffer:</b>	0.02 M Potassium Phosphate, 0.15 M Sodium Chloride, pH 7.2
<b>Preservative:</b>	0.01% (w/v) Sodium Azide
<b>Stabilizer:</b>	None

## Shipping & Handling

<b>Shipping Condition:</b>	Dry Ice
----------------------------	---------

<b>Storage Condition:</b>	Store vial at -20° C prior to opening. Aliquot contents and freeze at -20° C or below for extended storage. Avoid cycles of freezing and thawing. Centrifuge product if not completely clear after standing at room temperature. This product is stable for several weeks at 4° C as an undiluted liquid. Dilute only prior to immediate use.
<b>Expiration:</b>	Expiration date is one (1) year from date of receipt.

## Images



### Western Blot

Western blot using Rockland's Affinity Purified anti-PACRG antibody shows detection of a band ~40 kDa corresponding to human PACRG (arrowhead lane 1). Specific reactivity with this band is blocked when the antibody is pre-incubated with the immunizing peptide (lane 2). Approximately 35 ug of a mouse embryonic fibroblast (MEF) whole cell (p/n W10-001-371) lysate was separated by 4-20% SDS-PAGE and transferred onto nitrocellulose. After blocking the membrane was probed with the primary antibody diluted to 1:1,500 for 2h at room temperature followed by washes and reaction with a 1:10,000 dilution of IRDye800 conjugated Gt-a-Rabbit IgG [H&L] MX (611-132-122) for 45 min at room temperature. IRDye800 fluorescence image was captured using the Odyssey® Infrared Imaging System developed by LI-COR. IRDye is a trademark of LI-COR, Inc. Other detection systems will yield similar results.

## References

- Koch A et al. Proteasomal inhibition reduces parkin mRNA in PC12 and SH-SY5Y cells. *Parkinsonism Relat Disord.* (2009)

## Disclaimer

This product is for research use only and is not intended for therapeutic or diagnostic applications. Please contact a technical service representative for more information. All products of animal origin manufactured by Rockland Immunochemicals are derived from starting materials of North American origin. Collection was performed in United States Department of Agriculture (USDA) inspected facilities and all materials have been inspected and certified to be free of disease and suitable for exportation. All properties listed are typical characteristics and are not specifications. All suggestions and data are offered in good faith but without guarantee as conditions and methods of use of our products are beyond our control. All claims must be made within 30 days following the date of delivery. The prospective user must determine the suitability of our materials before adopting them on a commercial scale. Suggested uses of our products are not recommendations to use our products in violation of any patent or as a license under any patent of Rockland Immunochemicals, Inc. If you require a commercial license to use this material and do not have one, then return this material, unopened to: Rockland Inc., P.O. BOX 5199, Limerick, Pennsylvania, USA.