

**Datasheet for 600-401-461****MAD2L1 Antibody****Overview**

<b>Description:</b>	Anti-MAD2L1 (RABBIT) Antibody - 600-401-461
<b>Item No.:</b>	600-401-461
<b>Size:</b>	100 µg
<b>Applications:</b>	ELISA, WB
<b>Reactivity:</b>	Human
<b>Host Species:</b>	Rabbit

**Product Details**

<b>Background:</b>	MAD2L1 (also called mitotic spindle assembly checkpoint protein, MAD2A, MAD2-like 1 and HsMAD2) is a component of the mitotic spindle assembly checkpoint monitors the process of kinetochore-spindle attachment and delays the onset of anaphase when this process is not complete. MAD2L1 inhibits the activity of the anaphase-promoting complex by sequestering CDC20 until all chromosomes are aligned at the metaphase plate. MAD2L1 is related to the MAD2L2 gene located on chromosome 1. A MAD2 pseudogene has been mapped to chromosome 14. This protein has a nuclear localization.
<b>Synonyms:</b>	rabbit anti-MAD2L1 antibody, MAD2, MAD2-like protein 1, HsMAD2, Mitotic arrest deficient 2-like protein 1, Mitotic spindle assembly checkpoint protein MAD2A
<b>Host Species:</b>	Rabbit
<b>Clonality:</b>	Polyclonal
<b>Format:</b>	IgG

**Target Details**

<b>Gene Name:</b>	MAD2L1
<b>Reactivity:</b>	Human
<b>Immunogen Type:</b>	Conjugated Peptide
<b>Immunogen:</b>	This affinity purified antibody was prepared from whole rabbit serum produced by repeated immunizations with a synthetic peptide corresponding to N-terminal region near amino acid residues 1-25 of Human MAD2L1 protein.

**Purity/Specificity:** This affinity purified antibody is directed against human MAD2L1 protein. The product was affinity purified from monospecific antiserum by immunoaffinity purification. A BLAST analysis was used to suggest reactivity with this protein from human, dog, macaque, chimpanzee and gecko based on 100% homology for the immunogen sequence. Cross reactivity with MAD2L1 may occur from mouse and chicken sources, as only a two amino acid residue change is found within the immunogen sequence (90% positive by BLAST). Cross reactivity with MAD2L1 homologues from other sources has not been determined.

**Relevant Links:**

- [UniProtKB - Q13257](#)
- [NCBI - 4505067](#)
- [GeneID - 4085](#)

## Application Details

**Tested Applications:** ELISA, WB

**Application Note:** This affinity purified antibody has been tested for use in ELISA and by western blot. Specific conditions for reactivity should be optimized by the end user. Expect a predominant band at ~ 24 kDa corresponding to full length protein by western blotting in the appropriate cell lysate or extract.

**Assay Dilutions:** All assays should be optimized by the user. Recommended dilutions (if any) may be listed below.

**ELISA:** 1:2,000 - 1:10,000

**IF:** User Optimized

**WB:** 1:500 - 1:2,000

## Formulation

**Physical State:** Liquid (sterile filtered)

**Concentration:** 1.19 mg/mL by UV absorbance at 280 nm

**Buffer:** 0.02 M Potassium Phosphate, 0.15 M Sodium Chloride, pH 7.2

**Preservative:** 0.01% (w/v) Sodium Azide

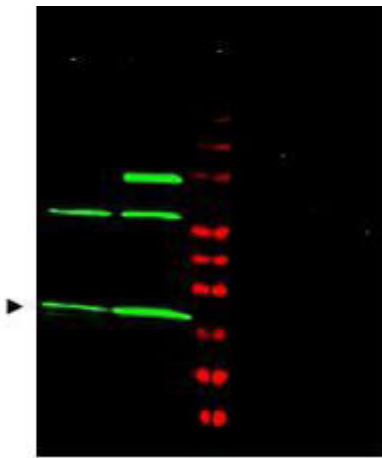
**Stabilizer:** None

## Shipping & Handling

**Shipping Condition:** Dry Ice

<b>Storage Condition:</b>	Store vial at -20° C prior to opening. Aliquot contents and freeze at -20° C or below for extended storage. Avoid cycles of freezing and thawing. Centrifuge product if not completely clear after standing at room temperature. This product is stable for several weeks at 4° C as an undiluted liquid. Dilute only prior to immediate use.
<b>Expiration:</b>	Expiration date is one (1) year from date of receipt.

## Images



### Western Blot

Western blot using Rockland's Affinity Purified anti-MAD2L1 antibody shows detection of a predominant band at ~24 kDa corresponding to MAD2L1 (arrowhead) present in Jurkat (p/n W09-001-370) [lane 1] and HeLa (p/n W09-000-364) [lane 2] whole cell lysates using the 800 nm channel (green). The identity of the higher molecular weight bands is unknown, although they may represent complexes of MAD2L1 with related binding proteins. Specific band reactivity is blocked when the antibody is pre-incubated with immunizing peptide (lanes 4 and 5 respectively) which completely blocks antibody staining. ~ 35µg of lysate was separated on a 4-20% Tris-glycine gel by SDS-PAGE and transferred onto nitrocellulose. After blocking the membrane was probed with the primary antibody diluted to 1:1200. Incubation was 2h at room temperature followed by washes and reaction with a 1:10,000 dilution of IRDye™800 conjugated Gt-a-Rabbit IgG [H&L] MXHu (p/n 611-432-122) for 45 min at room temperature. Molecular weight markers were used for size comparison using the 700 nm channel (lane 3). IRDye™800 fluorescence image was captured using the Odyssey® Infrared Imaging System developed by LI-COR. IRDye is a trademark of LI-COR, Inc. Other detection systems will yield similar results.

## Disclaimer

This product is for research use only and is not intended for therapeutic or diagnostic applications. Please contact a technical service representative for more information. All products of animal origin manufactured by Rockland Immunochemicals are derived from starting materials of North American origin. Collection was performed in United States Department of Agriculture (USDA) inspected facilities and all materials have been inspected and certified to be free of disease and suitable for exportation. All properties listed are typical characteristics and are not specifications. All suggestions and data are offered in good faith but without guarantee as conditions and methods of use of our products are beyond our control. All claims must be made within 30 days following the date of delivery. The prospective user must determine the suitability of our materials before adopting them on a commercial scale. Suggested uses of our products are not recommendations to use our products in violation of any patent or as a license under any patent of Rockland Immunochemicals, Inc. If you require a commercial license to use this material and do not have one, then return this material, unopened to: Rockland Inc., P.O. BOX 5199, Limerick, Pennsylvania, USA.