

Datasheet for 600-401-351**APC10 Antibody****Overview**

Description:	Anti-APC10 (RABBIT) Antibody - 600-401-351
Item No.:	600-401-351
Size:	100 µg
Applications:	ELISA, WB
Reactivity:	Human
Host Species:	Rabbit

Product Details

Background:	APC (Anaphase-Promoting Complex or Cyclosome) is a ubiquitin ligase which specifically targets mitotic regulatory factors such as Pds1/Cut2 and cyclin B. It was found that APC10/Doc1 is localized in centrosomes and mitotic spindles throughout mitosis, while it is also localized in kinetochores from prophase to anaphase and in mid-body in telophase and cytokinesis. These results strongly support the notion that human APC10/Doc1 may be one of the APC core subunits rather than the transiently associated regulatory factor.
Synonyms:	rabbit anti-APC10 antibody, APC-10, APC 10, ANAPC10, ANAPC-10, APC, Anaphase Promoting Complex, Cyclosome subunit 10, anaphase-promoting complex subunit 10
Host Species:	Rabbit
Clonality:	Polyclonal
Format:	IgG

Target Details

Gene Name:	ANAPC10
Reactivity:	Human
Immunogen Type:	Conjugated Peptide
Immunogen:	This affinity purified antibody was prepared from whole rabbit serum produced by repeated immunizations with a synthetic peptide corresponding to amino acids near the amino terminus of human APC10.

Purity/Specificity: This is an affinity purified antibody produced by immunoaffinity chromatography using the immunizing peptide after immobilization to a solid phase.

Relevant Links:

- [NCBI - 150170706](#)
- [UniProtKB - Q9UM13](#)
- [GeneID - 10393](#)

Application Details

Tested Applications: ELISA, WB

Application Note: This affinity purified antibody has been tested for use in ELISA against the immunizing peptide and by western blotting against various cell lysates. Reactivity in other immunoassays is unknown.

Assay Dilutions: All assays should be optimized by the user. Recommended dilutions (if any) may be listed below.

ELISA: 1:15,000 - 1:80,000

IHC: 1:250 - 1:1,000

IP: 1:100

WB: 1:500 - 1:1,500

Formulation

Physical State: Liquid (sterile filtered)

Concentration: 1.50 mg/mL by UV absorbance at 280 nm

Buffer: 0.02 M Potassium Phosphate, 0.15 M Sodium Chloride, pH 7.2

Preservative: 0.01% (w/v) Sodium Azide

Stabilizer: None

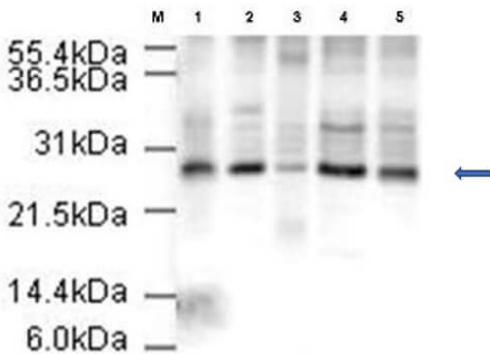
Shipping & Handling

Shipping Condition: Dry Ice

Storage Condition: Store vial at -20° C prior to opening. Aliquot contents and freeze at -20° C or below for extended storage. Avoid cycles of freezing and thawing. Centrifuge product if not completely clear after standing at room temperature. This product is stable for several weeks at 4° C as an undiluted liquid. Dilute only prior to immediate use.

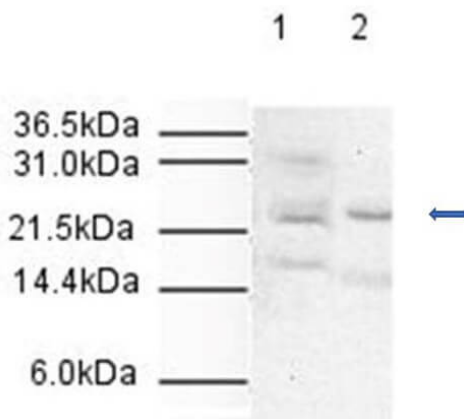
Expiration: Expiration date is one (1) year from date of receipt.

Images



Western Blot

Western Blot of Affinity Purified Rabbit anti-APC10. Lane 1: HeLa nuclear extract (p/n W09-001-367). Lane 2: HeLa whole cell lysate (p/n W09-000-364). Lane 3: A431 whole cell lysate (p/n W09-000-361). Lane 4: Jurkat whole cell lysate (p/n W09-001-370). Lane 5: 293 whole cell lysate (p/n W09-000-365). All lanes contain 20 µg of lysate or extract. Primary Antibody was used at a 1:500 dilution at room temperature for 1 h to detect human APC10 at ~26 kDa (predicted molecular weight is 21 kDa). After subsequent washing, a 1:5,000 dilution of HRP conjugated Gt-a-Rabbit IgG (p/n 611-1302) was used for visualization. Exposure time was 4 min.



Western Blot

Western Blot of Affinity Purified Rabbit Anti-APC10. Lane 1: HeLa whole cell lysate (p/n W09-000-364). Lane 2: HeLa Nuclear lysate (p/n W09-001-367). Approximately 20 µg of each lysate was loaded onto a 10% SDS-PAGE gel. Primary Antibody was used at a 1:500 dilution at room temperature for 1 h. After subsequent washing, a 1:2,000 dilution of HRP conjugated Gt-a-Rabbit IgG (p/n 611-1302) was used for visualization. Exposure time was 5 min. The expected molecular weight of human APC10 is 21 kDa.

Disclaimer

This product is for research use only and is not intended for therapeutic or diagnostic applications. Please contact a technical service representative for more information. All products of animal origin manufactured by Rockland Immunochemicals are derived from starting materials of North American origin. Collection was performed in United States Department of Agriculture (USDA) inspected facilities and all materials have been inspected and certified to be free of disease and suitable for exportation. All properties listed are typical characteristics and are not specifications. All suggestions and data are offered in good faith but without guarantee as conditions and methods of use of our products are beyond our control. All claims must be made within 30 days following the date of delivery. The prospective user must determine the suitability of our materials before adopting them on a commercial scale. Suggested uses of our products are not recommendations to use our products in violation of any patent or as a license under any patent of Rockland Immunochemicals, Inc. If you require a commercial license to use this material and do not have one, then return this material, unopened to: Rockland Inc., P.O. BOX 5199, Limerick, Pennsylvania, USA.