

## Datasheet for 600-401-254

## Mouse Serum Albumin Antibody

### Overview

<b>Description:</b>	Anti-Mouse Serum Albumin (RABBIT) Antibody - 600-401-254
<b>Item No.:</b>	600-401-254
<b>Size:</b>	1 mg
<b>Applications:</b>	ELISA, WB, EM
<b>Reactivity:</b>	Mouse
<b>Host Species:</b>	Rabbit

### Product Details

<b>Background:</b>	Anti-Mouse Serum Albumin antibody detects Serum Albumin. Serum albumin is the main protein of plasma. It has a good binding capacity for water, Ca <sup>2+</sup> , Na <sup>+</sup> , K <sup>+</sup> , fatty acids, hormones, bilirubin and drugs. Its main function is the regulation of the colloidal osmotic pressure of blood. ALB is the major zinc transporter in plasma; it typically binds about 80% of all plasma zinc. Mouse serum antibody, BSA antibody, and other albumin antibodies are ideal for investigators involved in Cell Signaling, Neuroscience, and Signal Transduction research.
<b>Synonyms:</b>	rabbit anti-serum albumin antibody, Alb 1 antibody, Alb-1 antibody, Albumin 1 antibody, Albumin antibody, Alb1 antibody, rabbit anti-MSA antibody
<b>Host Species:</b>	Rabbit
<b>Clonality:</b>	Polyclonal
<b>Format:</b>	IgG

### Target Details

<b>Gene Name:</b>	Alb
<b>Reactivity:</b>	Mouse
<b>Immunogen Type:</b>	Native Protein
<b>Immunogen:</b>	Anti-Mouse Serum Albumin Antibody was produced by repeated immunizations with mouse serum albumin.

**Purity/Specificity:** Mouse Serum Albumin antibody was prepared from monospecific antiserum by immunoaffinity chromatography using purified mouse serum albumin. Assay by immunoelectrophoresis resulted in a single precipitin arc against anti-Rabbit Serum. Analysis by SDS-PAGE was used to determine that this preparation is substantially free of aggregates and shows a banding pattern consistent with purified Rabbit IgG.

**Relevant Links:**

- [UniProtKB - P07724](#)
- [GeneID - 11657](#)

## Application Details

**Tested Applications:** ELISA, WB

**Suggested Applications:** EM (Based on references)

**Application Note:** Anti-Mouse Serum Albumin antibody has been tested by ELISA and western blot and is assayed against 1.0 µg of Mouse Serum Albumin in a standard ELISA using Peroxidase conjugated Affinity Purified Goat anti-Rabbit IgG [H&L] MX code #611-103-122 and TMB as a substrate for 30 minutes at room temperature.

**Assay Dilutions:** All assays should be optimized by the user. Recommended dilutions (if any) may be listed below.

**ELISA:** 1:20,000 - 1:100,000

**IHC:** 1:500 - 1:2,500

**WB:** 1:2,000 - 1:10,000

**Other:** TEM - User Optimized

## Formulation

**Physical State:** Liquid (sterile filtered)

**Concentration:** 1.0 mg/mL by UV absorbance at 280 nm

**Buffer:** 0.02 M Potassium Phosphate, 0.15 M Sodium Chloride, pH 7.2

**Preservative:** 0.01% (w/v) Sodium Azide

**Stabilizer:** None

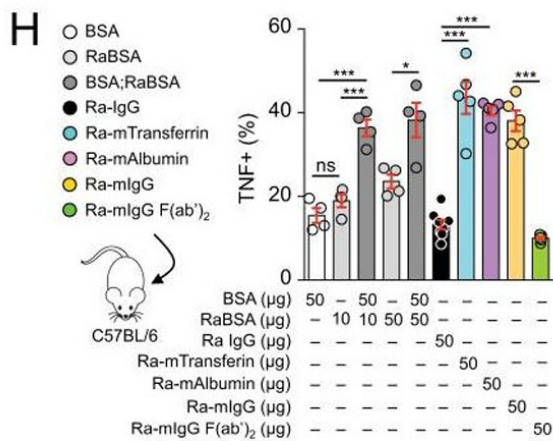
## Shipping & Handling

**Shipping Condition:** Dry Ice

**Storage Condition:** Store vial at -20° C prior to opening. Aliquot contents and freeze at -20° C or below for extended storage. Avoid cycles of freezing and thawing. Centrifuge product if not completely clear after standing at room temperature. This product is stable for several weeks at 4° C as an undiluted liquid. Dilute only prior to immediate use.

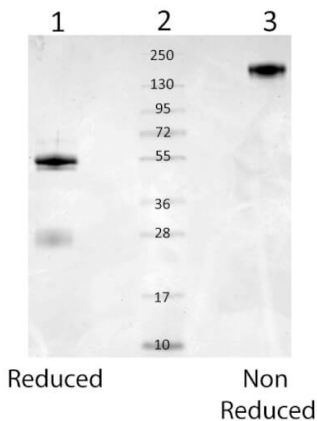
**Expiration:** Expiration date is one (1) year from date of receipt.

Images



Figure

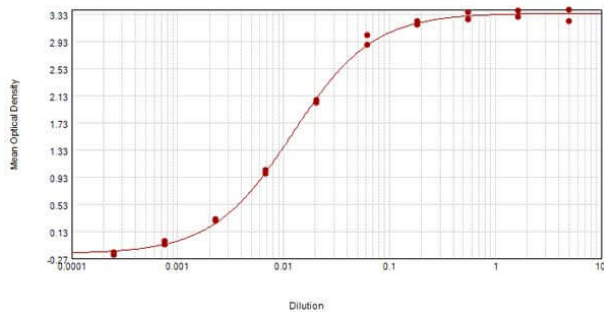
FcγRIV-dependent uptake and activation of kidney, but not dermal, macrophages by small immune complexes, 'auto' antibodies, and NZWxBXSB serum. (H) TNF staining in kidney F4/80bright macrophages from wt mice 1 hour after i.v. injection of the indicated amounts of BSA, RaBSA, BSA;RaBSA, rabbit IgG (Ra-IgG), rabbit anti-mouse transferrin (Ra-mTransferrin) [p/n 600-401-255], rabbit anti-mouse albumin (Ra-mAlbumin) [p/n 600-401-254], rabbit anti-mouse IgG (Ra-mIgG) [p/n 610-4102] or Ra-mIgG (Fab')<sub>2</sub> [p/n 310-4102]. N= 4–5 mice per treatment. Fig 5. PMID: 27477514.



SDS-PAGE

SDS-PAGE of rabbit anti-Mouse Serum Albumin. Lane 1: mouse serum albumin reduced. Lane 2: molecular weight. Lane 3: mouse serum albumin non-reduced. Load: 1.0 µg. Predicted/Observed size: Analysis by SDS-PAGE shows a banding pattern consistent with purified Rabbit IgG. Other band(s): none.

### Anti-Mouse Serum Albumin Sensitivity

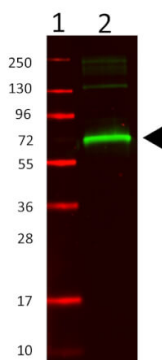


### ELISA

ELISA results of purified Rabbit anti-Mouse Serum Albumin Antibody tested against Mouse Serum Albumin. Each well was coated in duplicate with 1.0 µg of conjugate. The starting dilution of antibody was 5µg/ml and the X-axis represents the Log10 of a 3-fold dilution. This titration is a 4-parameter curve fit where the IC50 is defined as the titer of the antibody. Assay performed using 3% fish gel, Goat anti-Rabbit IgG Antibody Peroxidase Conjugated (Min X Bv Ch Gt GP Ham Hs Hu Ms Rt & Sh Serum Proteins) (p/n 611-103-122) and TMB ELISA Peroxidase Substrate (p/n TMBE-1000).

### Western Blot

Western Blot of rabbit anti-mouse serum albumin. Lane 1: molecular weight. Lane 2: mouse serum albumin. Load: 0.1 µg. Primary antibody: MSA antibody at 1:1000 in 1% BSA-TTBS for overnight at 4°C. Secondary antibody: IRDye800™ rabbit secondary antibody at 1:20,000 for 45 min at RT. Block: Blocking Buffer for Fluorescent Western Blotting (p/n MB-070) 30 min at 4°C. Predicted/Observed size: 69 kDa, 72 kDa for MSA. Other band(s): none.



## References

- Stamatiades et al. Immune Monitoring of Trans-endothelial Transport by Kidney-Resident Macrophages. *Cell* (2016)

## Disclaimer

This product is for research use only and is not intended for therapeutic or diagnostic applications. Please contact a technical service representative for more information. All products of animal origin manufactured by Rockland Immunochemicals are derived from starting materials of North American origin. Collection was performed in United States Department of Agriculture (USDA) inspected facilities and all materials have been inspected and certified to be free of disease and suitable for exportation. All properties listed are typical characteristics and are not specifications. All suggestions and data are offered in good faith but without guarantee as conditions and methods of use of our products are beyond our control. All claims must be made within 30 days following the date of delivery. The prospective user must determine the suitability of our materials before adopting them on a commercial scale. Suggested uses of our products are not recommendations to use our products in violation of any patent or as a license under any patent of Rockland Immunochemicals, Inc. If you require a commercial license to use this material and do not have one, then return this material, unopened to: Rockland Inc., P.O. BOX 5199, Limerick, Pennsylvania, USA.