

Datasheet for 600-106-096

Fluorescein Antibody Biotin Conjugated

Overview

Description:	Anti-Fluorescein (GOAT) Antibody Biotin Conjugated - 600-106-096
Item No.:	600-106-096
Size:	1 mg
Applications:	Dot Blot, ELISA, WB
Reactivity:	Fluorescein
Host Species:	Goat

Product Details

Background:	Fluorescein Antibody Biotin Conjugated is designed for immunofluorescence microscopy, fluorescence based plate assays (FLISA) and fluorescent western blotting. This product is also suitable for multiplex analysis, including multicolor imaging, utilizing various commercial platforms.
Synonyms:	goat Anti-FITC antibody biotin conjugation, biotin conjugated goat anti-fluorescein antibody, biotin conjugated goat Anti-FITC antibody, goat anti-fluorescein antibody biotin conjugation
Host Species:	Goat
Conjugate:	Biotin
Clonality:	Polyclonal
Format:	IgG

Target Details

Reactivity:	Fluorescein
Immunogen Type:	Other
Immunogen:	Fluorescein conjugated to Goat IgG

Purity/Specificity: Fluorescein Antibody Biotin Conjugated was prepared from monospecific antiserum by immunoaffinity chromatography using Fluorescein coupled to sepharose beads followed by solid phase adsorption(s) to remove any unwanted reactivities. Assay by immunoelectrophoresis resulted in a single precipitin arc against anti-biotin, anti-Goat Serum and Fluorescein conjugated IgG.

Application Details

Tested Applications:	Dot Blot, ELISA, WB
Application Note:	Anti-Fluorescein Antibody Biotin Conjugated has been tested by ELISA, dot blot and western blot and is suitable for immunoblotting, ELISA, in situ hybridization, immunohistochemistry, immunomicroscopy as well as other antibody based assays using streptavidin or avidin conjugates requiring lot-to-lot consistency.
Assay Dilutions:	All assays should be optimized by the user. Recommended dilutions (if any) may be listed below.
ELISA:	1:10,000 - 1:50,000
IHC:	1:1,000 - 1:5,000
WB:	1:2,000 - 1:10,000

Formulation

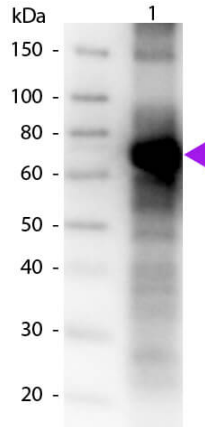
Physical State:	Lyophilized
Concentration:	1.0 mg/mL by UV absorbance at 280 nm
Buffer:	0.02 M Potassium Phosphate, 0.15 M Sodium Chloride, pH 7.2
Preservative:	0.01% (w/v) Sodium Azide
Stabilizer:	10 mg/mL Bovine Serum Albumin (BSA) - Immunoglobulin and Protease free
Reconstitution Volume:	1.0 mL
Reconstitution Buffer:	Restore with deionized water (or equivalent)

Shipping & Handling

Shipping Condition:	Ambient
Storage Condition:	Store vial at 4° C prior to restoration. For extended storage aliquot contents and freeze at -20° C or below. Avoid cycles of freezing and thawing. Centrifuge product if not completely clear after standing at room temperature. This product is stable for several weeks at 4° C as an undiluted liquid. Dilute only prior to immediate use.

Expiration: Expiration date is one (1) year from date of receipt.

Images



Western Blot

Western Blot of Biotin Conjugated Goat Anti-Fluorescein Antibody. Lane 1: BSA conjugated Fluorescein. Lane 2: None. Load: 50 ng per lane. Primary antibody: Fluorescein antibody at 1:1000 for 60 min at RT. Secondary antibody: Peroxidase conjugated Streptavidin secondary antibody at 1:40,000 for 30 min at RT. Block: MB-070 for 30 min at RT. Predicted/Observed size: 70 kDa, 70 kDa for BSA-FITC. Other band(s): None.

Disclaimer

This product is for research use only and is not intended for therapeutic or diagnostic applications. Please contact a technical service representative for more information. All products of animal origin manufactured by Rockland Immunochemicals are derived from starting materials of North American origin. Collection was performed in United States Department of Agriculture (USDA) inspected facilities and all materials have been inspected and certified to be free of disease and suitable for exportation. All properties listed are typical characteristics and are not specifications. All suggestions and data are offered in good faith but without guarantee as conditions and methods of use of our products are beyond our control. All claims must be made within 30 days following the date of delivery. The prospective user must determine the suitability of our materials before adopting them on a commercial scale. Suggested uses of our products are not recommendations to use our products in violation of any patent or as a license under any patent of Rockland Immunochemicals, Inc. If you require a commercial license to use this material and do not have one, then return this material, unopened to: Rockland Inc., P.O. BOX 5199, Limerick, Pennsylvania, USA.