

Datasheet for 600-101-GU8**PDL1 Antibody****Overview**

Description:	Anti-PDL1 (GOAT) Antibody - 600-101-GU8
Item No.:	600-101-GU8
Size:	100 µg
Applications:	ELISA, IF, WB
Reactivity:	Human, Mouse
Host Species:	Goat

Product Details

Background:	PDL1 belongs to the immunoglobulin superfamily and BTN/MOG family. PDL1 is involved in the costimulatory signal, essential for T-cell proliferation and production of IL-10 and IFNG, in an IL-2 dependent and a PDCD1 independent manner. It is up-regulated in T-and B-cells, dendritic cells, keratinocytes and monocytes after LPS and IFNG activation. PDL1 is up-regulated in B-cells activated by surface Ig cross-linking. Interaction with PDCD1 inhibits T-cell proliferation and cytokine production. During infection or inflammation of normal tissue, this interaction is important for preventing autoimmunity by maintaining homeostasis of the immune response. In tumor microenvironments, this interaction provides an immune escape for tumor cells through cytotoxic T-cell inactivation. Expression of this gene in tumor cells is considered to be prognostic in many types of human malignancies, including colon cancer and renal cell carcinoma. Anti-PDL-1 Antibody is useful for researches interested in cancer research, NF-kB pathway research, and the Immune system.
Synonyms:	Goat anti-PDL1 antibody, Programmed cell death 1 ligand 1, CD274, B7H1, PDCD1L1, PDCD1LG1, PDL1, B7 homolog 1, PD-L1, PDCD1 ligand 1, B7-H1, B7 homolog 1, PDL-1, CD274 molecule antibody, MGC142294 antibody, PDL 1
Host Species:	Goat
Clonality:	Polyclonal
Format:	IgG

Target Details

Gene Name:	CD274
-------------------	-------

Reactivity:	Human, Mouse
Immunogen Type:	Conjugated Peptide
Immunogen:	Anti-PDL1 antibody was prepared from whole goat serum produced by repeated immunizations with a synthetic peptide corresponding to an internal portion of human PDL1 conjugated to Keyhole Limpet Hemocyanin (KLH).
Purity/Specificity:	This affinity purified antibody is directed against human PDL1. This product was affinity purified from monospecific antiserum by immunoaffinity purification. Blast analysis of the sequence of the immunogen shows 100% identity with human.
Relevant Links:	<ul style="list-style-type: none">• GenelD - 29126• NCBI - NP_001254635.1• UniProtKB - Q9NZQ7

Application Details

Tested Applications:	ELISA, IF, WB
Application Note:	Anti-PDL-1 Antibody has been tested in Western Blot, ELISA, and IF. Positive control whole cell lysates used MDA-MB-231 p/n (W09-001-GK6) and A549 p/n (W09-001-372) and positive recombinant protein control for western blotting. Expect a band at ~33.3 kDa in western blot using appropriate lysates. Immunofluorescence positive control cell line used was MDA-MB-231 p/n (W09-001-GK6). Although not tested, this antibody is likely functional in flow cytometry and immunoprecipitation.
Assay Dilutions:	All assays should be optimized by the user. Recommended dilutions (if any) may be listed below.
ELISA:	1:10,000-1:50,000
FC:	User Optimized
IF:	10µg/mL
IHC:	1:200
IP:	User Optimized
WB:	1.0 ug/ml

Formulation

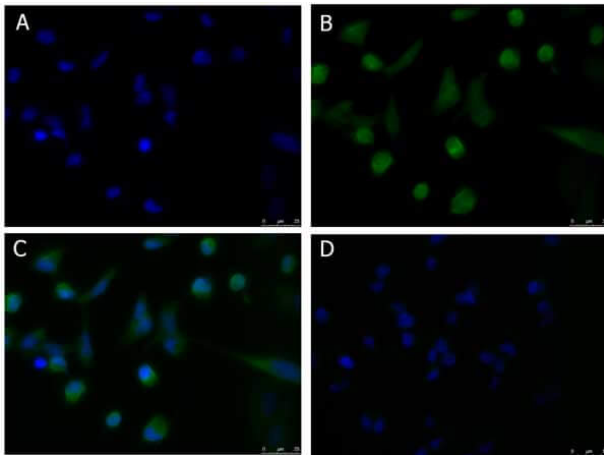
Physical State:	Liquid (sterile filtered)
------------------------	---------------------------

Concentration:	1.07 mg/ml by UV absorbance at 280 nm
Buffer:	0.02 M Potassium Phosphate, 0.15 M Sodium Chloride, pH 7.2
Preservative:	0.01% (w/v) Sodium Azide
Stabilizer:	None

Shipping & Handling

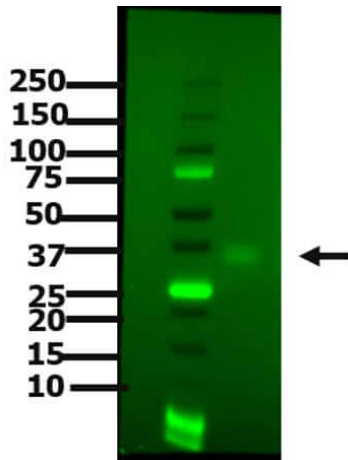
Shipping Condition:	Dry Ice
Storage Condition:	Store vial at -20° C prior to opening. Aliquot contents and freeze at -20° C or below for extended storage. Avoid cycles of freezing and thawing. Centrifuge product if not completely clear after standing at room temperature. This product is stable for several weeks at 4° C as an undiluted liquid. Dilute only prior to immediate use.
Expiration:	Expiration date is one (1) year from date of receipt.

Images



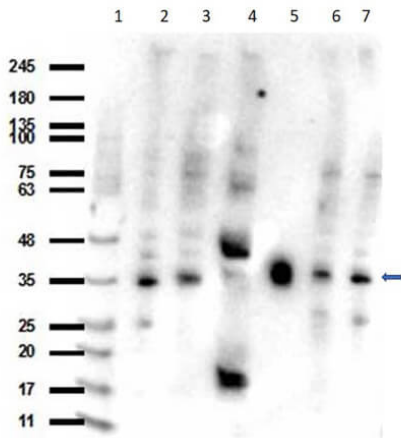
Immunofluorescence Microscopy

Immunofluorescence Microscopy of Goat anti-PDL1 antibody. Cell line: MDA-MB-231 (p/n W09-001-GK6). Fixation: 0.5% PFA. Antigen retrieval: not required. Primary antibody: PDL1 antibody at 10 µg/mL for overnight at 4°C. Secondary antibody: Anti-Goat IgG DyLight™488 (Rabbit) Conjugated Preadsorbed (p/n 605-441-013) at 5 µg/ml for 2 hrs at RT. Localization: PDL1 is located in the cell membrane and cytoplasm. Staining: PDL1 as green fluorescent signal with DAPI (blue) nuclear counterstain.



Western Blot

Western Blot of Goat anti-PDL1 antibody. Lane 1: Molecular Weight. Lane 2: r PDL1 Recombinant protein. Load: 2µg per lane. Primary antibody: PDL1 antibody at 5 ug/mL for overnight at 4°C. Secondary antibody: Dky-a-Gt IgG HRP (p/n 605-703-125) and Rb-a-Gt IgG DL488 (p/n 605-441-013) at 1:40,000 for 45 min at RT. Block: 5% w/v BSA, 1X TBS, 0.1% Tween® 20 overnight at 4°C. Predicted/Observed size: ~33 kda for PDL1. Other band(s): none.



Western Blot

Western Blot of Goat anti-PDL-1 antibody. Lane 1: MW ladder opal pre-stained (p/n MB-210-0500). Lane 2: U-251 WCL (p/n W09-001-GY4). Lane 3: MDA-MB-231 WCL (p/n W09-001-GK6). Lane 4: Ms Heart lysate (p/n W10-000-T014). Lane 5: recombinant human PDL-1 protein. Lane 6: A549 WCL (p/n W09-001-372). Lane 7: A549 IFNy Stimulated WCL (p/n W09-001-GY5). Load: Lysates 10µg per lane, protein at 5.0ng per lane. Primary antibody: PDL-1 antibody at 1:1000 for overnight at 4°C. Secondary antibody: goat secondary HRP antibody (p/n 611-103-122) at 1:40,000 for 45 min at RT. Block: BlockOut (p/n MB-073) overnight at 4°C. Predicted/Observed size: 33 kDa for PDL-1.

Disclaimer

This product is for research use only and is not intended for therapeutic or diagnostic applications. Please contact a technical service representative for more information. All products of animal origin manufactured by Rockland Immunochemicals are derived from starting materials of North American origin. Collection was performed in United States Department of Agriculture (USDA) inspected facilities and all materials have been inspected and certified to be free of disease and suitable for exportation. All properties listed are typical characteristics and are not specifications. All suggestions and data are offered in good faith but without guarantee as conditions and methods of use of our products are beyond our control. All claims must be made within 30 days following the date of delivery. The prospective user must determine the suitability of our materials before adopting them on a commercial scale. Suggested uses of our products are not recommendations to use our products in violation of any patent or as a license under any patent of Rockland Immunochemicals, Inc. If you require a commercial license to use this material and do not have one, then return this material, unopened to: Rockland Inc., P.O. BOX 5199, Limerick, Pennsylvania, USA.