

Datasheet for 600-101-290**AP3D1 Antibody****Overview**

Description:	Anti-AP3D1 (GOAT) Antibody - 600-101-290
Item No.:	600-101-290
Size:	100 µg
Applications:	ELISA, WB
Reactivity:	Human
Host Species:	Goat

Product Details

Background:	AP3D1 (also known as Delta-adaptin 3, AP-3 complex delta subunit and Delta-adaptin) is a subunit of the AP3 adaptor-like complex, which is not associated with clathrin. The AP3D1 subunit is implicated in intracellular biogenesis and trafficking of pigment granules and possibly platelet dense granules and neurotransmitter vesicles.
Synonyms:	goat anti-AP3D1 antibody, AP-3 complex subunit delta-1, Adapter-related protein complex 3 subunit delta-1, AP-3 complex subunit delta, Delta-adaptin
Host Species:	Goat
Clonality:	Polyclonal
Format:	IgG

Target Details

Gene Name:	AP3D1
Reactivity:	Human
Immunogen Type:	Conjugated Peptide
Immunogen:	This affinity purified antibody was prepared from whole goat serum produced by repeated immunizations with a synthetic peptide corresponding to an internal region near aa 675-700 of Human AP3D1.

Purity/Specificity: This affinity purified antibody is directed against human AP3D1. The product was affinity purified from antiserum by immunoaffinity purification. A BLAST analysis was used to suggest reactivity with this protein from human, chimpanzee and chicken based on 100% homology for the immunogen sequence. Cross reactivity with AP3D1 protein from mouse, rat, dog and cow may occur as sequence homology varies by only one amino acid residue in this sequence as indicated by BLAST analysis. Reactivity with AP3D1 proteins from other sources is not known.

Relevant Links:

- [NCBI - 117553580](#)
- [UniProtKB - O14617](#)
- [GenelD - 8943](#)

Application Details

Tested Applications: ELISA, WB

Application Note: This affinity purified antibody has been tested for use in ELISA and by western blot. Specific conditions for reactivity should be optimized by the end user. Expect a band approximately 130 kDa in size corresponding to AP3D1 by western blotting in the appropriate cell lysate or extract. Multiple isoforms exist for this protein.

Assay Dilutions: All assays should be optimized by the user. Recommended dilutions (if any) may be listed below.

ELISA: 1:5,000 - 1:20,000

IP: 1:100

WB: 1:500 - 1:2,000

Formulation

Physical State: Liquid (sterile filtered)

Concentration: 1.6 mg/mL by UV absorbance at 280 nm

Buffer: 0.02 M Potassium Phosphate, 0.15 M Sodium Chloride, pH 7.2

Preservative: 0.01% (w/v) Sodium Azide

Stabilizer: None

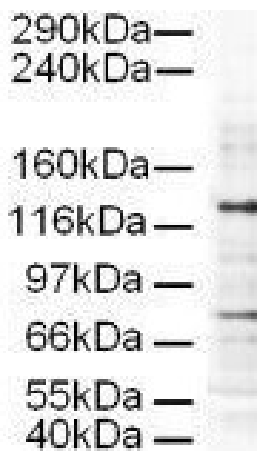
Shipping & Handling

Shipping Condition: Dry Ice

Storage Condition: Store vial at -20° C prior to opening. Aliquot contents and freeze at -20° C or below for extended storage. Avoid cycles of freezing and thawing. Centrifuge product if not completely clear after standing at room temperature. This product is stable for several weeks at 4° C as an undiluted liquid. Dilute only prior to immediate use.

Expiration: Expiration date is one (1) year from date of receipt.

Images



Western Blot

Western blot using Rockland's Affinity Purified anti-AP3D1 antibody shows detection of a 130-kDa band corresponding to Human AP3D1 in a HeLa whole cell lysate (p/n W09-000-364). The lower molecular weight band most likely represents non-specific binding. Approximately 20 µg of lysate was run on a SDS-PAGE and transferred onto nitrocellulose followed by reaction with a 1:500 dilution of anti-AP3D1 antibody. Detection occurred using a 1:5,000 dilution of HRP-labeled Rabbit anti-Goat IgG (p/n 605-4302) for 1 hour at room temperature. A chemiluminescence system was used for signal detection (Roche) using a 30-sec exposure time.

References

- Zheng L et al. Notch signaling from the endosome requires a conserved dileucine motif. *Mol Biol Cell.* (2013)

Disclaimer

This product is for research use only and is not intended for therapeutic or diagnostic applications. Please contact a technical service representative for more information. All products of animal origin manufactured by Rockland Immunochemicals are derived from starting materials of North American origin. Collection was performed in United States Department of Agriculture (USDA) inspected facilities and all materials have been inspected and certified to be free of disease and suitable for exportation. All properties listed are typical characteristics and are not specifications. All suggestions and data are offered in good faith but without guarantee as conditions and methods of use of our products are beyond our control. All claims must be made within 30 days following the date of delivery. The prospective user must determine the suitability of our materials before adopting them on a commercial scale. Suggested uses of our products are not recommendations to use our products in violation of any patent or as a license under any patent of Rockland Immunochemicals, Inc. If you require a commercial license to use this material and do not have one, then return this material, unopened to: Rockland Inc., P.O. BOX 5199, Limerick, Pennsylvania, USA.