

Datasheet for 600-101-287**AP2A Antibody****Overview**

Description:	Anti-AP2A (GOAT) Antibody - 600-101-287
Item No.:	600-101-287
Size:	100 µg
Applications:	ELISA, WB
Reactivity:	Human
Host Species:	Goat

Product Details

Background:	The AP2A1 and AP2A2 represent the AP2 alpha proteins that are found in the AP2 complex in clathrin-coated vesicles. AP2A is also known as Alpha-adaptin A, Adaptor protein complex AP-2 alpha-1 subunit, Clathrin assembly protein complex 2 alpha-A large chain, 100 kDa coated vesicle protein A and Plasma membrane adaptor HA2/AP2 adaptin alpha A subunit. The AP2 complex is a heterotetramer consisting of two large adaptins (alpha or beta), a medium adaptin (mu), and a small adaptin (sigma). The complex is part of the protein coat on the cytoplasmic face of coated vesicles, which link clathrin to receptors in vesicles.
Synonyms:	goat anti-AP2A Antibody, AP-2 complex subunit alpha-1, Adapter-related protein complex 2 alpha-1 subunit, Adaptor protein complex AP-2 subunit alpha-1 Alpha1-adaptin, Plasma membrane adaptor HA2/AP2, Clathrin assembly protein complex 2 alpha-A large chain, AP2A2, ADTAB, CLAPA2, HIP9, HYPJ, KIAA0899
Host Species:	Goat
Clonality:	Polyclonal
Format:	IgG

Target Details

Gene Name:	AP2A
Reactivity:	Human
Immunogen Type:	Conjugated Peptide

Immunogen:	This affinity purified antibody was prepared from whole goat serum produced by repeated immunizations with a synthetic peptide corresponding to the N-Terminal region near aa 1-25 of Human AP2A1 and AP2A2 proteins.
Purity/Specificity:	This affinity purified antibody is directed against human AP2A. The product was affinity purified from antiserum by immunoaffinity purification. A BLAST analysis was used to suggest reactivity with AP2A1 and AP2A2 protein from human, chimpanzee, orangutan, mouse, rat, chicken and dog based on 100% homology for the immunogen sequence. Cross reactivity with AP2A proteins from other sources is not known.
Relevant Links:	<ul style="list-style-type: none">• UniProtKB - O95782• NCBI - 27477041• GenelD - 161

Application Details

Tested Applications:	ELISA, WB
Application Note:	This affinity purified antibody has been tested for use in ELISA and by western blot. Specific conditions for reactivity should be optimized by the end user. Expect a band approximately 104-107 kDa in size corresponding to AP2A1 or AP2A2 proteins by western blotting in the appropriate cell lysate or extract. Multiple isoforms of each subunit exist for these proteins. The immunogen sequence is found in both AP2A1 and AP2A2. This antibody recognizes a band of approximately 100 kDa in multiple human cell lines and specific reactivity can be blocked with the immunizing peptide.
Assay Dilutions:	All assays should be optimized by the user. Recommended dilutions (if any) may be listed below.
ELISA:	1:5,000 - 1:20,000
IP:	1:100
WB:	1:500 - 1:2,000

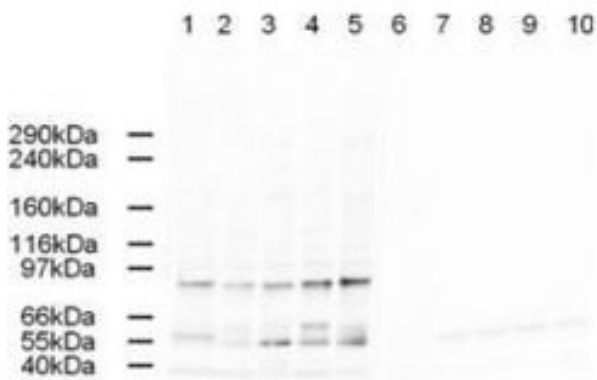
Formulation

Physical State:	Liquid (sterile filtered)
Concentration:	1.7 mg/mL by UV absorbance at 280 nm
Buffer:	0.02 M Potassium Phosphate, 0.15 M Sodium Chloride, pH 7.2
Preservative:	0.01% (w/v) Sodium Azide
Stabilizer:	None

Shipping & Handling

Shipping Condition:	Dry Ice
Storage Condition:	Store vial at -20° C prior to opening. Aliquot contents and freeze at -20° C or below for extended storage. Avoid cycles of freezing and thawing. Centrifuge product if not completely clear after standing at room temperature. This product is stable for several weeks at 4° C as an undiluted liquid. Dilute only prior to immediate use.
Expiration:	Expiration date is one (1) year from date of receipt.

Images



Western Blot

Western blot using Rockland's Affinity Purified anti-AP2A antibody shows detection of a band just below 100 kDa corresponding to Human AP2A1. Lane 1: HeLa nuclear extract (p/n W09-001-367), Lane 2: HeLa (p/n W09-000-364), Lane 3: 293 (W09-000-365), Lane 4: A431 (p/n W09-000-361), and Lane 5: Jurkat whole cell lysate (p/n W09-001-370). In lanes 6-10 the antibody was preincubated with 1 µg/ml of the immunizing peptide which effectively blocks the specific reactivity of this antibody with AP2A.

Approximately 20 µg of each lysate was run on a SDS-PAGE and transferred onto nitrocellulose followed by reaction with a 1:500 dilution of anti-AP2A antibody. Detection occurred using a 1:5,000 dilution of HRP-labeled Rabbit anti-Goat IgG (p/n 605-4302) for 1 hour at room temperature. A chemiluminescence system was used for signal detection (Roche) using a 60-sec exposure time.

Disclaimer

This product is for research use only and is not intended for therapeutic or diagnostic applications. Please contact a technical service representative for more information. All products of animal origin manufactured by Rockland Immunochemicals are derived from starting materials of North American origin. Collection was performed in United States Department of Agriculture (USDA) inspected facilities and all materials have been inspected and certified to be free of disease and suitable for exportation. All properties listed are typical characteristics and are not specifications. All suggestions and data are offered in good faith but without guarantee as conditions and methods of use of our products are beyond our control. All claims must be made within 30 days following the date of delivery. The prospective user must determine the suitability of our materials before adopting them on a commercial scale. Suggested uses of our products are not recommendations to use our products in violation of any patent or as a license under any patent of Rockland Immunochemicals, Inc. If you require a commercial license to use this material and do not have one, then return this material, unopened to: Rockland Inc., P.O. BOX 5199, Limerick, Pennsylvania, USA.