

Datasheet for 600-101-200**GST Antibody****Overview**

Description:	Anti-GST (GOAT) Antibody - 600-101-200
Item No.:	600-101-200
Size:	1 mg
Applications:	ELISA, WB, IP, Other
Reactivity:	GST-Tag
Host Species:	Goat

Product Details

Background: Rockland produces a wide range of GST antibodies in our laboratories. Select GST antibodies from several monoclonal and/or polyclonal GST antibodies listed below. Select appropriate GST antibodies for your research by isotype, epitope, applications and species reactivity. GST (Glutathione-S-Transferase) is a protein expression tag commonly used in molecular biology. Anti-GST will react with synthetic construct present in most known GST containing cloning or expression vectors. GST is responsible for the conjugation of reduced glutathione to a wide number of exogenous and endogenous hydrophobic electrophiles. The amino acid sequence GST is highly conserved in most organisms including mammals. GST exists as a 26 kDa homodimer.

Synonyms:	goat anti-GST antibody, Glutathione-S-Transferase
Host Species:	Goat
Clonality:	Polyclonal
Format:	IgG

Target Details

Reactivity:	GST-Tag
Immunogen Type:	Native Protein
Immunogen:	Glutathione-S-Transferase [Schistosoma japonicum]

Purity/Specificity: This product was prepared from monospecific antiserum by immunoaffinity chromatography using GST coupled to agarose beads followed by solid phase adsorption(s) to remove any unwanted reactivities and extensive dialysis against the buffer stated above. Assay by immunoelectrophoresis resulted in a single precipitin arc against anti-Goat Serum as well as purified and partially purified Glutathione-S-Transferase [*Schistosoma japonicum*]. Cross reactivity against Glutathione-S-Transferase from other sources may occur but has not been specifically determined.

Relevant Links:

- [600-101-200 SDS](#)
- [UniProtKB - P08515](#)

Application Details

Tested Applications: ELISA, WB

Suggested Applications: IP, Other (Based on references)

Application Note: Anti-GST has been tested by ELISA and western blot and is suitable for immunoblotting (western or dot blot), ELISA, immunoprecipitation and most immunological methods requiring high titer and specificity. This antibody has also been reported to be suitable for immobilization in Label-free Interaction Analysis (Biocore).

Assay Dilutions: All assays should be optimized by the user. Recommended dilutions (if any) may be listed below.

ELISA: 1:20,000 - 1:50,000

IHC: 1:1,000 - 1:10,000

IP: User Optimized

WB: 1:1,000 - 1:10,000

Formulation

Physical State: Liquid (sterile filtered)

Concentration: 1.20 mg/mL by UV absorbance at 280 nm

Buffer: 0.02 M Potassium Phosphate, 0.15 M Sodium Chloride, pH 7.2

Preservative: 0.01% (w/v) Sodium Azide

Stabilizer: None

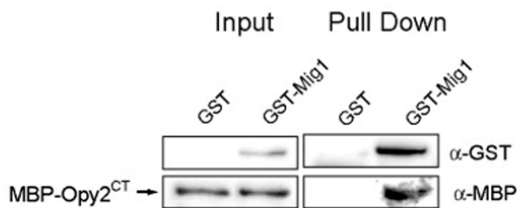
Shipping & Handling

Shipping Condition: Wet Ice

Storage Condition:	Store GST antibody at 4° C prior to opening. Centrifuge product if not completely clear after standing at room temperature. This product is stable for several weeks at 4° C as an undiluted liquid. Dilute only prior to immediate use. For extended storage aliquot contents and freeze at -20° C or below. Avoid cycles of freezing and thawing.
Expiration:	Expiration date is one (1) year from date of receipt.

Images

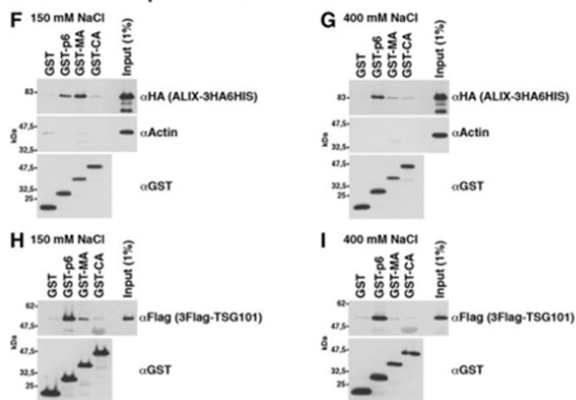
D



Western Blot

(D) Pull-down assay. GST (26 kDa) or GST-Mig1 (81.5 kDa) were purified (Input, anti-GST) and bound to glutathione-sepharose beads (Pull Down, anti-GST). Beads were incubated with purified MBP-Opy2CT (Input, anti-MBP, 69.4 kDa). Coprecipitated MBP-Opy2CT is shown (Pull Down, anti-MBP). Fig 3. PMID: 22904036

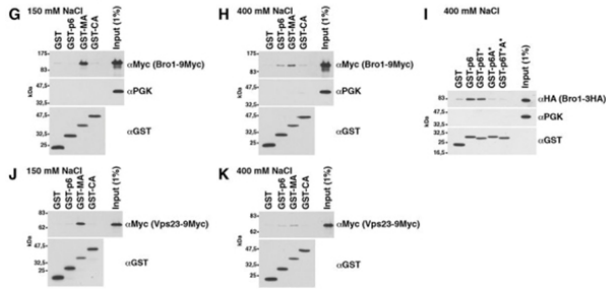
HEK293: GST-pulldowns



Western Blot

F–I, pulldown experiments showing that ALIX and TSG101 bind to GST-MA expressed in *E. coli*. The relative affinity for MA compared with p6 is higher for ALIX. GST-tagged Gag fragments (MA (aa 1–132), CA (aa 133–363), and p6 (aa 448–500)) were bound to GSH-Sepharose and incubated with extract of HEK293 cells expressing epitope-tagged ALIX or TSG101 from a CMV promoter vector. Bead-bound proteins were analyzed by immunoblotting with the indicated antibodies. α-Actin served as control, showing specific ESCRT protein binding. Fig 4. PMID: 32994219

Yeast: GST-pulldowns

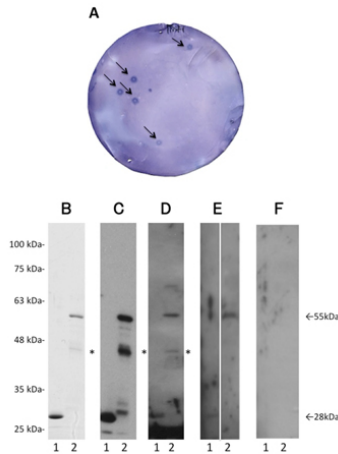


Western Blot

G–K, pulldown experiments showing that genomically epitope-tagged Bro1 and Vps23 bind to GST-MA expressed in *E. coli* and that Bro1 additionally binds to GST-p6 dependent on the ALIX-binding motif. GST-tagged Gag fragments (MA (aa 1–132), CA (aa 133–363), and p6 (aa 448–500)) were bound to GSH-Sepharose and incubated with yeast extract. Bead-bound proteins were analyzed by immunoblotting with the indicated antibodies. PGK served as control, showing specific ESCRT protein binding. G and J, binding buffer contained 150 mM NaCl. H, I, and K, binding buffer contained 400 mM NaCl. Fig 3. PMID: 32994219

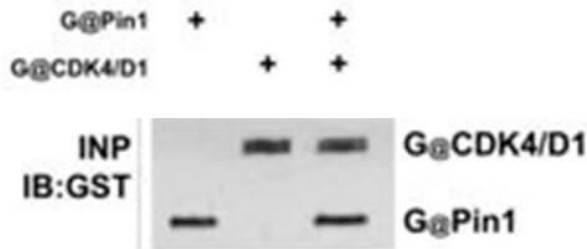
Western Blot

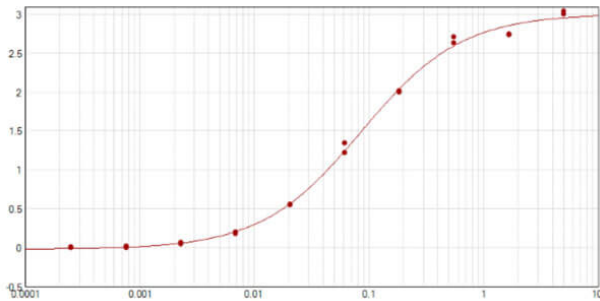
Recombinant proteins were blotted onto nitrocellulose membranes and reacted with patient serum. Arrows indicate positive phage clones. Positive clones were re-cloned for 2 additional times to obtain monoclonality A. GST protein (lane 1) and affinity-purified GST-tagged PDCD11 (lane 2) were separated on 11% SDS-polyacrylamide gels and stained with Coomassie Blue B., or western blotted using anti-GST antibody C., or the autologous sera of patients with aCI D., TIA E., and HD F. Asterisks indicate partially degraded proteins. Molecular weights are shown in the left. Fig 1. PMID: 29507658



Western Blot

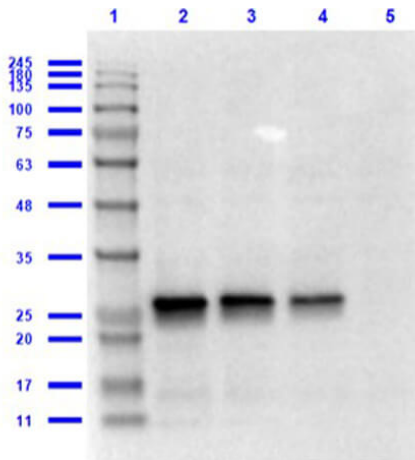
Immunoprecipitation of anti-GST antibody. Lane 1: T98G cells incubated with GST-Pin1. Lane 2: T98G cells incubated with GST-CDK4/cyclinD1. Lane 3: T98G cells incubated with GST-Pin1 and GST-CDK4/cyclinD1. Immunoprecipitated with pRb antibody. Load: 25 µg per lane. Primary antibody: anti-GST 1:400 for overnight at 4°C. Secondary antibody: IRDye800™ secondary antibody at 1:10,000 for 45 min at RT. Block: 5% BLOTTO overnight at 4°C.





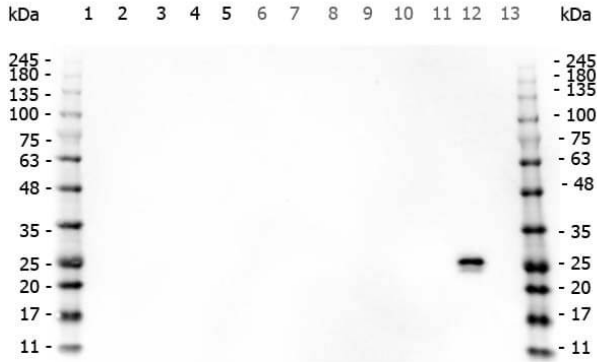
ELISA

ELISA results of purified Goat Anti-GST Antibody tested against GST. Each well was coated in 1.0 µg of antigen. The starting dilution of antibody was 5 µg/mL and the X-axis represents the Log10 of a 3-fold dilution. This titration is a 4-parameter curve fit where the IC50 is defined as the titer of the antibody. Assay performed using Buffer (p/n MB-060-1000), Substrate (p/n TMB-8000), and Donkey Anti-Goat IgG Antibody HRP (p/n 605-703-125) at 1:15,000.



Western Blot

Western Blot of Goat Anti-GST Antibody. Lane 1: Opal Pre-stained Molecular Weight Marker (p/n MB-210-0500). Lane 2: rec GST [0.1µg]/ HeLa Whole Cell Lysate [10µg]. Lane 3: rec GST [0.05µg]/ HeLa Whole Cell Lysate [10µg]. Lane 4: rec GST [0.02µg]/ HeLa Whole Cell Lysate [10µg]. Lane 5: HeLa Whole Cell Lysate (p/n W09-000-364) [10µg]. Primary Antibody: Goat anti-GST antibody (p/n 600-101-200) at 1.0µg/mL for overnight at 2-8°C. Secondary Antibody: Rabbit Anti-Goat IgG (H&L) Antibody Peroxidase Conjugated (p/n 605-4302) at 1:40,000 for 30 min at RT. Block: (p/n MB-070) at RT for 30 min. Predicted/Observed size: ~26kDa.



Western Blot

Western Blot of Goat anti-GST antibody. Marker: Opal Pre-stained ladder (p/n MB-210-0500). Lane 1: HEK293 lysate (p/n W09-000-365). Lane 2: HeLa Lysate (p/n W09-000-364). Lane 3: CHO/K1 Lysate (p/n W07-000-357). Lane 4: MDA-MB-231 (p/n W09-001-GK6). Lane 5: A431 Lysate (p/n W09-000-361). Lane 6: Jurkat Lysate (p/n W09-001-370). Lane 7: NIH/3T3 Lysate (p/n W10-000-358). Lane 8: E-coli HCP Control (p/n 000-001-J08). Lane 9: FLAG Positive Control Lysate (p/n W00-001-383). Lane 10: Red Fluorescent Protein (p/n 000-001-379). Lane 11: Green Fluorescent Protein (p/n 000-001-215). Lane 12: Glutathione-S-Transferase Protein (p/n 000-001-200). Lane 13: Maltose Binding Protein (p/n 000-001-385). Load: 10 µg of lysate or 50ng of purified protein per lane. Primary antibody: GST antibody at 1µg/mL overnight at 4C. Secondary antibody: Peroxidase goat secondary antibody (p/n 605-4302) at 1:30,000 for 60 min at RT. Blocking Buffer: 1% Casein-TTBS (p/n MB-082) for 30 min at RT. Predicted/Observed size: 26 kDa for GST.

References

- Arasawa T et al. Analysis of patients with colorectal cancer shows a specific increase in serum anti-ING1 autoantibody levels. *BMC Cancer*. (2023)
- Kubota M et al. Serum anti-TSTD2 antibody as a biomarker for atherosclerosis-induced ischemic stroke and chronic kidney disease. *Med Int (Lond)*. (2022)
- Lorenz, P et al. The KRAB Domain of ZNF10 Guides the Identification of Specific Amino Acids That Transform the Ancestral KRAB-A-Related Domain Present in Human PRDM9 into a Canonical Modern KRAB-A Domain. *International Journal of Molecular Sciences* (2022)
- Kubota, M et al. Serum anti-SERPINE1 antibody as a potential biomarker of acute cerebral infarction. *Scientific Reports* (2021)
- Koivunen, J et al. Integrin $\alpha 11\beta 1$ is a receptor for collagen XIII. *Cell and Tissue Research* (2021)
- Meusser B et al. HIV-1 Gag release from yeast reveals ESCRT interaction with the Gag N-terminal protein region. *J Biol Chem*. (2020)
- Licht et al. Inosine induces context-dependent recoding and translational stalling. *Nucleic Acids Research* (2019)
- Yoshida, Y et al. Elevation of autoantibody level against PDCD11 in patients with transient ischemic attack. *Oncotarget* (2018)
- Bolch, SN et al. A Splice Variant of Bardet-Biedl Syndrome 5 (BBS5) Protein that Is Selectively Expressed in Retina. *PLoS One* (2016)
- Pitoniak et al. Cdc42p-interacting protein Bem4p regulates the filamentous-growth mitogen-activated protein kinase pathway. *Molecular and Cellular Biology* (2015)
- Machida et al. Identification of stroke-associated-antigens via screening of recombinant proteins from the human expression cDNA library (SEREX). *Journal of Translational Medicine* (2015)
- Hang I et al. Analysis of site-specific N-glycan remodeling in the endoplasmic reticulum and the Golgi. *Glycobiology* (2015)
- Smith, TS et al. Light-dependent phosphorylation of Bardet-Biedl syndrome 5 in photoreceptor cells modulates its interaction with arrestin1. *Cellular and Molecular Life Sciences : Cmls* (2013)
- Rizzolio F et al. Retinoblastoma tumor-suppressor protein phosphorylation and inactivation depend on direct interaction with Pin1. *Cell Death Differ*. (2012)
- Karunanithi S et al. The Filamentous Growth MAPK Pathway Responds to Glucose Starvation Through the Mig1/2 Transcriptional Repressors in *Saccharomyces cerevisiae*. *Genetics*. (2012)

Disclaimer

This product is for research use only and is not intended for therapeutic or diagnostic applications. Please contact a technical service representative for more information. All products of animal origin manufactured by Rockland Immunochemicals are derived from starting materials of North American origin. Collection was performed in United States Department of Agriculture (USDA) inspected facilities and all materials have been inspected and certified to be free of disease and suitable for exportation. All properties listed are typical characteristics and are not specifications. All suggestions and data are offered in good faith but without guarantee as conditions and methods of use of our products are beyond our control. All claims must be made within 30 days following the date of delivery. The prospective user must determine the suitability of our materials before adopting them on a commercial scale. Suggested uses of our products are not recommendations to use our products in violation of any patent or as a license under any patent of Rockland Immunochemicals, Inc. If you require a commercial license to use this material and do not have one, then return this material, unopened to: Rockland Inc., P.O. BOX 5199, Limerick, Pennsylvania, USA.