

**Datasheet for 500-301-875****MTBP Antibody****Overview**

<b>Description:</b>	Anti-MTBP (Ascites) (MOUSE) Monoclonal Antibody - 500-301-875
<b>Item No.:</b>	500-301-875
<b>Size:</b>	100 µL
<b>Applications:</b>	ELISA, WB
<b>Reactivity:</b>	Human
<b>Host Species:</b>	Mouse

**Product Details**

<b>Background:</b>	The MDM2 onco-protein is over expressed in human cancer cells and it promotes tumorigenesis by directly blocking the function of the p53 tumor suppressor. Studies also indicate that MDM2 regulates cell proliferation via p53 independent mechanisms. MTBP (Mdm2 [Two] Binding Protein) was identified by a yeast two-hybrid screen as an MDM2 binding protein (1). MTBP has been reported to modulate cell cycle progression by a p53 independent mechanism and suppress MDM2-mediated p53 degradation when ectopically expressed in cells (1,2). The human MTBP gene localizes to 8q24 (3) and MTBP RNA is expressed in a wide range of tissues, with highest being in the thymus, testes and ovaries (1).
<b>Synonyms:</b>	mouse anti-MTBP antibody, mouse anti-mouse double minute 2 antibody, MDM 2 BP antibody, MDM2 (mouse double minute 2) binding protein 104kD antibody, MDM2 (mouse double minute 2) binding protein antibody, MDM2 Binding Protein antibody, MDM2 BP antibody
<b>Host Species:</b>	Mouse
<b>Clonality:</b>	Monoclonal
<b>Clone ID:</b>	PHL-1
<b>Format:</b>	ASCITES

**Target Details**

<b>Gene Name:</b>	MTBP
<b>Reactivity:</b>	Human
<b>Immunogen Type:</b>	Conjugated Peptide

<b>Immunogen:</b>	This monoclonal antibody was produced by repeated immunizations with a recombinant amino-terminal HIS <sub>6</sub> -tagged polypeptide corresponding to amino acid residues 667-812 of human MTBP protein.
<b>Purity/Specificity:</b>	This antibody is directed against human MTBP protein. The product was produced from clarified mouse ascetic fluid. A BLAST analysis was used to suggest reactivity with this protein from human (100% homology) and chimpanzee. Cross reactivity with MTBP protein from mouse (77% homology) and chicken (79% homology) is unlikely due to the relatively low number of positive residues and high number of gaps within this sequence. Cross reactivity with MTBP homologues from other sources has not been determined.
<b>Relevant Links:</b>	<ul style="list-style-type: none"><li>• <a href="#">UniProtKB - Q96DY7</a></li><li>• <a href="#">NCBI - NP_071328.2</a></li><li>• <a href="#">GeneID - 27085</a></li></ul>

## Application Details

<b>Tested Applications:</b>	ELISA, WB
<b>Application Note:</b>	This antibody has been tested for use in ELISA and western blot. Specific conditions for reactivity should be optimized by the end user. Expect a band ~ 110 kDa in size corresponding to MTBP by western blotting in the appropriate cell lysate or extract.
<b>Assay Dilutions:</b>	All assays should be optimized by the user. Recommended dilutions (if any) may be listed below.
<b>ELISA:</b>	1:2,000 - 1:20,000
<b>WB:</b>	1:200 - 1:2,000

## Formulation

<b>Physical State:</b>	Liquid (sterile filtered)
<b>Concentration:</b>	Neat
<b>Buffer:</b>	0.02 M Potassium Phosphate, 0.15 M Sodium Chloride, pH 7.2
<b>Preservative:</b>	0.01% (w/v) Sodium Azide
<b>Stabilizer:</b>	None

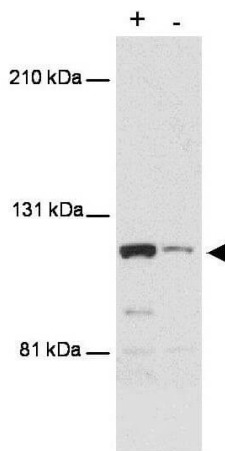
## Shipping & Handling

<b>Shipping Condition:</b>	Dry Ice
----------------------------	---------

**Storage Condition:** Store vial at -20° C prior to opening. Aliquot contents and freeze at -20° C or below for extended storage. Avoid cycles of freezing and thawing. Centrifuge product if not completely clear after standing at room temperature. This product is stable for several weeks at 4° C as an undiluted liquid. Dilute only prior to immediate use.

**Expiration:** Expiration date is one (1) year from date of receipt.

## Images



### Western Blot

Western blot using Rockland's anti-MTBP antibody shows detection of a band ~110 kDa corresponding to human MTBP (arrowhead). Lanes represent human 293 cell lysates with (+) and without (-) transfection with a full-length human expression MTBP construct. The transfected cell extract was diluted 30 fold in extract lacking transfected MTBP. Proteins were separated by SDS-PAGE and transferred onto PDVF membrane. After blocking, the membrane was probed with the primary antibody diluted to 1:500 for 2h at room temperature followed by detection using a Lumi-LightPlus Western Blotting Kit (Roche).

## Disclaimer

This product is for research use only and is not intended for therapeutic or diagnostic applications. Please contact a technical service representative for more information. All products of animal origin manufactured by Rockland Immunochemicals are derived from starting materials of North American origin. Collection was performed in United States Department of Agriculture (USDA) inspected facilities and all materials have been inspected and certified to be free of disease and suitable for exportation. All properties listed are typical characteristics and are not specifications. All suggestions and data are offered in good faith but without guarantee as conditions and methods of use of our products are beyond our control. All claims must be made within 30 days following the date of delivery. The prospective user must determine the suitability of our materials before adopting them on a commercial scale. Suggested uses of our products are not recommendations to use our products in violation of any patent or as a license under any patent of Rockland Immunochemicals, Inc. If you require a commercial license to use this material and do not have one, then return this material, unopened to: Rockland Inc., P.O. BOX 5199, Limerick, Pennsylvania, USA.