

Datasheet for 210-401-320S**Leptin Antibody****Overview**

Description:	Anti-Leptin (RABBIT) Antibody - 210-401-320S
Item No.:	210-401-320S
Size:	25 µL
Applications:	ELISA, WB
Reactivity:	Human, Mouse
Host Species:	Rabbit

Product Details

Background:	Anti-Leptin antibody detects leptin protein. Leptin may function as part of a signaling pathway that acts to regulate the size of the body fat depot. An increase in the level of LEP may act directly or indirectly on the CNS to inhibit food intake and/or regulate energy expenditure as part of a homeostatic mechanism to maintain constancy of the adipose mass. Obesity associated leptin is the product of the OB gene and has been identified with Type II diabetes. Anti-leptin Antibody is ideal for investigators involved in Cell Signaling, Obesity research, aging research and Signal Transduction research.
Synonyms:	rabbit anti-leptin antibody, LEP antibody, Leptin Murine Obesity Homolog antibody, Leptin Precursor Obesity Factor antibody, OB antibody, Obese Protein antibody
Host Species:	Rabbit
Clonality:	Polyclonal
Format:	IgG

Target Details

Gene Name:	Lep
Reactivity:	Human, Mouse
Immunogen Type:	Recombinant Protein
Immunogen:	Anti-Leptin antibody was prepared by repeated immunizations with recombinant mouse leptin 16,000 MW produced in E. coli.

Purity/Specificity: Anti-Leptin antibody is an IgG fraction antibody purified from monospecific antiserum by a multi-step process which includes delipidation, salt fractionation and ion exchange chromatography followed by extensive dialysis against the buffer stated above. The antibody will recognize leptin from mouse and human. Reactivity with leptin from other sources is unknown.

Relevant Links:

- [NCBI - P41160.1](#)
- [UniProtKB - P41160](#)
- [GeneID - 16846](#)

Application Details

Tested Applications: ELISA, WB

Application Note: This IgG fraction of anti-Mouse Leptin was tested for use in ELISA and immunoblotting. Reactivity in other immunoassays is unknown. The antibody will recognize recombinant and native 16 kDa leptin from mouse and human.

Assay Dilutions: All assays should be optimized by the user. Recommended dilutions (if any) may be listed below.

ELISA: 1:5,000 - 1:20,000

IHC: User Optimized

WB: 1:500 - 1:2,000

Formulation

Physical State: Liquid (sterile filtered)

Concentration: 1.0 mg/mL by UV absorbance at 280 nm

Buffer: 0.02 M Potassium Phosphate, 0.15 M Sodium Chloride, pH 7.2

Preservative: 0.01% (w/v) Sodium Azide

Stabilizer: None

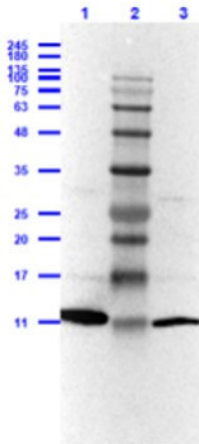
Shipping & Handling

Shipping Condition: Dry Ice

Storage Condition: Store vial at -20° C or below prior to opening. This vial contains a relatively low volume of reagent (25 µL). To minimize loss of volume dilute 1:10 by adding 225 µL of the buffer stated above directly to the vial. Recap, mix thoroughly and briefly centrifuge to collect the volume at the bottom of the vial. Use this intermediate dilution when calculating final dilutions as recommended below. Store the vial at -20°C or below after dilution. Avoid cycles of freezing and thawing.

Expiration: Expiration date is one (1) year from date of receipt.

Images



Western Blot

Western Blot Results of Rabbit Anti-Leptin Antibody.

Lane 1: Rec Ms Leptin Reduced [0.03µg].

Lane 2: Opal Prestained Molecular Weight Marker (p/n MB-210-0500).

Lane 3: Rec Ms Leptin Non-Reduced [0.03µg].

Primary Antibody: Rb Anti-Leptin at 1:1000 overnight at 2-8°C.

Secondary Antibody: Gt Anti-Rabbit IgG [H&L] HRP (p/n 611-1302) at 1:40,000 for 30 mins at RT.

Blocking: Universal BlockOut Buffer (p/n MB-073) for 1hr at RT.

Predicted MW: ~16kDa.

Exposure: 5sec.

Disclaimer

This product is for research use only and is not intended for therapeutic or diagnostic applications. Please contact a technical service representative for more information. All products of animal origin manufactured by Rockland Immunochemicals are derived from starting materials of North American origin. Collection was performed in United States Department of Agriculture (USDA) inspected facilities and all materials have been inspected and certified to be free of disease and suitable for exportation. All properties listed are typical characteristics and are not specifications. All suggestions and data are offered in good faith but without guarantee as conditions and methods of use of our products are beyond our control. All claims must be made within 30 days following the date of delivery. The prospective user must determine the suitability of our materials before adopting them on a commercial scale. Suggested uses of our products are not recommendations to use our products in violation of any patent or as a license under any patent of Rockland Immunochemicals, Inc. If you require a commercial license to use this material and do not have one, then return this material, unopened to: Rockland Inc., P.O. BOX 5199, Limerick, Pennsylvania, USA.