

Datasheet for 209-406-B95

IL-2 Antibody Biotin Conjugated

Overview

Description:	Anti-Human IL-2 (RABBIT) Antibody Biotin Conjugated - 209-406-B95
Item No.:	209-406-B95
Size:	100 µg
Applications:	WB
Reactivity:	Human
Host Species:	Rabbit

Product Details

Background:	IL-2 is a secreted cytokine that is important for the proliferation of T and B lymphocytes. The receptor of this cytokine is a heterotrimeric protein complex whose gamma chain is also shared by interleukin 4 (IL4) and interleukin 7 (IL7). The expression of this gene in mature thymocytes is monoallelic, which represents an unusual regulatory mode for controlling the precise expression of a single gene. The targeted disruption of a similar gene in mice leads to ulcerative colitis-like disease, which suggests an essential role of this gene in the immune response to antigenic stimuli.
Synonyms:	rabbit anti-IL-2 biotin conjugated Antibody, rabbit anti-Interleukin-2 biotin conjugated antibody, IL-2, IL2, T-cell growth factor, TCGF, Aldesleukin, Lymphokine
Host Species:	Rabbit
Conjugate:	Biotin
Clonality:	Polyclonal
Format:	IgG

Target Details

Gene Name:	IL2
Reactivity:	Human
Immunogen Type:	Recombinant Protein

Immunogen:	This purified antibody was prepared from whole rabbit serum produced by repeated immunizations with full length recombinant human IL-2 protein.
Purity/Specificity:	This product is an IgG fraction antibody purified from monospecific antiserum by a multi-step process which includes delipidation, salt fractionation and ion exchange chromatography followed by extensive dialysis against the buffer stated above. This purified antibody has been heated to 56°C for 30 minutes. In ELISA and other immunoreactive assays, this antibody will recognize both native and recombinant human IL-2 in cell supernatants and certain body fluids. A control of similarly diluted normal rabbit IgG is recommended.
Relevant Links:	<ul style="list-style-type: none">• NCBI - NP_000577.2• UniProtKB - P60568• GenelD - 3558

Application Details

Tested Applications:	WB
Application Note:	This purified antibody has been tested in western blotting and suitable in ELISA. By western blot a band approximately 15 kDa in size corresponding to human IL-2 protein is expected in the appropriate cell lysate or extract. Specific conditions for reactivity should be optimized by the end user.
Assay Dilutions:	All assays should be optimized by the user. Recommended dilutions (if any) may be listed below.
ELISA:	1:20,000-1:100,000
IHC:	1:1,000-1:5,000
WB:	1:2,000-1:10,000

Formulation

Physical State:	Lyophilized
Concentration:	1.1 mg/ml by UV absorbance at 280 nm
Buffer:	0.02 M Potassium Phosphate, 0.15 M Sodium Chloride, pH 7.2
Preservative:	0.01% (w/v) Sodium Azide
Stabilizer:	10 mg/mL Bovine Serum Albumin (BSA) - Immunoglobulin and Protease free
Reconstitution Volume:	100 µL
Reconstitution Buffer:	Restore with deionized water (or equivalent)

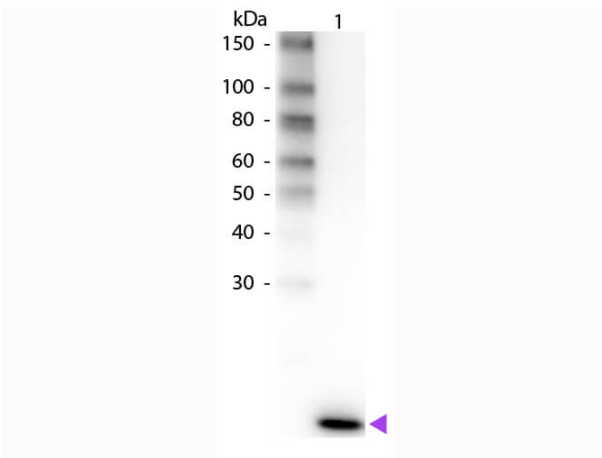
Shipping & Handling

Shipping Condition: Ambient

Storage Condition: Store vial at 4° C prior to restoration. For extended storage aliquot contents and freeze at -20° C or below. Avoid cycles of freezing and thawing. Centrifuge product if not completely clear after standing at room temperature. This product is stable for several weeks at 4° C as an undiluted liquid. Dilute only prior to immediate use.

Expiration: Expiration date is one (1) year from date of receipt.

Images



Western Blot

Western Blot of Rabbit anti-Human IL-2 Biotin Conjugated Antibody. Lane 1: Human IL-2. Lane 2: None. Load: 50 ng per lane. Primary antibody: Biotin Human IL-2 primary antibody at 1:1,000 overnight at 4°C. Secondary antibody: Peroxidase streptavidin secondary antibody at 1:40,000 for 30 min at RT. Block: MB-070 for 30 min at RT. Predicted/Observed size: 16 kDa, 16 kDa for Human IL-2. Other band(s): None.

Disclaimer

This product is for research use only and is not intended for therapeutic or diagnostic applications. Please contact a technical service representative for more information. All products of animal origin manufactured by Rockland Immunochemicals are derived from starting materials of North American origin. Collection was performed in United States Department of Agriculture (USDA) inspected facilities and all materials have been inspected and certified to be free of disease and suitable for exportation. All properties listed are typical characteristics and are not specifications. All suggestions and data are offered in good faith but without guarantee as conditions and methods of use of our products are beyond our control. All claims must be made within 30 days following the date of delivery. The prospective user must determine the suitability of our materials before adopting them on a commercial scale. Suggested uses of our products are not recommendations to use our products in violation of any patent or as a license under any patent of Rockland Immunochemicals, Inc. If you require a commercial license to use this material and do not have one, then return this material, unopened to: Rockland Inc., P.O. BOX 5199, Limerick, Pennsylvania, USA.